



TUSCULUM COLLEGE

Fact Book
2011 - 2012

Tusculum College

Fact Book

College Statistics 2011-12

Enrollment History

Ten Year Fall Enrollment History.....	1
Traditional College Enrollment History.....	1
Official 2011-12 Fall Enrollment.....	1
Ethnicity and Gender.....	2
Enrollment by Student Status (Traditional College).....	3

2011-12 Geographical Distribution

Traditional Student by State & Foreign Country.....	4
Traditional Student by Tennessee County.....	5
Professional Studies Student by County.....	6

Class Size

Traditional College.....	7
Graduate and Professional Studies.....	7

Tuition

Graduate and Professional Studies.....	8
Traditional College.....	8

Graduation Rates

Cohort Graduation Rates.....	9
------------------------------	---

Freshman Rates

First-Time Freshman Count.....	10
Freshman Return Rate.....	10

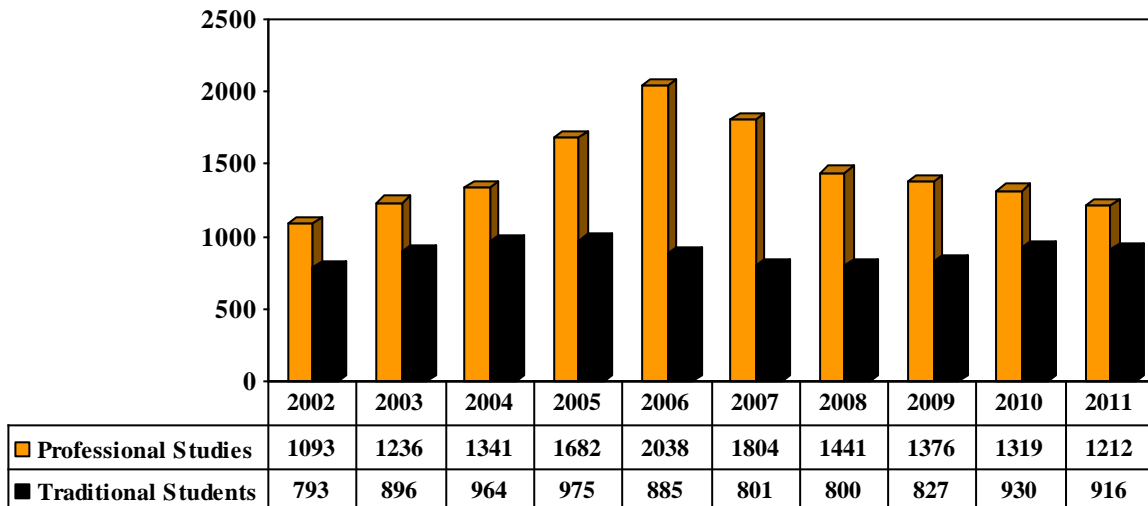
SAT / ACT Trends of Traditional College Entering Class

SAT Trends.....	11
ACT Trends.....	11

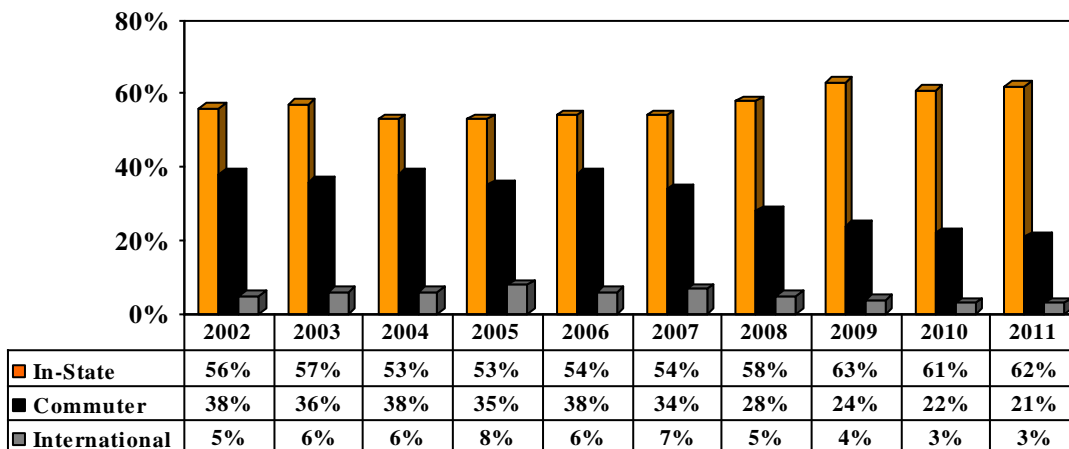
Tusculum Programs of Study.....	Back Cover
---------------------------------	------------

Enrollment History

Ten Year Fall Enrollment History



Traditional College Enrollment History



Official 2011-12 Fall Enrollment

	Headcount	FTE	PT	FT
Overall	2128	2079	74	2054
RC	916	915	2	914
PS	1212	1164	72	1140
Graduate	213	212	1	212
Undergraduate	1915	1866	73	1842

Enrollment History

Ethnicity and Gender

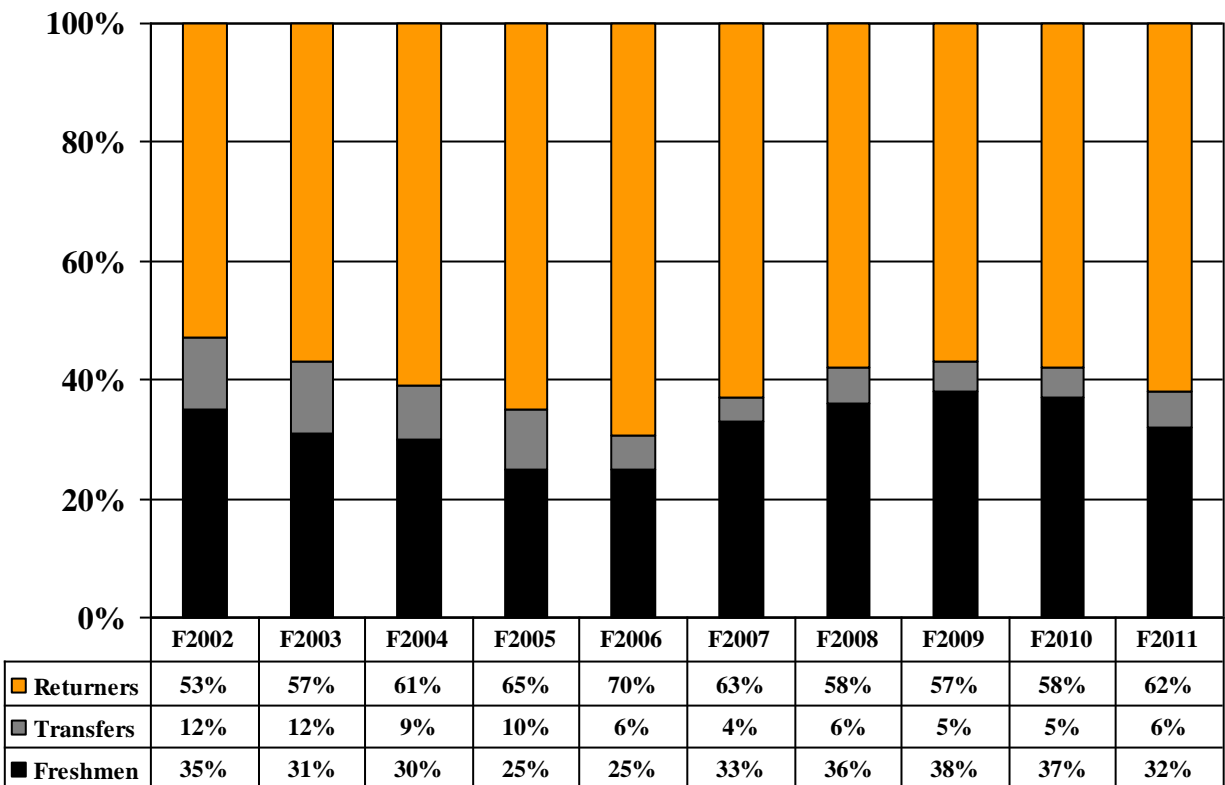
Graduate & Professional Studies	2008-09	2009-10	2010-11	2011-12
Total Enrollment	1441	1376	1319	1212
Percent Male	28.5	30.1	29.8	30.5
Percent Female	71.5	69.9	70.3	69.5
Percent Caucasian	92.0	91.1	90.3	89.5
Percent Black	5.6	5.7	5.6	5.8
Percent Other Minority and Unknown	2.4	3.2	4.1	4.7

Traditional College	2008-09	2009-10	2010-11	2011-12
Total Enrollment	800	827	930	916
Percent Male	52.6	51.8	52.4	52.3
Percent Female	47.4	48.1	47.6	47.7
Percent Caucasian	71.3	73.5	73.8	71.2
Percent Black	19.3	17.4	18.3	19.8
Percent Other Minority and Unknown	4.7	5.1	4.7	5.7
Percent NR Alien (International)	4.7	4.0	3.2	3.3

Enrollment History

Freshmen, Transfers, Returning Students

Traditional College



2011-12 Geographical Distribution

Traditional College 30 States and 15 Foreign Countries

State	Female	Male	Total	Percent of Total Traditional Enrollment
Tennessee	319	245	564	61.6
Georgia	18	68	86	9.4
South Carolina	12	36	48	5.2
Virginia	21	15	36	3.9
Florida	4	24	28	3.1
North Carolina	11	14	25	2.7
Ohio	3	9	12	1.3
Kentucky	6	5	11	1.2
Alabama	4	4	8	0.9
California	1	6	7	0.8
Indiana	4	3	7	0.8
Illinois	3	3	6	0.7
Michigan	3	3	6	0.7
New Jersey	4	1	5	0.5
Pennsylvania	3	2	5	0.5
Texas	2	3	5	0.5
Wisconsin	5		5	0.5
Massachusetts	1	3	4	0.4
New York	1	3	4	0.4
Connecticut	1	1	2	0.2
Maryland		2	2	0.2
Utah	1	1	2	0.2
Arizona		1	1	0.1
Colorado		1	1	0.1
District of Columbia	1		1	0.1
Louisiana		1	1	0.1
Mississippi		1	1	0.1
New Hampshire	1		1	0.1
Nevada		1	1	0.1
West Virginia		1	1	0.1
	Foreign Students			Percent of Total Foreign Enrollment
Canada	7		7	23.3
Sweden		4	4	13.3
Denmark	1	2	3	10.0
Guatemala		3	3	10.0
Norway		2	2	6.7
Australia		1	1	3.3
Brazil		1	1	3.3
Chile		1	1	3.3
Dominican Republic		1	1	3.3
Ireland		1	1	3.3
N. Ireland		1	1	3.3
Taiwan		1	1	3.3
United Kingdom		2	2	6.7
Ukraine		1	1	3.3
Venezuela		1	1	3.3

2011-12 Geographical Distribution

Traditional College 62 Tennessee Counties

Tennessee County	Female	Male	Total	Percent of TN Students
Greene	72	50	122	21.6
Knox	21	25	46	8.2
Washington	19	16	35	6.2
Hawkins	24	7	31	5.5
Hamilton	21	9	30	5.3
Sullivan	21	7	28	5.0
Sevier	14	10	24	4.3
Hamblen	10	11	21	3.7
Cocke	14	6	20	3.5
Davidson	8	11	19	3.4
Jefferson	8	3	11	2.0
Rutherford	7	4	11	2.0
Blount	5	5	10	1.8
Carter	6	3	9	1.6
Shelby	4	5	9	1.6
Rhea	3	5	8	1.4
Roane	5	3	8	1.4
Sumner	3	5	8	1.4
Williamson	5	3	8	1.4
Grainger	4	3	7	1.2
Anderson	2	4	6	1.1
Mcminn	3	3	6	1.1
Monroe	4	2	6	1.1
Unicoi	3	3	6	1.1
Claiborne	2	3	5	0.9
Cumberland	1	4	5	0.9
Marion	4	1	5	0.9
Robertson	1	3	4	0.7
Union	2	2	4	0.7
Campbell	1	2	3	0.5
Cheatham	2	1	3	0.5
Johnson	2	1	3	0.5
Bradley	2		2	0.4
Dekalb		2	2	0.4
Dickson	1	1	2	0.4
Grundy	1	1	2	0.4
Hancock	2		2	0.4
Humphreys	1	1	2	0.4
Lawrence	1	1	2	0.4
Lincoln		2	2	0.4
Loudon	1	1	2	0.4
Maury	1	1	2	0.4
Montgomery		2	2	0.4
Perry		2	2	0.4
Scott		2	2	0.4
Bedford		1	1	0.2
Cerro Gord		1	1	0.2
Christian		1	1	0.2
Coffee		1	1	0.2
Giles	1		1	0.2
Hardin		1	1	0.2
Haywood	1		1	0.2
Henry	1		1	0.2
Hickman		1	1	0.2
Lewis	1		1	0.2
Macon		1	1	0.2
Madison	1		1	0.2
Stewart	1		1	0.2
Warren	1		1	0.2
Weakley	1		1	0.2
White		1	1	0.2
Wilson		1	1	0.2

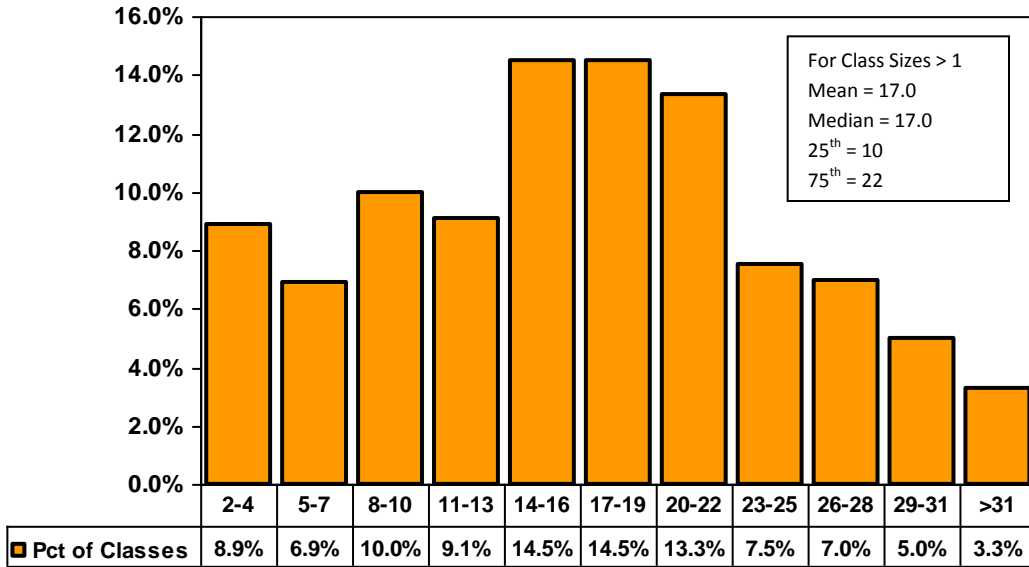
2011-12 Geographical Distribution

Graduate & Professional Studies – Tennessee Counties

<u>County</u>	<u>Female</u>	<u>Male</u>	<u>Total</u>	<u>Percent of TN Enrollment</u>
Knox	204	136	340	28.7
Greene	101	35	136	11.5
Hamblen	92	31	123	10.4
Blount	52	35	87	7.3
Washington	51	16	67	5.6
Cocke	45	12	57	4.8
Jefferson	39	14	53	4.5
Anderson	37	11	48	4.0
Hawkins	25	15	40	3.4
Sevier	35	5	40	3.4
Grainger	31	7	38	3.2
Loudon	20	9	29	2.4
Sullivan	19	8	27	2.3
Roane	11	11	22	1.9
Claiborne	15	1	16	1.3
Hancock	11	1	12	1.0
Campbell	7	2	9	0.8
Monroe	7	2	9	0.8
Carter	7	1	8	0.7
Mcminn	3	4	7	0.6
Scott	2	3	5	0.4
Morgan	1	2	3	0.3
Unicoi	1	2	3	0.3
Union	1	1	2	0.2
Bradley	1		1	0.1
Cumberland	1		1	0.1
Haywood		1	1	0.1
Johnson		1	1	0.1
Total	820	366	1186	

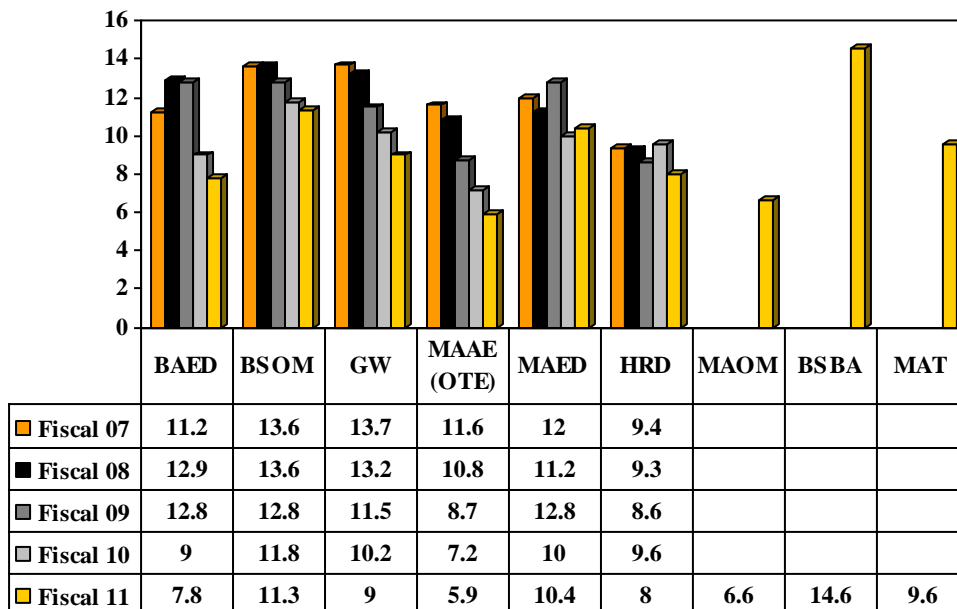
Class Sizes 2010-11

Traditional College



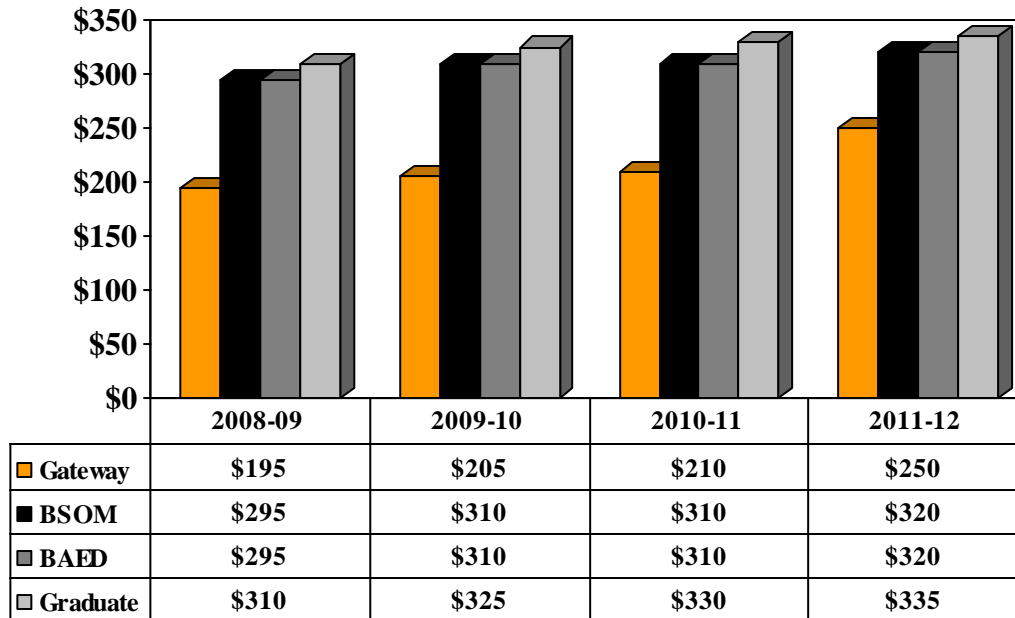
Graduate & Professional Studies

(Class Size >2)

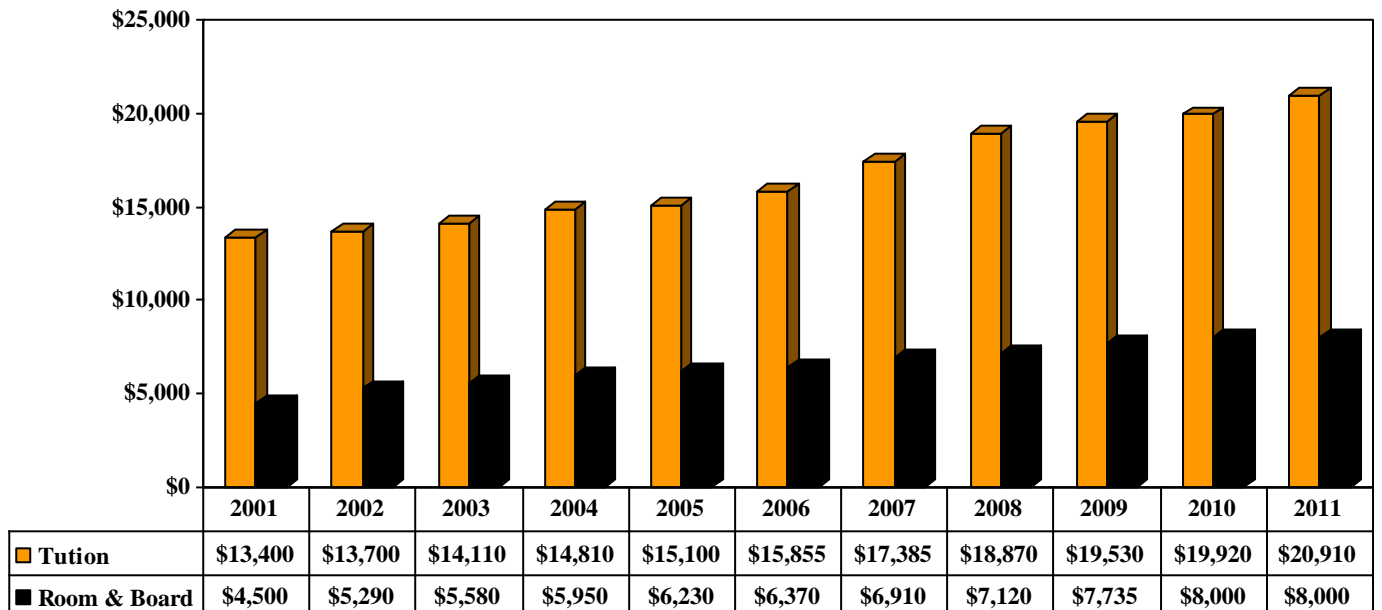


Tuition

Graduate & Professional Studies Cost per Semester Hour

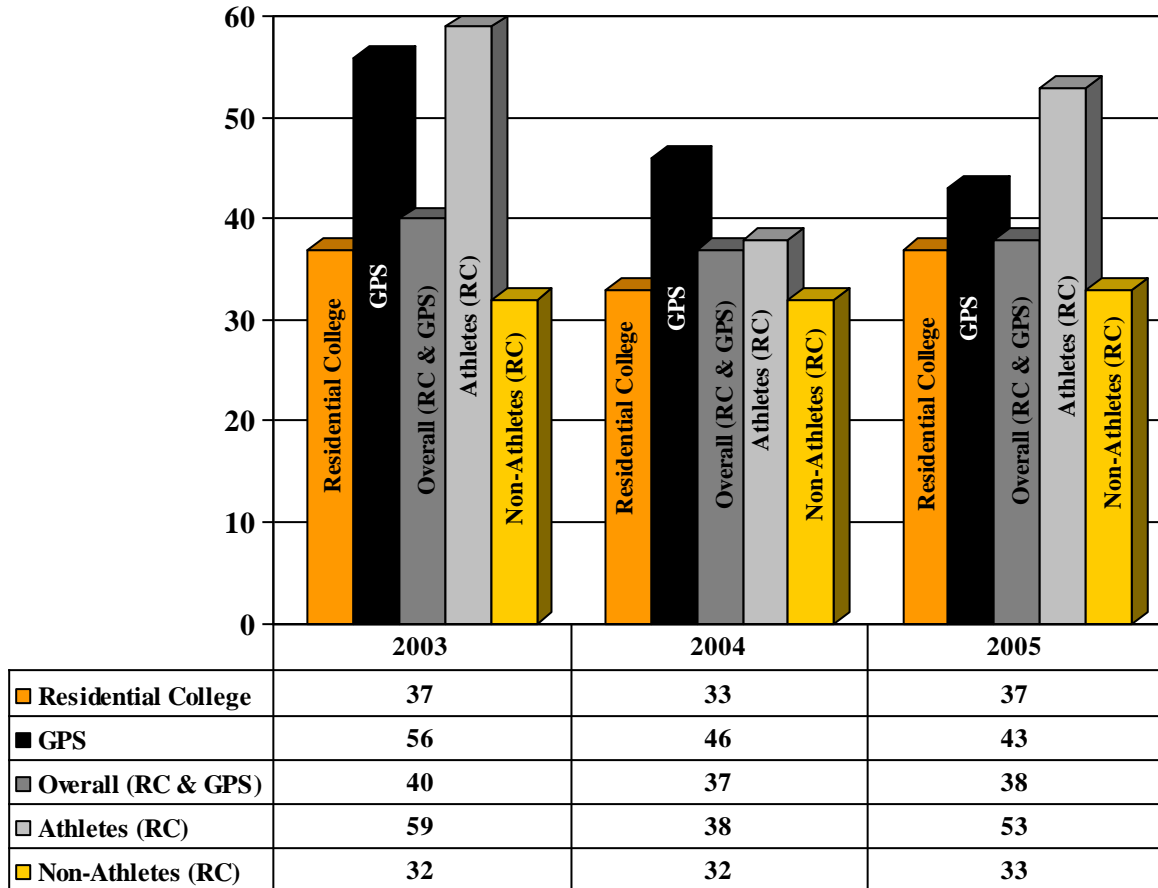


Traditional College Tuition, Room & Board



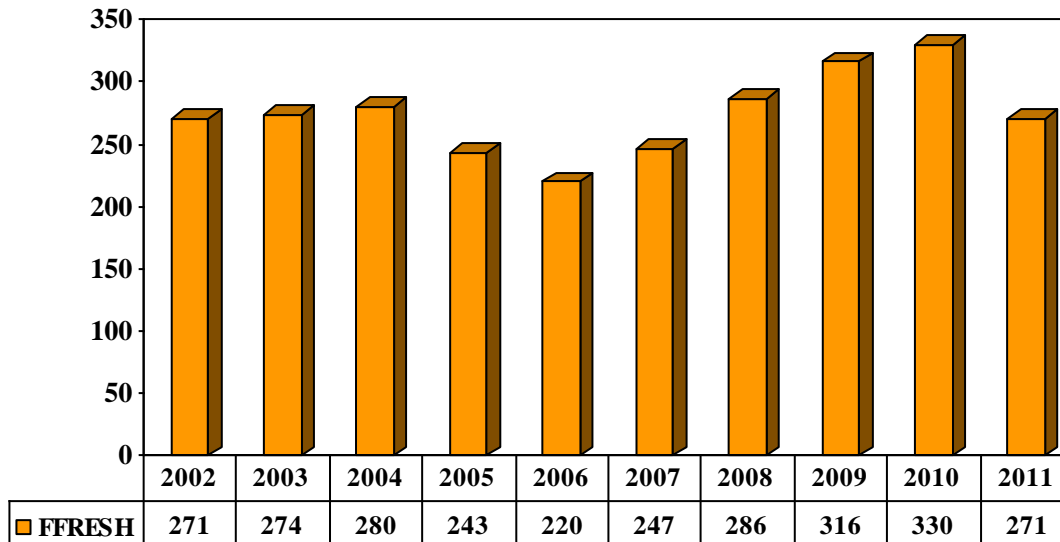
6-Year Graduation Rates

Cohort Graduation Rates (Percent of Cohort Graduated)



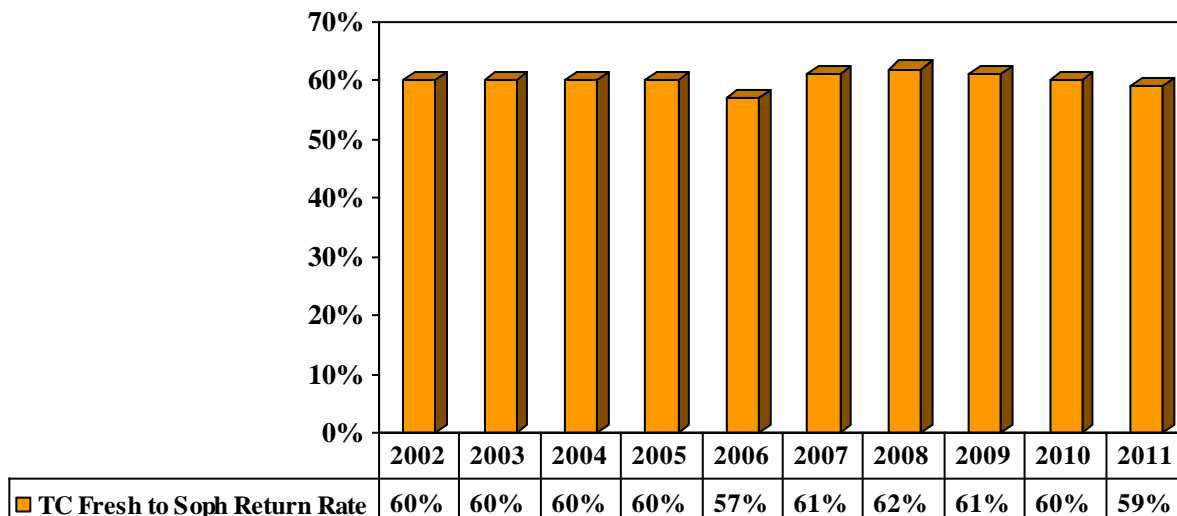
Freshman Rates

Traditional College Fall First-Time Freshmen by Cohort Year*



*First-time Freshman defines the student who has never attended another college prior to attending Tusculum College.

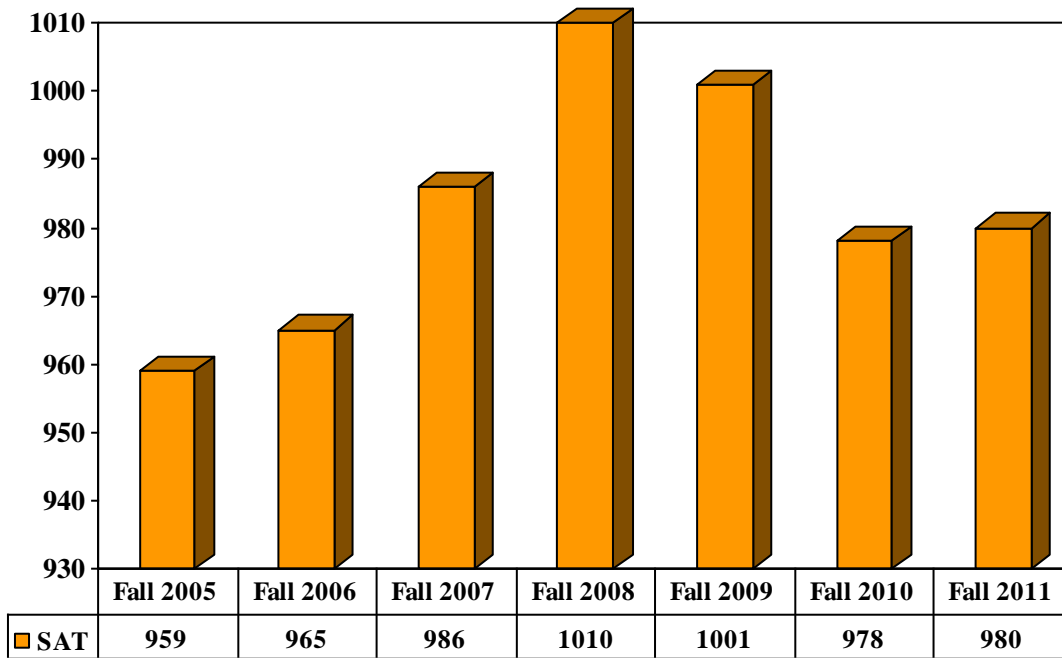
Cohort Return Rate x Cohort Year Fall Freshmen Returning For Sophomore Year**



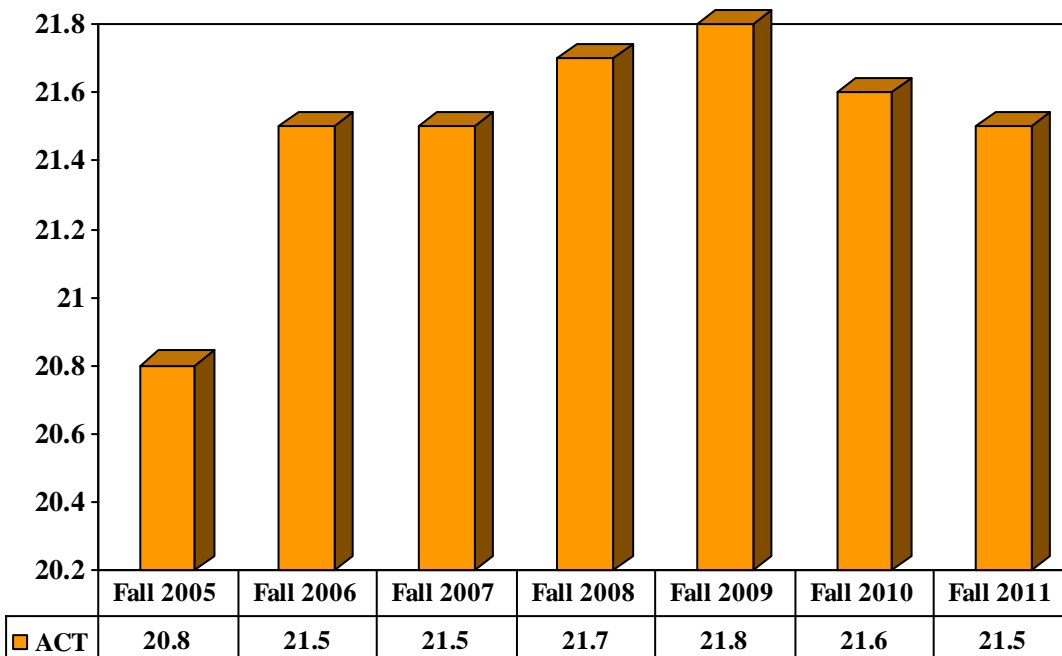
**Combined GPS and Traditional College First-time Full-time Freshman cohort, as reported to IPEDS.

SAT / ACT Trends of Traditional College Entering Class

SAT Trends



ACT Trends



Tusculum College Programs of Study 2011-12

Bachelor of Arts Majors (and Concentrations)

Art & Design	Environmental Science
a. Graphic Design	Field Guide/Naturalist
b. Studio Art	Digital Media
Athletic Training	Health and Wellness
a. Pre-Physical Therapy	History
Biology	Human Growth and Learning
a. Medical Pre-Professional	Mathematics
b. Pre-Pharmacy	a. Math/Computer Science
c. Medical Technology	Museum Studies
Business Administration	Physical Education
a. Economics and International Business	Political Science
b. General Management	Psychology
c. Information Technology	Sport Management
d. Management Accounting	Sports Science
English	
a. Creative Writing	
b. Journalism and Professional Writing	
c. Literature	

Tusculum College offers five categories of teacher licensure programs:

1. Pre-Secondary Education

Early Childhood Education PreK-3
Elementary Education K-6
Middle Grades Education 4-8

2. Secondary Education

Biology 7-12
Business 7-12
English 7-12
Government 7-12
History 7-12
Mathematics 7-12
Psychology 9-12

3. K-12 Education

Health & Wellness K-12
Physical Education K-12
Visual Arts K-12

4. Special Education

Special Education Early Childhood Pre K-3
Special Education Modified and Comprehensive K-12

Minors

Biology, Chemistry, Civic Engagement, Coaching, Computer Science, Creative Writing, Economics, Environmental Science, Digital Media, History, International Business, Journalism, Literature, Management, Mathematics, Museum Studies, Political Science, Psychology, Religious Studies, Theatre, Visual Arts and the following minors in Education: English, History, Early Childhood Education, Elementary Education, Human Growth and Learning – Early Childhood Education – Pre K 4 or Pre K 3, Human Growth and Learning – Early Education, K – 6, Mathematics, and Special Education Modified & Comprehensive.

Other Disciplines

Tusculum College also offers additional courses in the following disciplines: Geography, Geology, Humanities, Music, Physics, Sociology, and Spanish.

Graduate and Professional Studies Programs for Adult Students

Gateway Program

Bachelor of Science in Organizational Management

Bachelor of Science in Business Administration

(Add-On Concentrations available for the Bachelor of Science in Organizational Management and in Business Administration are Applied Information Technology, Financial Management, Human Resource Management and Marketing)

Bachelor of Arts in Education/Human Growth and Learning – K-6

Master of Arts in Education: Curriculum and Instruction, Organizational Training and Education,
& Human Resource Development

Master of Arts in Teaching