



TUSCULUM COLLEGE

Fact Book
2010 – 2011

Tusculum College

Fact Book

College Statistics 2010-11

Enrollment History

Ten Year Fall Enrollment History.....	1
Traditional College Enrollment History.....	1
Official 2010-11 Fall Enrollment.....	1
Ethnicity and Gender.....	2
Enrollment by Student Status (Traditional College).....	3

2010-11 Geographical Distribution

Traditional Student by State & Foreign Country.....	4
Traditional Student by Tennessee County.....	5
Professional Studies Student by County.....	6

Class Size

Traditional College.....	7
Graduate and Professional Studies.....	7

Tuition

Graduate and Professional Studies.....	8
Traditional College.....	8

Traditional College Graduation Rates

Traditional Program Cohort Graduation Rates.....	9
Athletic Cohort Graduation Rates.....	9

Freshman Rates

First-Time Freshman Count.....	10
Freshman Return Rate.....	10

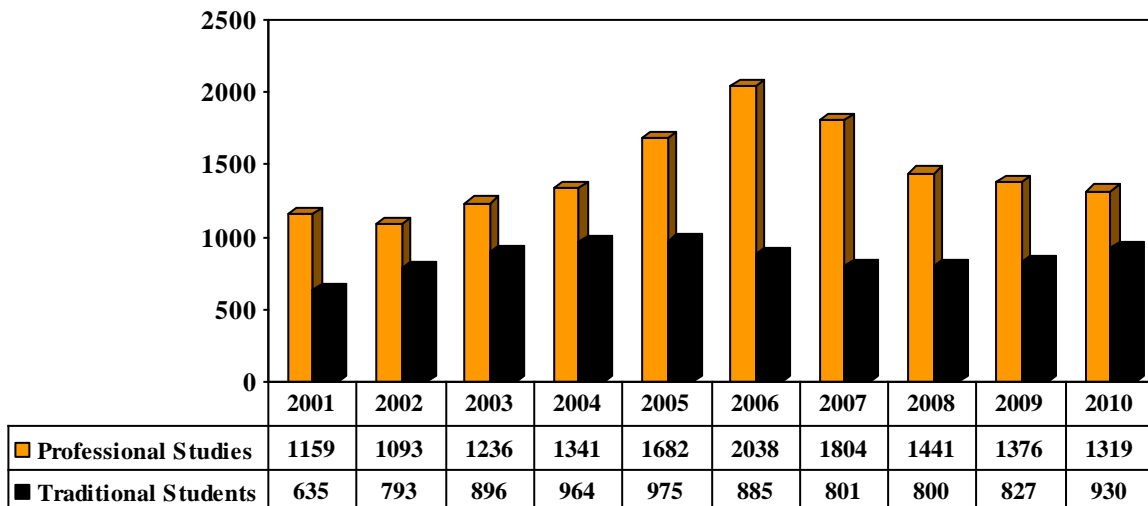
SAT / ACT Trends of Traditional College Entering Class

SAT Trends.....	11
ACT Trends.....	11

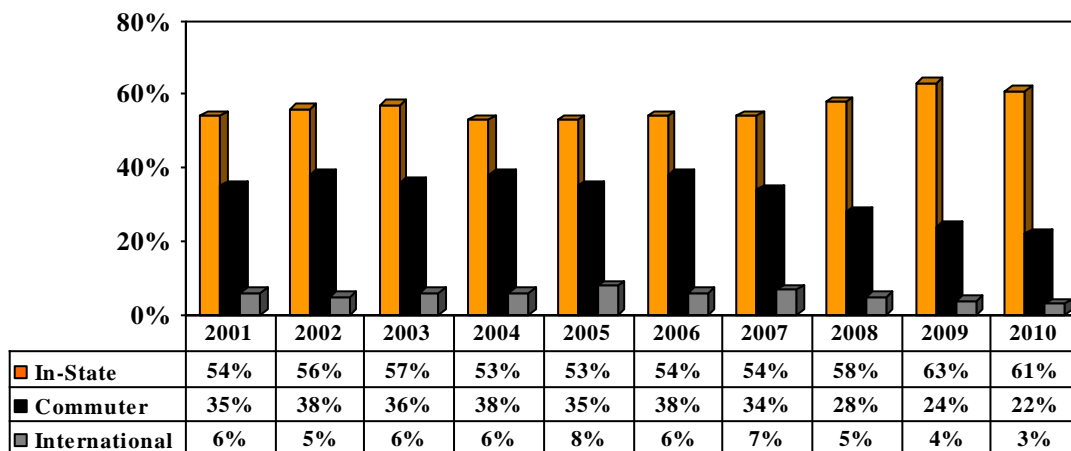
Tusculum Programs of Study.....	Back Cover
---------------------------------	------------

Enrollment History

Ten Year Fall Enrollment History



Traditional College Enrollment History



Official 2010-11 Fall Enrollment

	Headcount	FTE	PT	FT
Overall	2249	2202	70	2179
RC	930	929	1	929
PS	1319	1273	69	1250
Graduate	230	227	5	225
Undergraduate	2019	1976	65	1954

Enrollment History

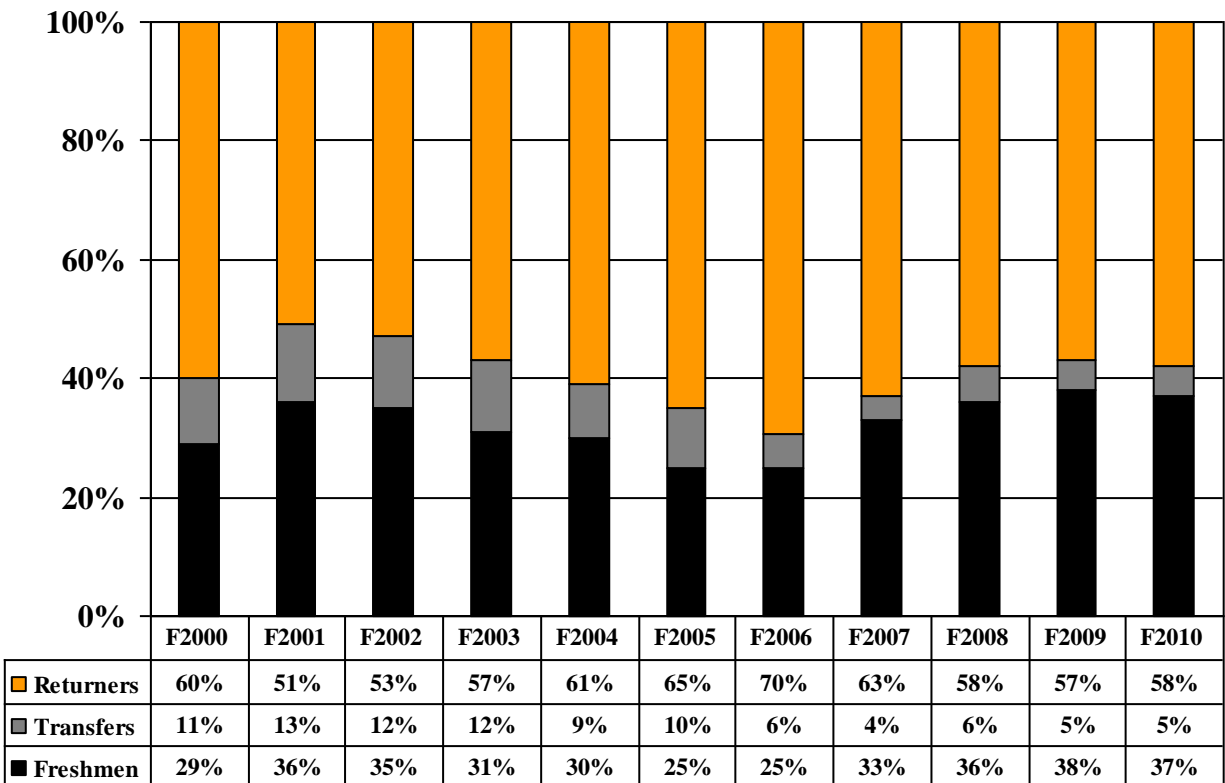
Ethnicity and Gender

Graduate & Professional Studies	2007-08	2008-09	2009-10	2010-11
Total Enrollment	1804	1441	1376	1319
Percent Male	30.4	28.5	30.1	29.8
Percent Female	69.6	71.5	69.9	70.3
Percent Caucasian	90.7	92.0	91.1	90.3
Percent Black	6.7	5.6	5.7	5.6
Percent Other Minority and Unknown	2.6	2.4	3.2	4.1
Traditional College	2007-08	2008-09	2009-10	2010-11
Total Enrollment	801	800	827	930
Percent Male	54.2	52.6	51.8	52.4
Percent Female	45.8	47.4	48.1	47.6
Percent Caucasian	68.3	71.3	73.5	73.8
Percent Black	20.0	19.3	17.4	18.3
Percent Other Minority and Unknown	4.7	4.7	5.1	4.7
Percent NR Alien (International)	7.0	4.7	4.0	3.2

Enrollment History

Freshmen, Transfers, Returning Students

Traditional College



2010-11 Geographical Distribution

Traditional College 29 States and 17 Foreign Countries

State	Female	Male	Total	Percent of Total Traditional Enrollment
Tennessee	320	248	568	61.1
Georgia	17	56	73	7.8
South Carolina	13	43	56	6.0
Virginia	19	21	40	4.3
Florida	8	23	31	3.3
North Carolina	10	20	30	3.2
Ohio	6	12	18	1.9
Kentucky	9	7	16	1.7
Indiana	5	3	8	0.9
Texas	3	5	8	0.9
Alabama	4	2	6	0.6
New York	2	4	6	0.6
Pennsylvania	3	3	6	0.6
California		5	5	0.5
Illinois	3	2	5	0.5
Maryland	1	3	4	0.4
New Jersey	1	3	4	0.4
Colorado	1	1	2	0.2
Connecticut	1	1	2	0.2
Massachusetts		2	2	0.2
Wisconsin	2		2	0.2
Alaska	1		1	0.1
Arkansas		1	1	0.1
District of Columbia	1		1	0.1
Minnesota	1		1	0.1
Missouri		1	1	0.1
New Hampshire	1		1	0.1
Oregon		1	1	0.1
Washington	1		1	0.1
Foreign Students				Percent of Total Foreign Enrollment
Canada	8		8	26.7
Brazil		3	3	10.0
England		2	2	6.7
Guatemala		2	2	6.7
Ireland		2	2	6.7
Taiwan		2	2	6.7
Argentina		1	1	3.3
Australia		1	1	3.3
Cameroon	1		1	3.3
Chile		1	1	3.3
Dominican Republic		1	1	3.3
Germany		1	1	3.3
Netherland		1	1	3.3
Switzerland		1	1	3.3
Wales		1	1	3.3
Ukraine		1	1	3.3
Venezuela	1		1	3.3

2010-11 Geographical Distribution

Traditional College 55 Tennessee Counties

Tennessee County	Female	Male	Total	Percent of TN Students
Greene	78	53	131	23.1
Knox	19	24	43	7.6
Hamblen	13	22	35	6.2
Washington	23	12	35	6.2
Hawkins	28	5	33	5.8
Hamilton	20	8	28	4.9
Sullivan	20	6	26	4.6
Cocke	12	10	22	3.9
Sevier	12	10	22	3.9
Davidson	8	13	21	3.7
Carter	10	4	14	2.5
Jefferson	10	3	13	2.3
Claiborne	5	6	11	1.9
Blount	6	3	9	1.6
Mcminn	4	5	9	1.6
Monroe	4	4	8	1.4
Rhea	3	4	7	1.2
Rutherford	4	3	7	1.2
Williamson	5	2	7	1.2
Anderson	2	4	6	1.1
Grainger	3	3	6	1.1
Scott		6	6	1.1
Shelby	3	3	6	1.1
Unicoi	4	2	6	1.1
Roane	3	2	5	0.9
Bradley	4		4	0.7
Campbell	2	2	4	0.7
Dickson	1	2	3	0.5
Humphreys	2	1	3	0.5
Marion		3	3	0.5
Sumner	1	2	3	0.5
Dekalb		2	2	0.4
Franklin		2	2	0.4
Hancock	2		2	0.4
Johnson	2		2	0.4
Loudon		2	2	0.4
Montgomery		2	2	0.4
Robertson		2	2	0.4
Union		2	2	0.4
Carroll		1	1	0.2
Cheatham		1	1	0.2
Coffee		1	1	0.2
Cumberland		1	1	0.2
Hardin		1	1	0.2
Haywood	1		1	0.2
Hickman		1	1	0.2
Lincoln		1	1	0.2
Marshall		1	1	0.2
Mcnairy	1		1	0.2
Morgan		1	1	0.2
Putnam	1		1	0.2
Sevier	1		1	0.2
Stewart	1		1	0.2
Warren	1		1	0.2
Weakley	1		1	0.2
TOTAL	320	248	568	

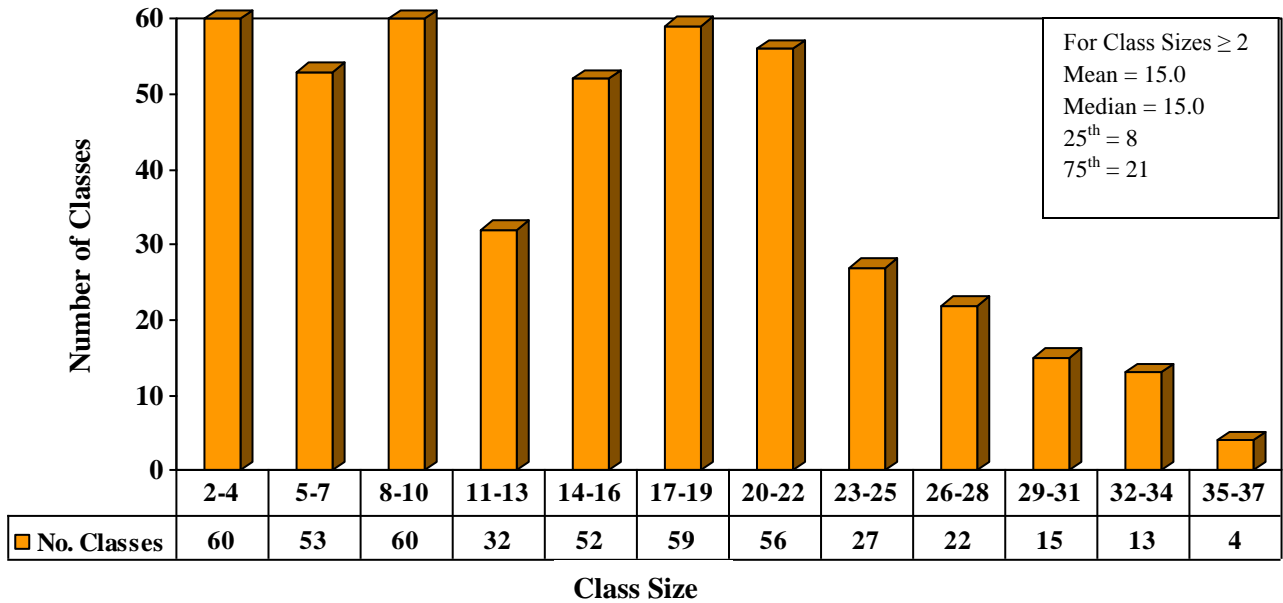
2010-11 Geographical Distribution

Graduate & Professional Studies – Tennessee Counties

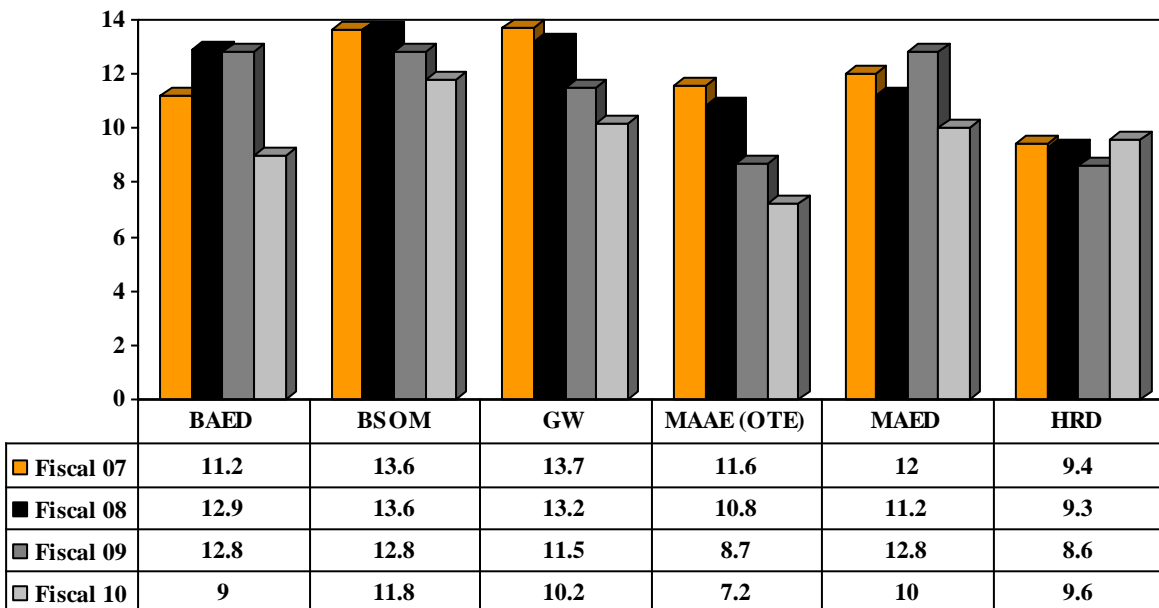
<u>County</u>	<u>Female</u>	<u>Male</u>	<u>Total</u>	<u>Percent of TN Enrollment</u>
Knox	197	133	330	25.5
Greene	128	40	168	13.0
Hamblen	98	31	129	10.0
Blount	76	33	109	8.4
Washington	53	19	72	5.6
Jefferson	46	19	65	5.0
Cocke	49	12	61	4.7
Anderson	41	16	57	4.4
Sevier	39	9	48	3.7
Hawkins	23	14	37	2.9
Loudon	22	10	32	2.5
Sullivan	21	11	32	2.5
Roane	20	10	30	2.3
Grainger	21	8	29	2.2
Campbell	12	3	15	1.2
Claiborne	13	2	15	1.2
Hancock	10	2	12	0.9
Monroe	9	3	12	0.9
Carter	6	1	7	0.5
Mcminn	3	4	7	0.5
Morgan	5	2	7	0.5
Union	5	1	6	0.5
Unicoi	4	1	5	0.4
Rhea	2		2	0.2
Camden		1	1	0.1
Davidson		1	1	0.1
Hamilton		1	1	0.1
Knoxville		1	1	0.1
Total	904	389	1293	

Class Sizes 2009-10

Traditional College

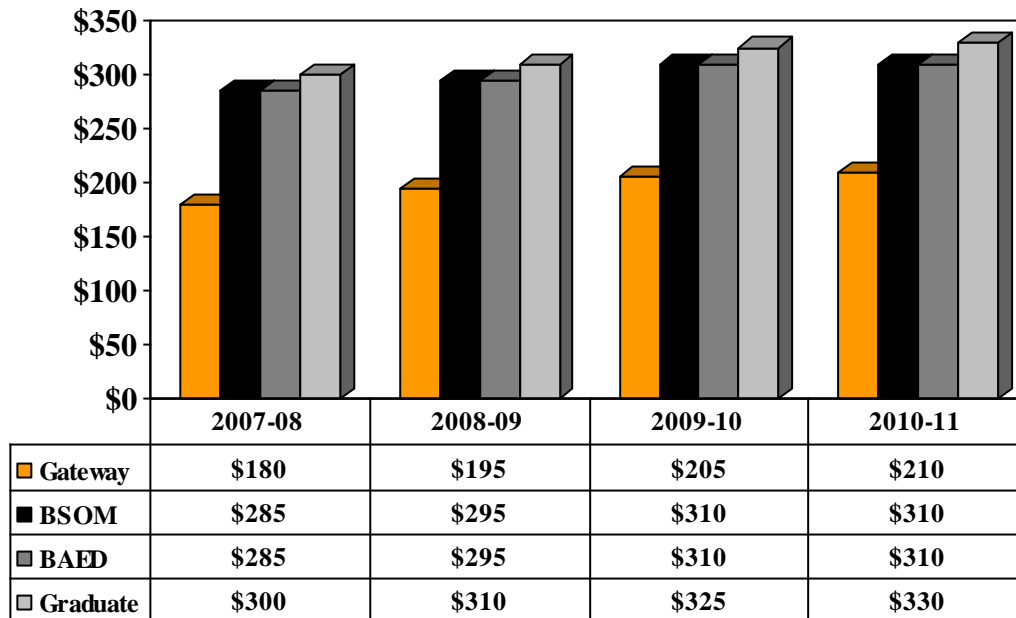


Graduate & Professional Studies

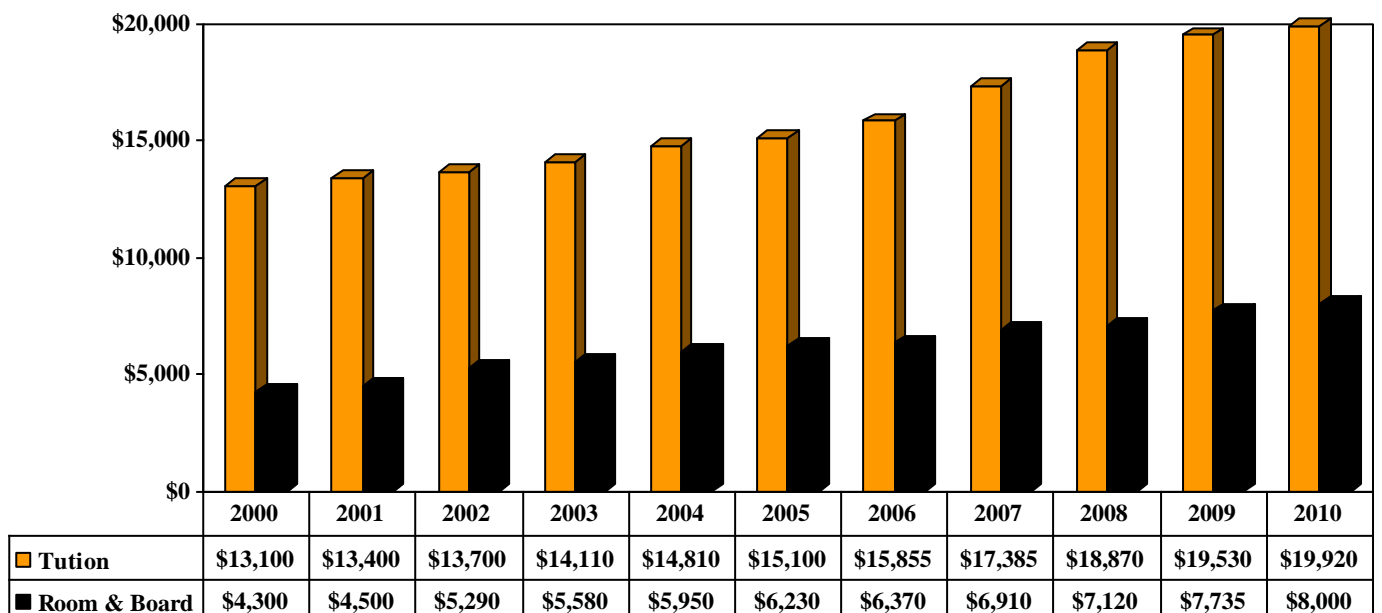


Tuition

Graduate & Professional Studies Cost per Semester Hour

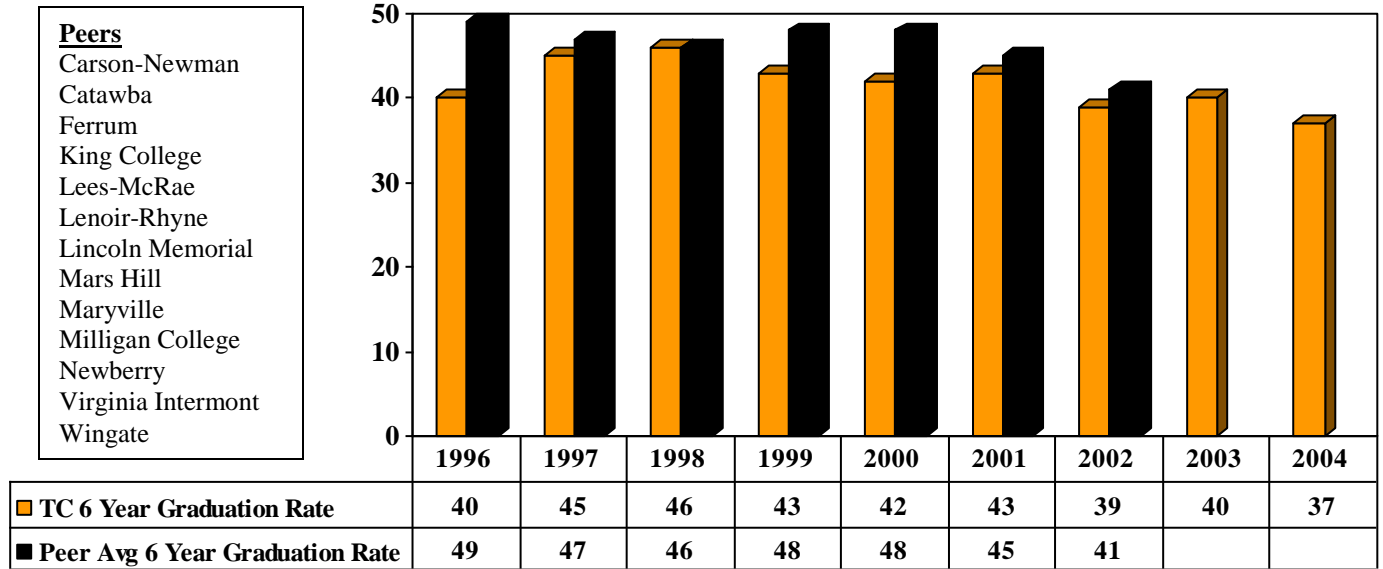


Traditional College Tuition, Room & Board

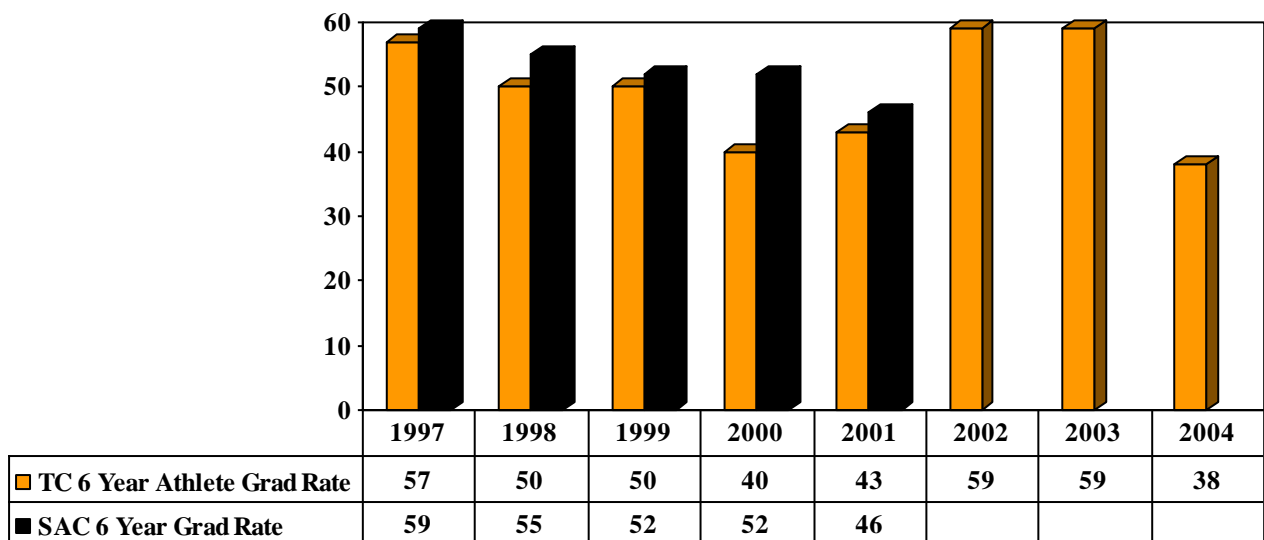


Traditional College Graduation Rates

Cohort Graduation Rates (Percent of Cohort Graduated)

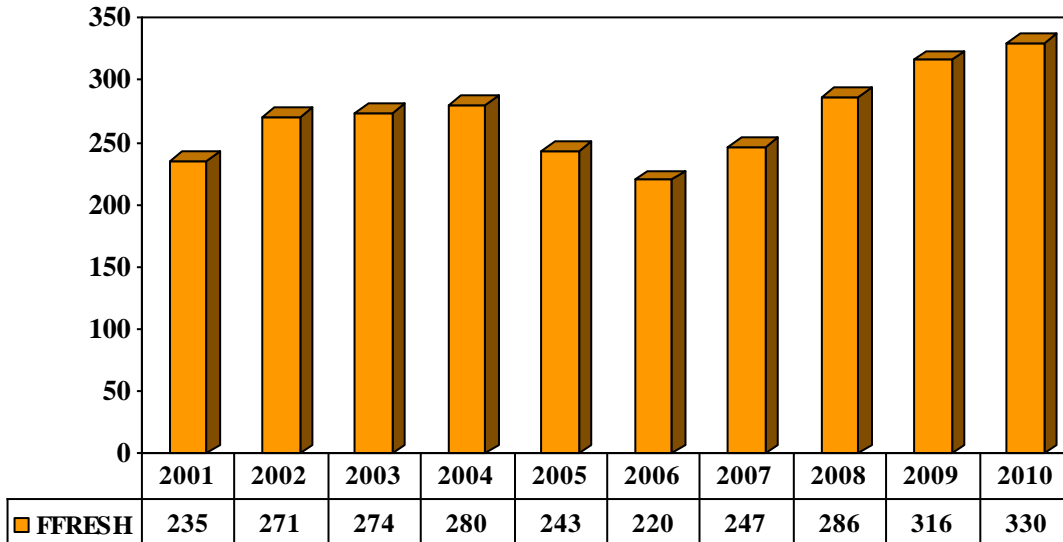


Traditional Students Athletic Cohort Graduation Rates (Percent of Cohort Graduated)

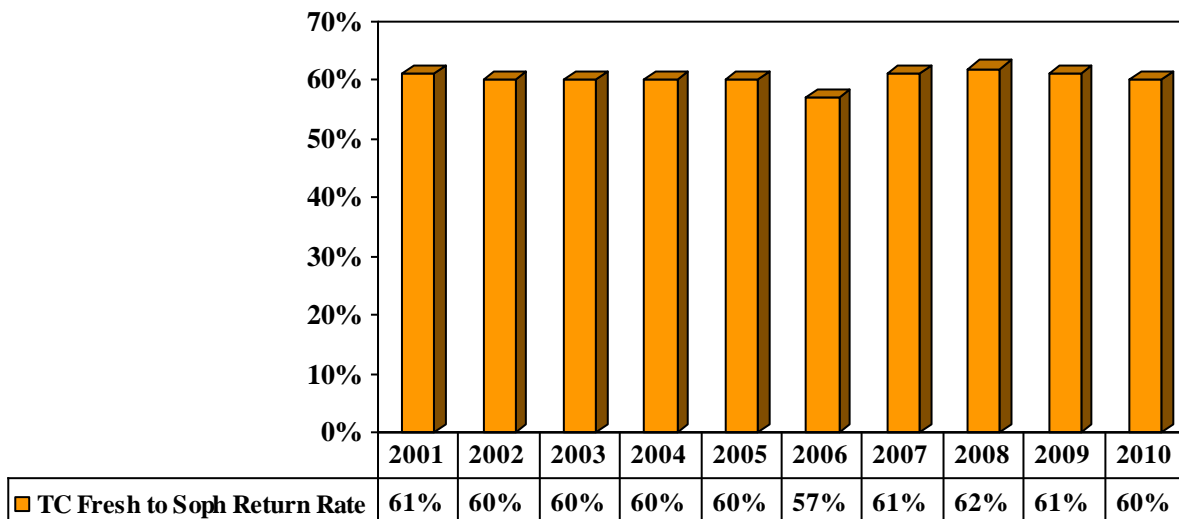


Freshman Rates

Traditional College Fall First-Time Freshmen by Cohort Year

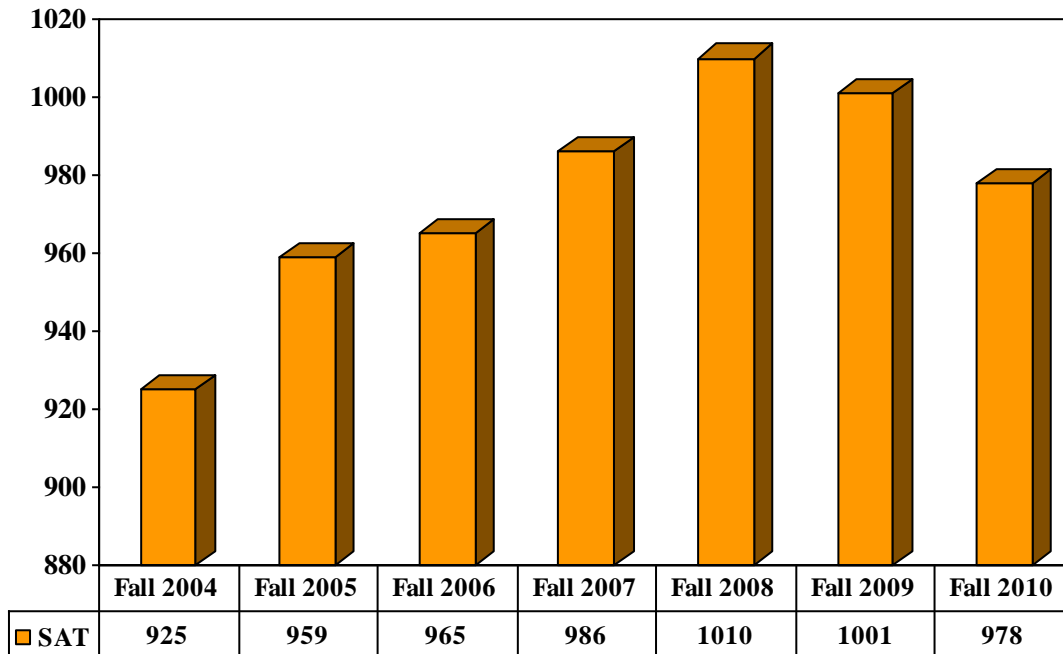


Cohort Return Rate x Cohort Year Fall Freshmen Returning For Sophomore Year

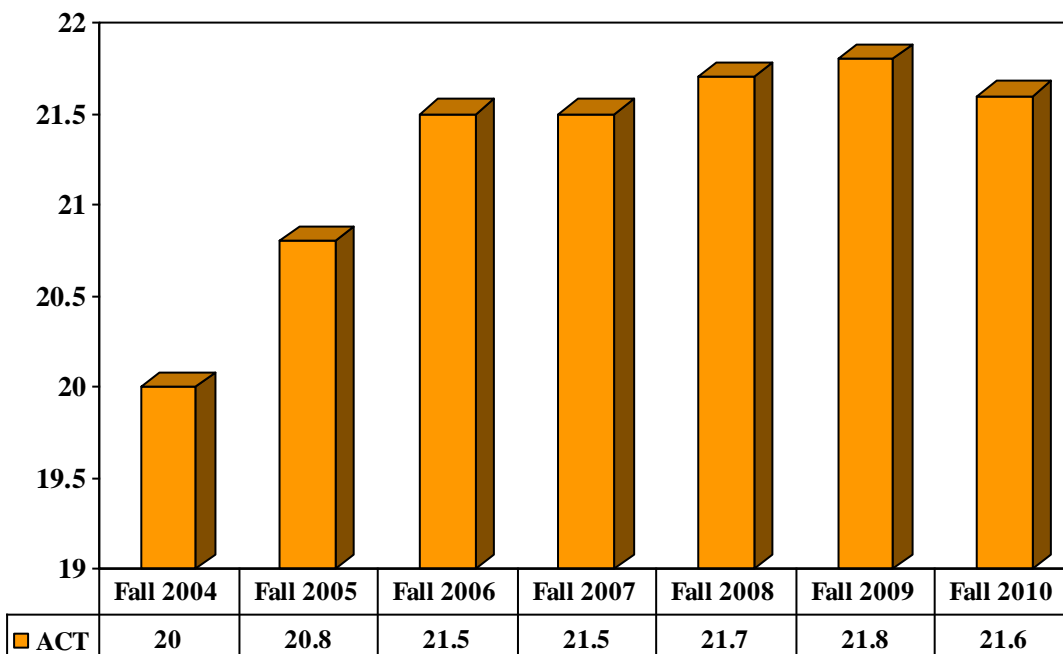


SAT / ACT Trends of Traditional College Entering Class

SAT Trends



ACT Trends



Tusculum College Programs of Study 2010-11

Majors (and Concentrations)

Art & Design

- a. Graphic Design
- b. Studio Art

Athletic Training

Biology

- a. Medical Pre-Professional
- b. Pre-Pharmacy
- c. Pre-Physical Therapy
- d. Medical Technology

Business Administration

- a. Economics and International Business
- b. General Management
- b. Information Technology
- d. Management Accounting

English

- a. Creative Writing
- b. Journalism and Professional Writing
- c. Literature

Environmental Science

- Field Guide/Naturalist
- Film & Broadcasting
- Health and Wellness
- History
- Human Growth and Learning
- Mathematics
 - a. Math/Computer Science
- Museum Studies
- Physical Education
- Political Science
- Psychology
- Sport Management
- Sports Science

Tusculum College offers five categories of teacher licensure programs:

1. Pre-Secondary Education

- Early Childhood Education PreK-3
- Elementary Education K-6

2. Secondary Education

- Biology 7-12
- Business 7-12
- English 7-12
- Government 7-12
- History 7-12
- Mathematics 7-12
- Psychology 9-12

3. K-12 Education

- Health & Wellness K-12
- Physical Education K-12
- Visual Arts K-12

4. Special Education

- Special Education Early Childhood Pre K-3
- Special Education Modified and Comprehensive K-12

5. Middle Grades Education 4-8

Minors

Biology, Broadcast News, Chemistry, Civic Engagement, Coaching, Computer Science, Creative Writing, Economics, Environmental Science, Film and Broadcasting, History, International Business, Journalism, Literature, Management, Mathematics, Museum Studies, Political Science, Psychology, Religious Studies, Sports Broadcasting, Theatre, Visual Arts and the following minors in Education: English, History, Early Childhood Education, Elementary Education, Human Growth and Learning – Early Childhood Education – Pre K 4 or Pre K 3, Human Growth and Learning – Early Education, K – 6, Mathematics, and Special Education Modified & Comprehensive.

Other Disciplines

Tusculum College also offers additional courses in the following disciplines: Geography, Geology, Humanities, Music, Physics, Sociology, and Spanish.

Graduate and Professional Studies Programs for Adult Students

Gateway Program

- Bachelor of Science in Organizational Management
- Bachelor of Science in Business Administration

(Add-On Concentrations available for the Bachelor of Science in Organizational Management and in Business Administration are Applied Information Technology, Financial Management, Human Resource Management and Marketing)

Bachelor of Arts in Education/Human Growth and Learning – K-6

- Master of Arts in Education: Curriculum and Instruction, Organizational Training and Education, & Human Resource Development
- Master of Arts in Teaching
- Master of Arts in Organizational Management