



# FACT BOOK

2009-10

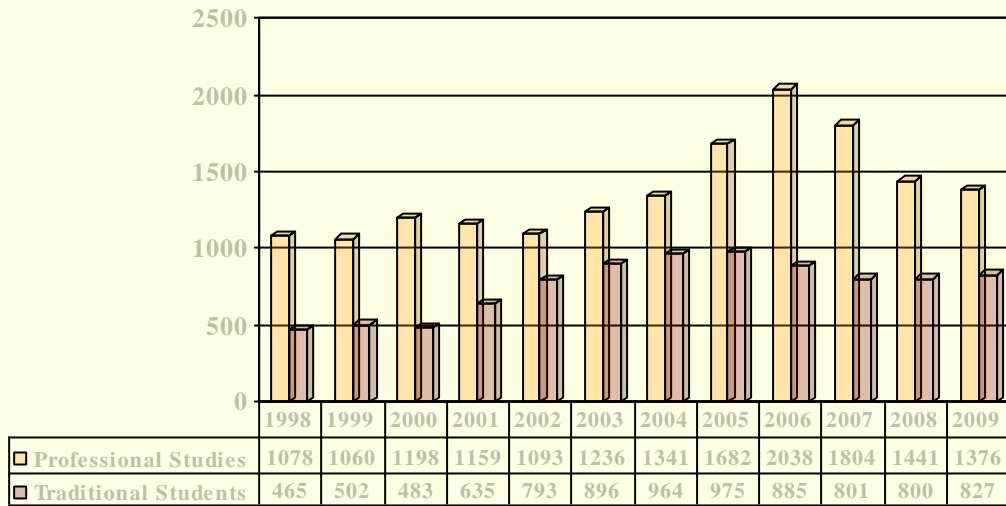
# Tusculum College

## FACT BOOK

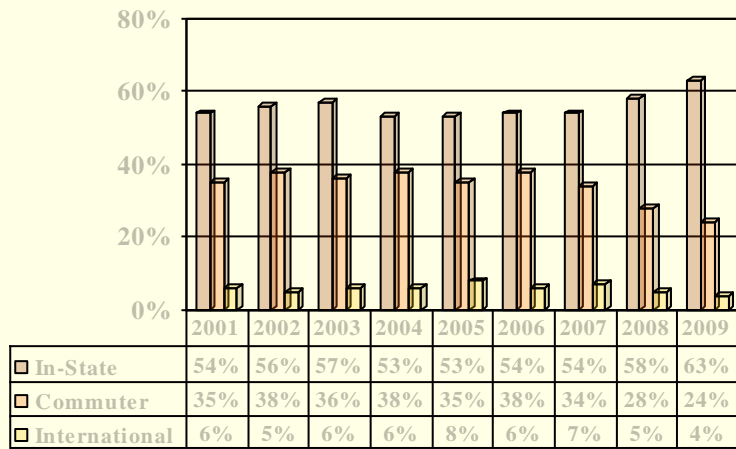
### College Statistics 2009-10

<b>Enrollment History .....</b>	<b>1</b>
<b>Enrollment by Student Status (Traditional College) .....</b>	<b>2</b>
<b>Ethnicity and Gender .....</b>	<b>3</b>
<b>Traditional Student by State &amp; Foreign Country .....</b>	<b>4</b>
<b>Traditional Student by Tennessee County .....</b>	<b>5</b>
<b>Professional Studies Student by County .....</b>	<b>6</b>
<b>Class Size .....</b>	<b>7</b>
<b>Tuition .....</b>	<b>8</b>
<b>Traditional Program Cohort Graduation Rates .....</b>	<b>9</b>
<b>First-Time Freshman Count and Return Rate .....</b>	<b>10</b>
<b>ACT / SAT Trends .....</b>	<b>11</b>
<b>Tusculum Programs of Study (Back Cover)</b>	

## Twelve Year Enrollment History



## Traditional College Enrollment History



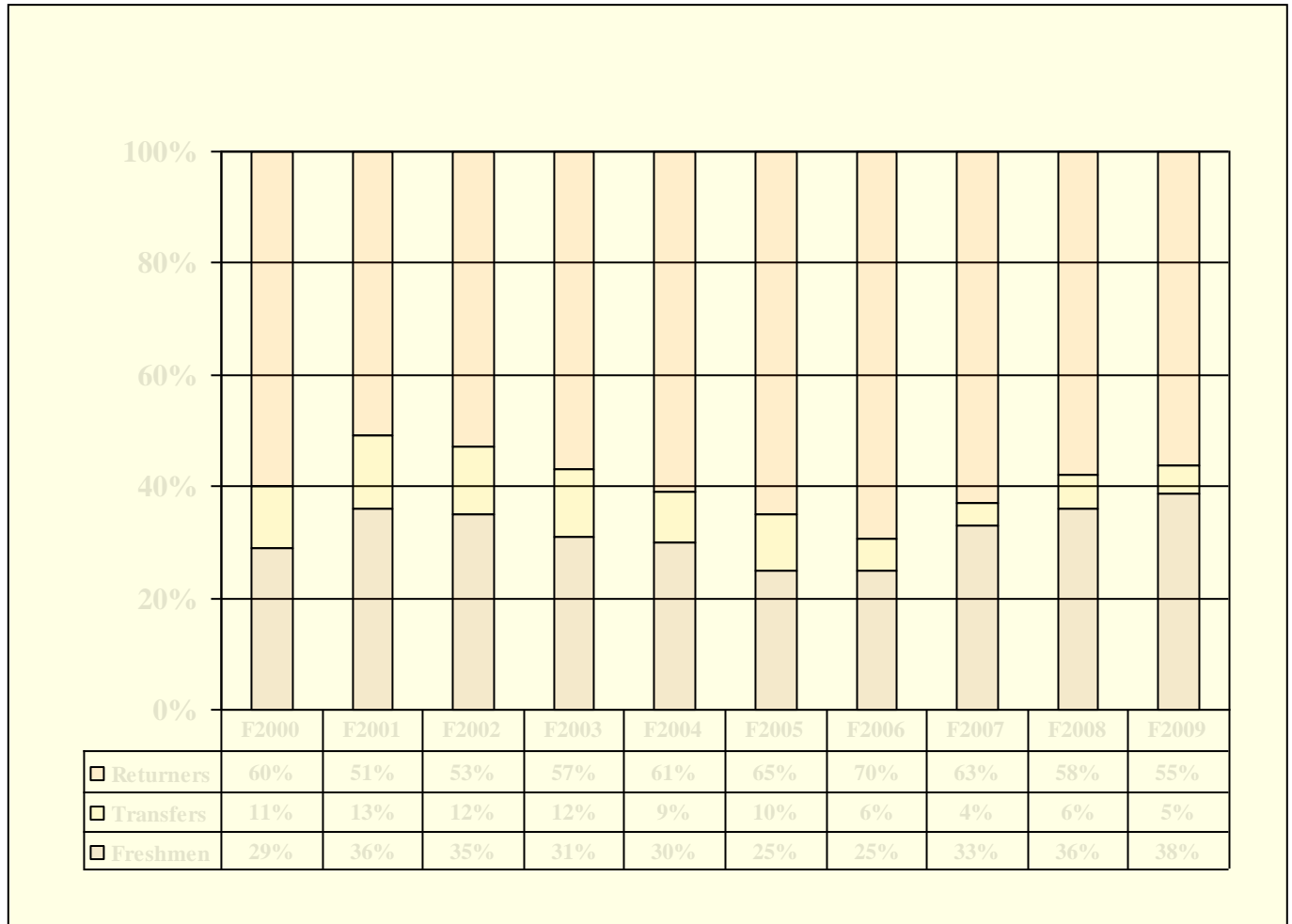
### Official 2009-10 Enrollment

	Headcount	FTE	PT	FT
<b>Overall</b>	2203	2164	59	2144
<b>RC</b>	827	824	4	823
<b>PS</b>	1376	1339	55	1321
<b>Graduate</b>	184	181	2	182
<b>Undergraduate</b>	2019	1981	57	1962

# Enrollment

## Freshmen, Transfers, Returning Students

### Traditional College



# Enrollment History

## Ethnicity and Gender

Professional Studies	2006-07	2007-08	2008-09	2009-10
Total Enrollment	2038	1804	1441	1376
Percent Male	33.7	30.4	28.5	30.1
Percent Female	66.3	69.6	71.5	69.9
Percent Caucasian	90.6	90.7	92.0	91.1
Percent Black	6.6	6.7	5.6	5.7
Percent Other Minority and Unknown	2.8	2.6	2.4	3.2
Traditional College	2006-07	2007-08	2008-09	2009-10
Total Enrollment	885	801	800	827
Percent Male	53.0	54.2	52.6	51.8
Percent Female	47.0	45.8	47.4	48.1
Percent Caucasian	69.6	68.3	71.3	73.5
Percent Black	19.6	20.0	19.3	17.4
Percent Other Minority and Unknown	4.2	4.7	4.7	5.1
Percent NR Alien (International)	6.6	7.0	4.7	4.0

# Traditional College

## 2009-10 Geographical Distribution 31 States and 17 Foreign Countries

State	Female	Male	Total	Percent of Total Traditional Enrollment
Tennessee	285	232	517	62.5%
Georgia	10	49	59	7.1%
South Carolina	12	23	35	4.2%
Virginia	18	16	34	4.1%
North Carolina	12	19	31	3.7%
Florida	8	13	21	2.5%
Ohio	11	6	17	2.1%
California	2	11	13	1.6%
Kentucky	6	6	12	1.5%
Alabama	4	5	9	1.1%
Indiana	4	1	5	0.6%
Maryland	1	4	5	0.6%
Texas	2	3	5	0.6%
Illinois	4		4	0.5%
New York	2	2	4	0.5%
Pennsylvania	1	3	4	0.5%
Colorado	2	1	3	0.4%
Massachusetts		2	2	0.2%
Wisconsin	1	1	2	0.2%
Arkansas		1	1	0.1%
Arizona		1	1	0.1%
Connecticut		1	1	0.1%
Kansas		1	1	0.1%
Minnesota	1		1	0.1%
Missouri		1	1	0.1%
Mississippi		1	1	0.1%
New Hampshire	1		1	0.1%
New Jersey		1	1	0.1%
Utah		1	1	0.1%
Washington	1		1	0.1%
West Virginia		1	1	0.1%
<b>Foreign Students</b>				<b>Percent of Total Foreign Enrollment</b>
Canada	6	2	8	24.2%
Brazil		4	4	12.1%
United Kingdom		3	3	9.1%
Argentina		2	2	6.1%
England		2	2	6.1%
Guatemala		2	2	6.1%
Venezuela	2		2	6.1%
Chile		1	1	3.0%
Croatia		1	1	3.0%
Finland	1		1	3.0%
Honduras	1	1	1	3.0%
Israel		1	1	3.0%
Serbia		1	1	3.0%
Sweden		1	1	3.0%
Switzerland		1	1	3.0%
Taiwan		1	1	3.0%
Ukraine		1	1	3.0%

# 2009-10 GEOGRAPHICAL DISTRIBUTION

## Traditional College 51 Tennessee Counties

<u>Tennessee County</u>	<u>Female</u>	<u>Male</u>	<u>Total</u>	<u>Percent of TN Students</u>
Greene	76	44	120	23.2%
Washington	22	11	33	6.4%
Hawkins	23	8	31	6.0%
Knox	9	19	28	5.4%
Cocke	15	11	26	5.0%
Hamilton	17	8	25	4.8%
Davidson	7	15	22	4.3%
Hamblen	10	12	22	4.3%
Sullivan	10	11	21	4.1%
Jefferson	13	7	20	3.9%
Sevier	12	5	17	3.3%
Blount	3	11	14	2.7%
Monroe	6	4	10	1.9%
Williamson	6	4	10	1.9%
Anderson	5	4	9	1.7%
Carter	7	2	9	1.7%
Shelby	4	5	9	1.7%
Claiborne	4	3	7	1.4%
McMinn	3	4	7	1.4%
Rhea	3	4	7	1.4%
Loudon	2	3	5	1.0%
Rutherford	4	1	5	1.0%
Johnson	2	2	4	0.8%
Roane	1	3	4	0.8%
Scott	1	3	4	0.8%
Unicoi	1	3	4	0.8%
Marion	1	2	3	0.6%
Bradley	2		2	0.4%
Campbell	1	1	2	0.4%
Coffee		2	2	0.4%
Cumberland		2	2	0.4%
Dickson	1	1	2	0.4%
Franklin		2	2	0.4%
Grainger	1	1	2	0.4%
Hancock	2		2	0.4%
Lincoln		2	2	0.4%
Madison	2		2	0.4%
Montgomery	1	1	2	0.4%
Morgan	1	1	2	0.4%
Putnam	1	1	2	0.4%
Weakley	1	1	2	0.4%
Crockett		1	1	0.2%
Dekalb		1	1	0.2%
Dyer	1		1	0.2%
Grundy	1		1	0.2%
Hardin		1	1	0.2%
Haywood	1		1	0.2%
Humphreys		1	1	0.2%
Marshall		1	1	0.2%
Maury		1	1	0.2%
McNairy	1		1	0.2%
Robertson		1	1	0.2%
Stewart	1		1	0.2%
Sumner		1	1	0.2%
<b>TOTAL</b>	<b>285</b>	<b>232</b>	<b>517</b>	

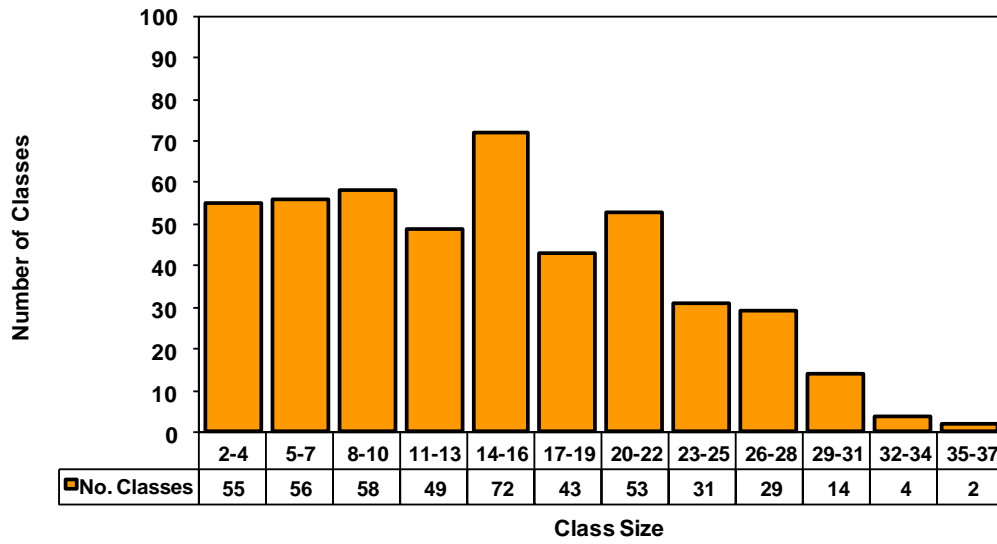
## 2009-10 GEOGRAPHICAL DISTRIBUTION

### Graduate & Professional Studies – Tennessee Counties

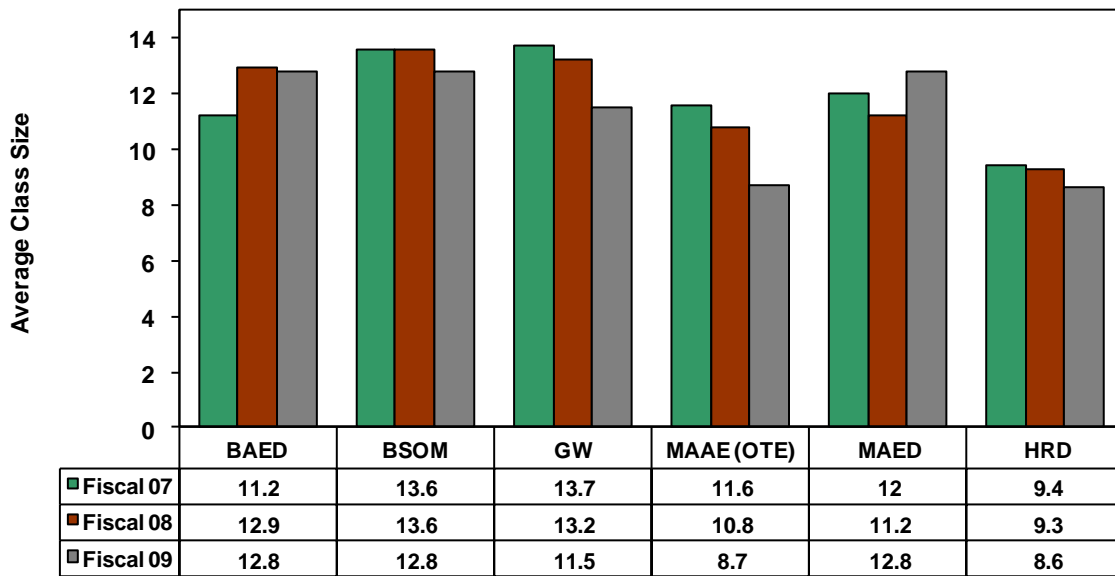
<u>County</u>	<u>Female</u>	<u>Male</u>	<u>Total</u>	<u>Percent of Total GPS Enrollment</u>
Knox	223	126	349	25.36%
Greene	140	48	188	13.66%
Hamblen	94	39	133	9.67%
Blount	75	33	108	7.85%
Anderson	46	15	61	4.43%
Jefferson	43	14	57	4.14%
Washington	37	20	57	4.14%
Cocke	41	14	55	4.00%
Hawkins	32	18	50	3.63%
Sevier	40	9	49	3.56%
Grainger	25	12	37	2.69%
Sullivan	25	11	36	2.62%
Loudon	22	9	31	2.25%
Roane	21	10	31	2.25%
Claiborne	22	4	26	1.89%
Campbell	15	4	19	1.38%
Monroe	11	7	18	1.31%
Other States	9	5	14	1.02%
Hancock	11	2	13	0.94%
Morgan	7	3	10	0.73%
McMinn	4	5	9	0.65%
Carter	6	2	8	0.58%
Unicoi	5	2	7	0.51%
Union	4	1	5	0.36%
Cumberland		1	1	0.07%
Davidson	1		1	0.07%
Loudon	1		1	0.07%
Putnam	1		1	0.07%
Rhea	1		1	0.07%
<b>TOTAL</b>	<b>953</b>	<b>409</b>	<b>1376</b>	



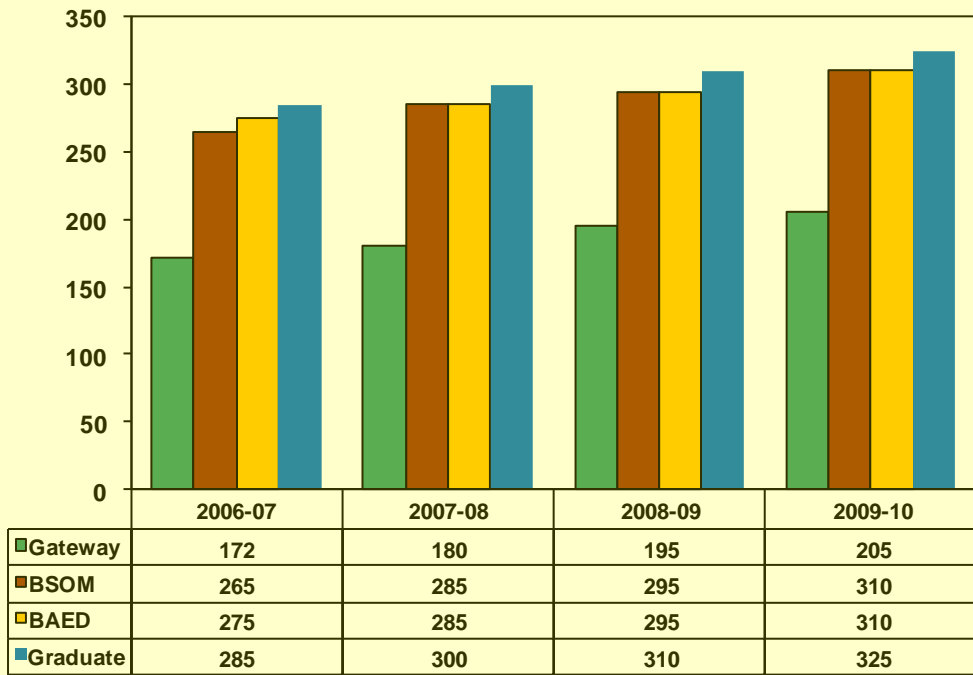
**Class Sizes  
Traditional College  
2008-09**



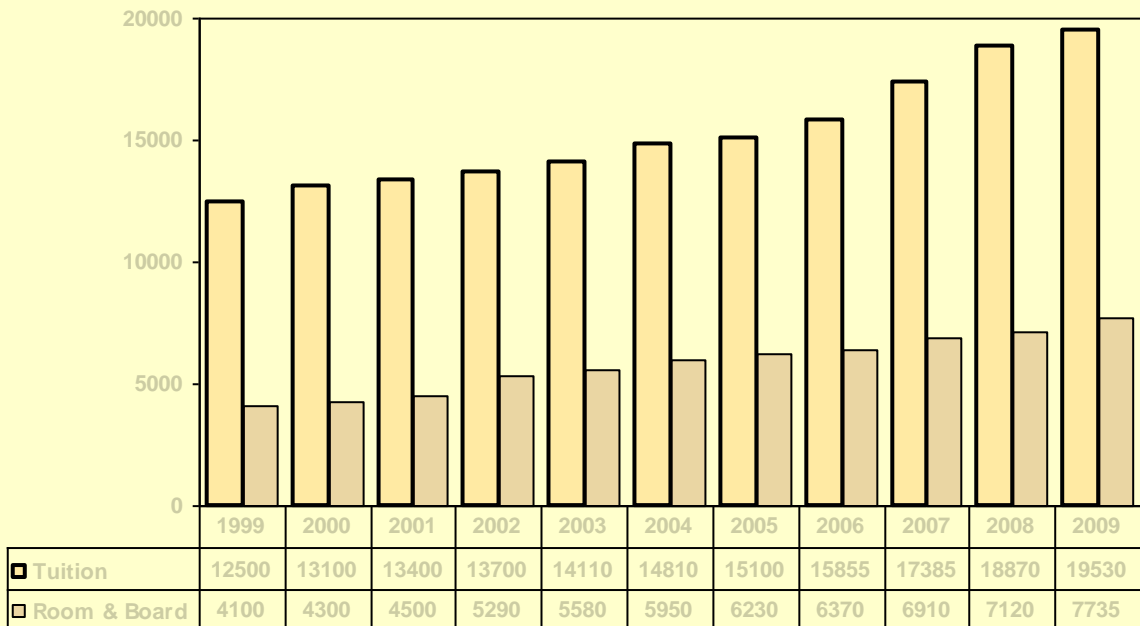
**Average Class Size  
GPS**



**GPS Tuition  
Cost per Semester Hour**



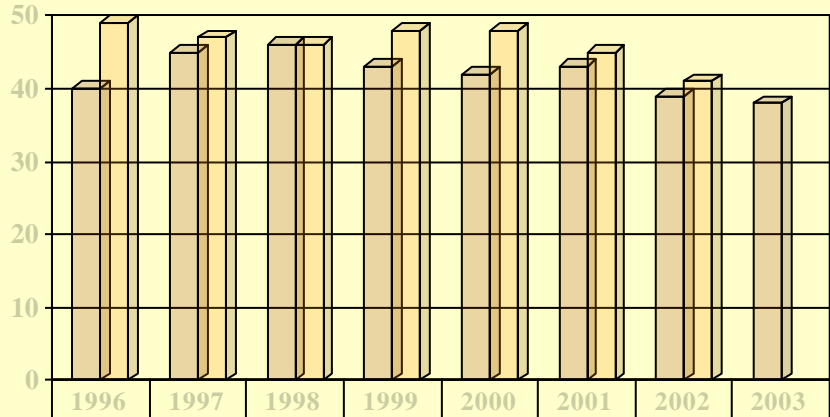
**Tuition, Room & Board  
Traditional College**



### Traditional Students Cohort Graduation Rates (Percent of Cohort Graduated)

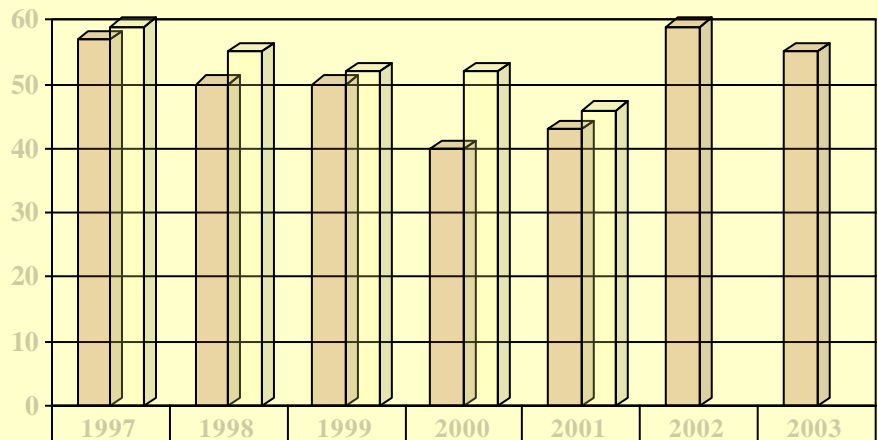
Peers

- Carson-Newman
- Catawba
- Ferrum
- King College
- Lees-McRae
- Lenoir-Rhyne
- Lincoln Memorial
- Mars Hill
- Maryville
- Milligan College
- Newberry
- Virginia Intermont
- Wingate



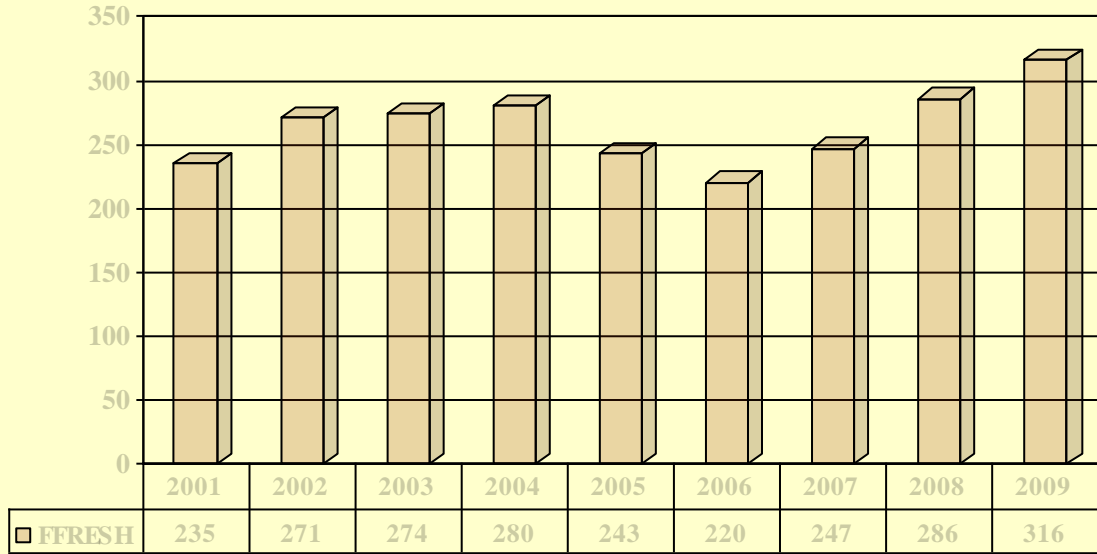
TC 6 Year Graduation Rate	40	45	46	43	42	43	39	38
Peer Avg 6 Year Graduation Rate	49	47	46	48	48	45	41	

### Traditional Students Athletic Cohort Graduation Rates (Percent of Cohort Graduated)

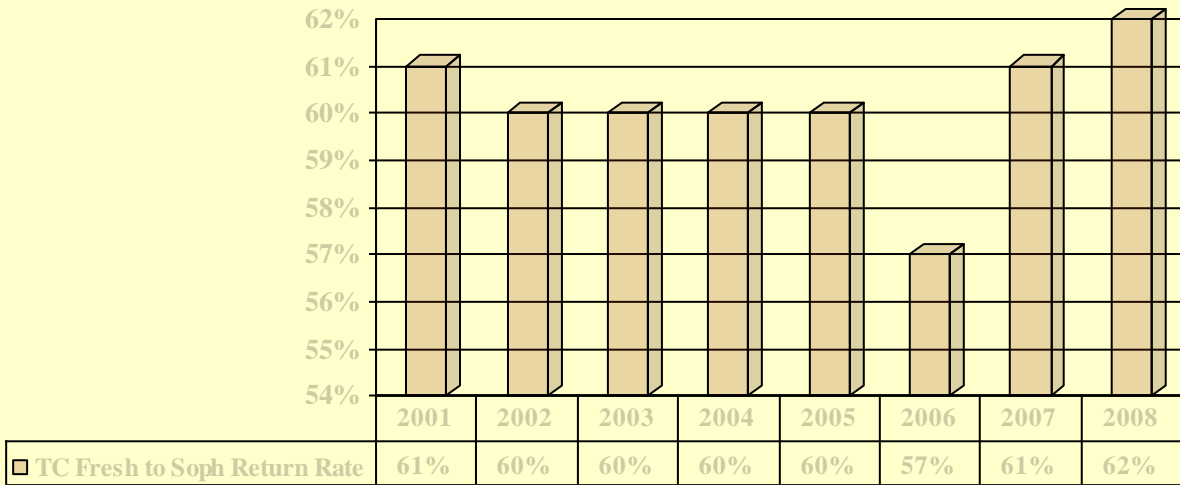


TC 6 Year Athlete Grad Rate	57	50	50	40	43	59	55
SAC 6 Year Grad Rate	59	55	52	52	46		

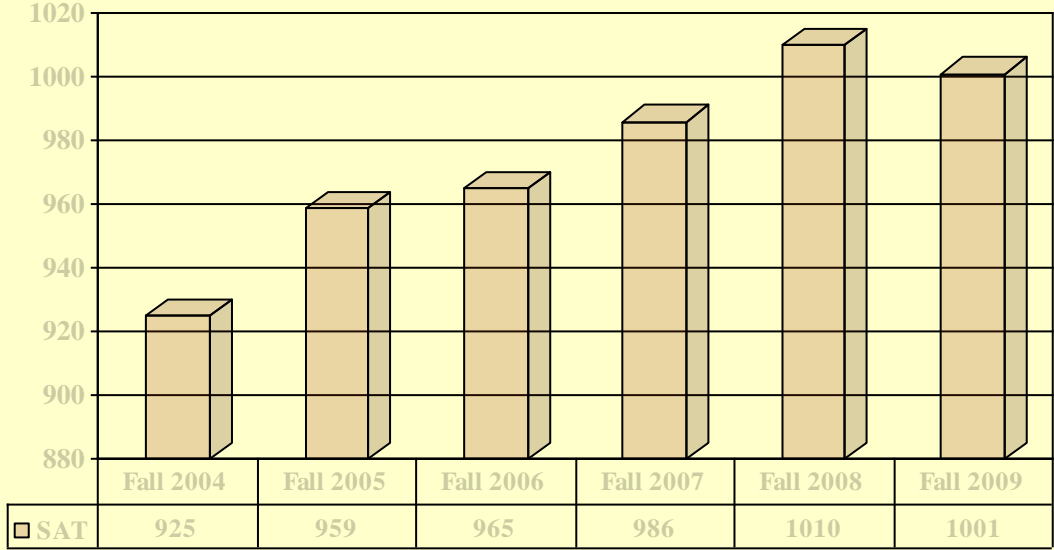
### Traditional College Fall First-Time Freshmen by Cohort Year



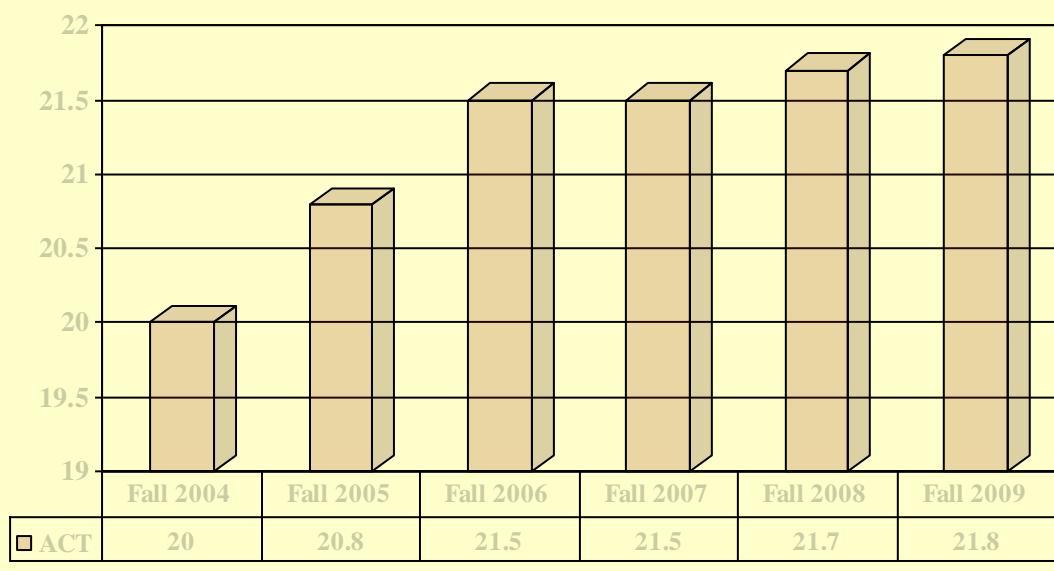
### Cohort Return Rate x Cohort Year Fall Freshmen Returning For Sophomore Year



### Traditional Students SAT Trends - Entering Class



### Traditional Students ACT Trends - Entering Class



# Tusculum College Programs of Study 2009-10

## Majors (and Concentrations)

<p>Art &amp; Design</p> <ul style="list-style-type: none"> <li>a. Graphic Design</li> <li>b. Studio Art</li> </ul> <p>Athletic Training</p> <p>Biology</p> <ul style="list-style-type: none"> <li>a. Medical Pre-Professional</li> <li>b. Pre-Pharmacy</li> <li>c. Pre-Physical Therapy</li> </ul> <p>Business Administration</p> <ul style="list-style-type: none"> <li>a. Economics and International Business</li> <li>b. General Management</li> <li>c. Information Technology</li> <li>d. Management Accounting</li> </ul> <p>English</p> <ul style="list-style-type: none"> <li>a. Creative Writing</li> <li>b. Journalism and Professional Writing</li> <li>c. Literature</li> </ul>	<p>Environmental Science</p> <p>Field Guide/Naturalist</p> <p>Film &amp; Broadcasting</p> <p>Health and Wellness</p> <p>History</p> <p>Human Growth and Learning</p> <p>Mathematics</p> <ul style="list-style-type: none"> <li>a. Math/Computer Science</li> </ul> <p>Museum Studies</p> <p>Physical Education</p> <p>Political Science</p> <p>Psychology</p> <p>Sport Management</p> <p>Sports Science</p>
---	---

### Tusculum College offers five categories of teacher licensure programs:

- |  |  |
|--|--|
| <p><b>1. Pre-Secondary Education</b></p> <ul style="list-style-type: none"> <li>Early Childhood Education PreK-3</li> <li>Elementary Education K-6</li> </ul> <p><b>2. Secondary Education</b></p> <ul style="list-style-type: none"> <li>Biology 7-12</li> <li>Business 7-12</li> <li>English 7-12</li> <li>Government 7-12</li> <li>History 7-12</li> <li>Mathematics 7-12</li> <li>Psychology 9-12</li> </ul> | <p><b>3. K-12 Education</b></p> <ul style="list-style-type: none"> <li>Health &amp; Wellness K-12</li> <li>Physical Education K-12</li> <li>Visual Arts K-12</li> </ul> <p><b>4. Special Education</b></p> <ul style="list-style-type: none"> <li>Special Education Early Childhood Pre K-3</li> <li>Special Education Modified and Comprehensive K-12</li> </ul> <p><b>5. Middle Grades Education 4-8</b></p> |
|--|--|

### Minors

Biology, Broadcast News, Chemistry, Civic Engagement, Coaching, Computer Science, Creative Writing, Economics, Environmental Science, Film and Broadcasting, History, International Business, Journalism, Literature, Management, Mathematics, Museum Studies, Political Science, Psychology, Religious Studies, Sports Broadcasting, Theatre, Visual Arts and the following minors in Education: English, History, Early Childhood Education, Elementary Education, Human Growth and Learning – Early Childhood Education – Pre K 4 or Pre K 3, Human Growth and Learning – Early Education, K – 6, Mathematics, and Special Education Modified & Comprehensive.

### Other Disciplines

Tusculum College also offers additional courses in the following disciplines: Geography, Geology, Music, Physics, Sociology, and Spanish.

## Graduate and Professional Studies Programs for Working Adult Students

- Gateway Program
- Bachelor of Science in Organizational Management  
(With Add-On Concentrations in Human Resource Management and Marketing)
- Bachelor of Arts in Education/Human Growth and Learning – K-6
- Master of Arts in Education: Curriculum and Instruction, Organizational Training and Education,  
& Human Resource Development
- Master of Arts in Organizational Management