

**FACT BOOK**  
**2008-09**

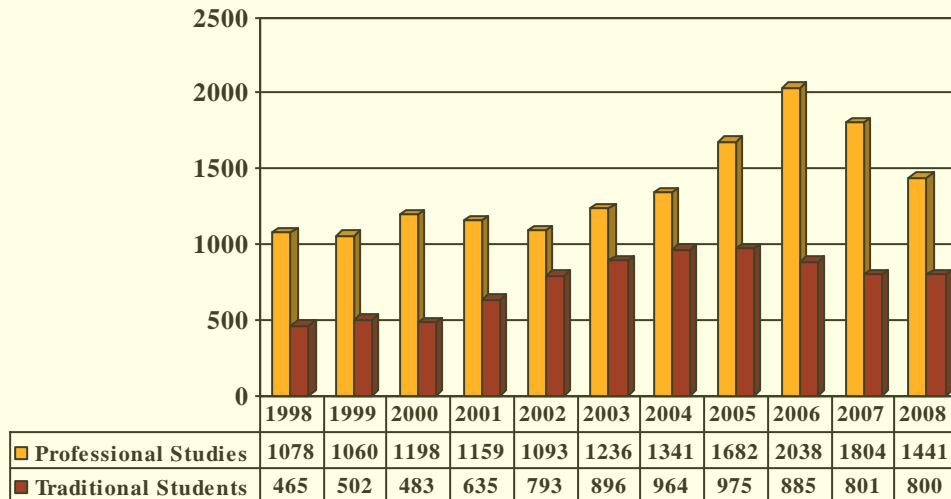
# Tusculum College

## FACT BOOK

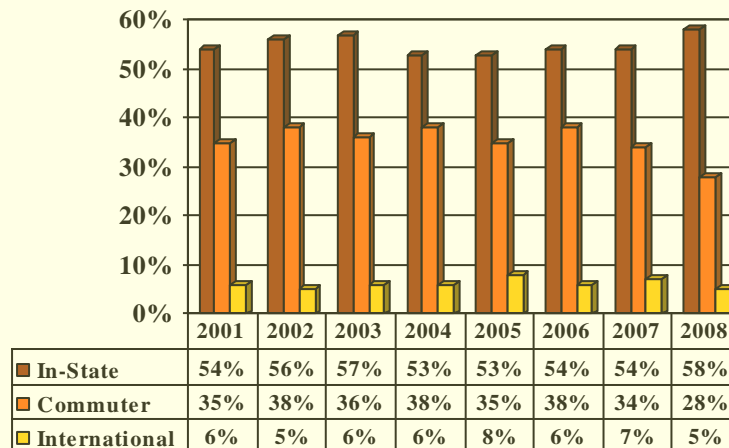
### College Statistics 2008-09

Enrollment History .....	1
Enrollment by Student Status (Traditional College) .....	2
Ethnicity and Gender .....	3
Traditional Student by State & Foreign Country .....	4
Traditional Student by Tennessee County .....	5
Professional Studies Student by County .....	6
Class Size .....	7
Tuition .....	8
Traditional Program Cohort Graduation Rates .....	9
First-Time Freshman Count and Return Rate .....	10
Tusculum Programs of Study .....	11
ACT / SAT Trends (Back Cover)	

## Eleven Year Enrollment History



## Traditional College Enrollment History



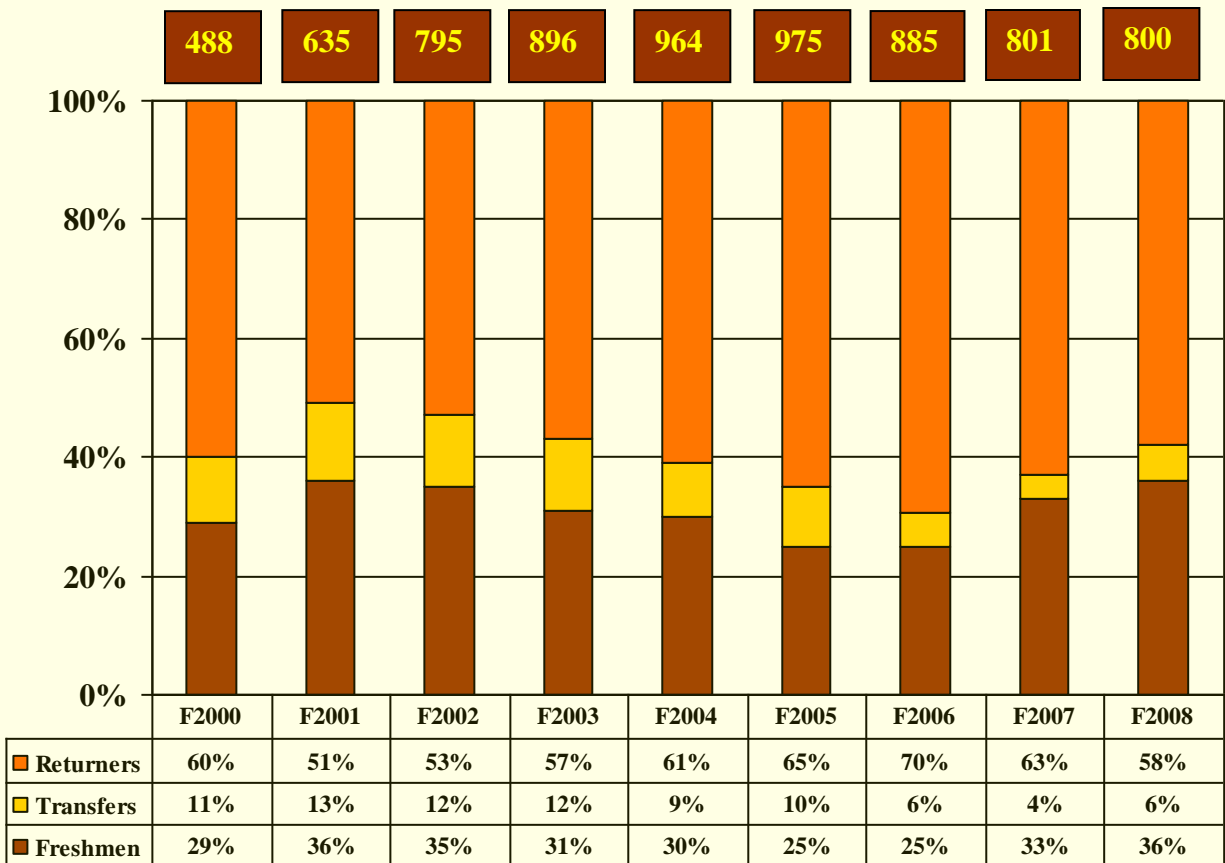
### Official 2008-09 Enrollment

	Headcount	FTE	PT	FT
<b>Overall</b>	2241	2222	29	2212
<b>RC</b>	800	800	0	800
<b>PS</b>	1441	1422	29	1412
<b>Graduate</b>	171	170	1	170
<b>Undergraduate</b>	2070	2051	28	2042

# Enrollment

## Freshmen, Transfers, Returning Students

### Traditional College



# Enrollment History

## Ethnicity and Gender

<b>Professional Studies</b>	<b>2005-06</b>	<b>2006-07</b>	<b>2007-08</b>	<b>2008-09</b>
Total Enrollment	1682	2038	1804	1441
Percent Male	35.5	33.7	30.4	28.5
Percent Female	64.5	66.3	69.6	71.5
Percent Caucasian	90.0	90.6	90.7	92.0
Percent Black	6.4	6.6	6.7	5.6
Percent Other Minority and Unknown	3.6	2.8	2.6	2.4

<b>Traditional College</b>	<b>2005-06</b>	<b>2006-07</b>	<b>2007-08</b>	<b>2008-09</b>
Total Enrollment	975	885	801	800
Percent Male	53.7	53.0	54.2	52.6
Percent Female	46.3	47.0	45.8	47.4
Percent Caucasian	68.8	69.6	68.3	71.3
Percent Black	18.7	19.6	20.0	19.3
Percent Other Minority and Unknown	4.7	4.2	4.7	4.7
Percent NR Alien (International)	7.8	6.6	7.0	4.7

**Traditional College  
2008-09 Geographical Distribution  
31 States and 18 Foreign Countries**

State	Female	Male	Total	Percent of Total Traditional Enrollment
Tennessee	256	204	460	57.5%
Georgia	12	53	65	8.1%
South Carolina	12	33	45	5.6%
North Carolina	16	17	33	4.1%
Virginia	13	18	31	3.9%
Florida	10	17	27	3.4%
Ohio	15	9	24	3.0%
Kentucky	2	6	8	
Alabama	3	4	7	
California	1	6	7	
Maryland	1	6	7	
Texas	4	3	7	
Illinois	4	2	6	
Colorado	4	1	5	
New York	2	3	5	
Pennsylvania	2	1	3	
Indiana	2		2	
Kansas	1	1	2	
New Hampshire	1	1	2	
New Jersey	1	1	2	
Utah	1	1	2	
Wisconsin	2		2	
Arkansas		1	1	
Idaho		1	1	
Louisiana		1	1	
Massachusetts		1	1	
Minnesota	1		1	
Missouri		1	1	
Mississippi		1	1	
Montana		1	1	
Washington	1		1	
<b>Foreign Students</b>				<b>Percent of Total Foreign Enrollment</b>
Canada	5	3	8	20.50%
England		7	7	17.90%
Jamaica	3	1	4	10.30%
Brazil		3	3	7.70%
Argentina		2	2	5.10%
Guatemala		2	2	
Venezuela	2		2	
Australia		1	1	
Croatia		1	1	
Honduras	1		1	
Ireland		1	1	
Mexico		1	1	
Poland	1		1	
Scotland		1	1	
Sweden		1	1	
Switzerland		1	1	
Taiwan		1	1	
Ukraine		1	1	

**2008-09 GEOGRAPHICAL DISTRIBUTION**  
**Traditional College**  
**51 Tennessee Counties**

<u>Tennessee County</u>	<u>Female</u>	<u>Male</u>	<u>Total</u>	<u>Percent of TN Students</u>
Greene	77	51	128	28%
Sullivan	16	16	32	7%
Washington	22	10	32	7%
Cocke	16	9	25	5%
Hawkins	18	7	25	5%
Knox	7	17	24	5%
Hamblen	8	12	20	4%
Sevier	12	6	18	
Davidson	8	9	17	
Hamilton	9	7	16	
Jefferson	11	5	16	
Blount	5	6	11	
Anderson	5	3	8	
Claiborne	3	5	8	
Shelby	2	6	8	
Carter	4	2	6	
Loudon	4	2	6	
Monroe	4	1	5	
Rutherford	3	2	5	
Williamson	1	4	5	
Campbell	2	1	3	
Cumberland	2	1	3	
McMinn		3	3	
Unicoi		3	3	
Hickman	1	1	2	
Lincoln		2	2	
Montgomery	1	1	2	
Rhea	1	1	2	
Robertson		2	2	
Wilson	1	1	2	
Bradley	1		1	
Coffee		1	1	
Dekalb		1	1	
Dyer	1		1	
Fentress	1		1	
Grundy	1		1	
Hancock	1		1	
Hardin		1	1	
Haywood	1		1	
Henderson	1		1	
Johnson	1		1	
Lawrence		1	1	
Macon	1		1	
Marion		1	1	
Marshall		1	1	
Mcnairy	1		1	
Morgan	1		1	
Roane	1		1	
Sumner		1	1	
Union		1	1	
Warren	1		1	
<b>TOTAL</b>			<b>460</b>	

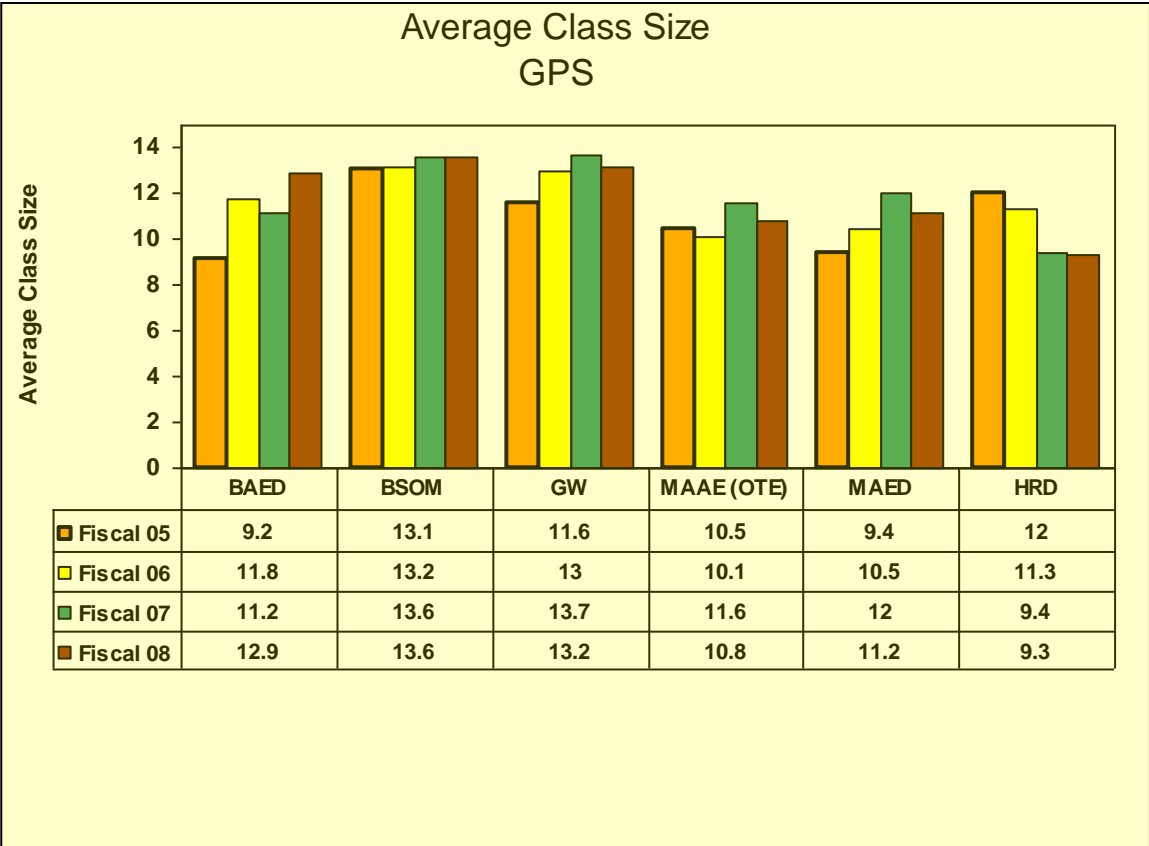
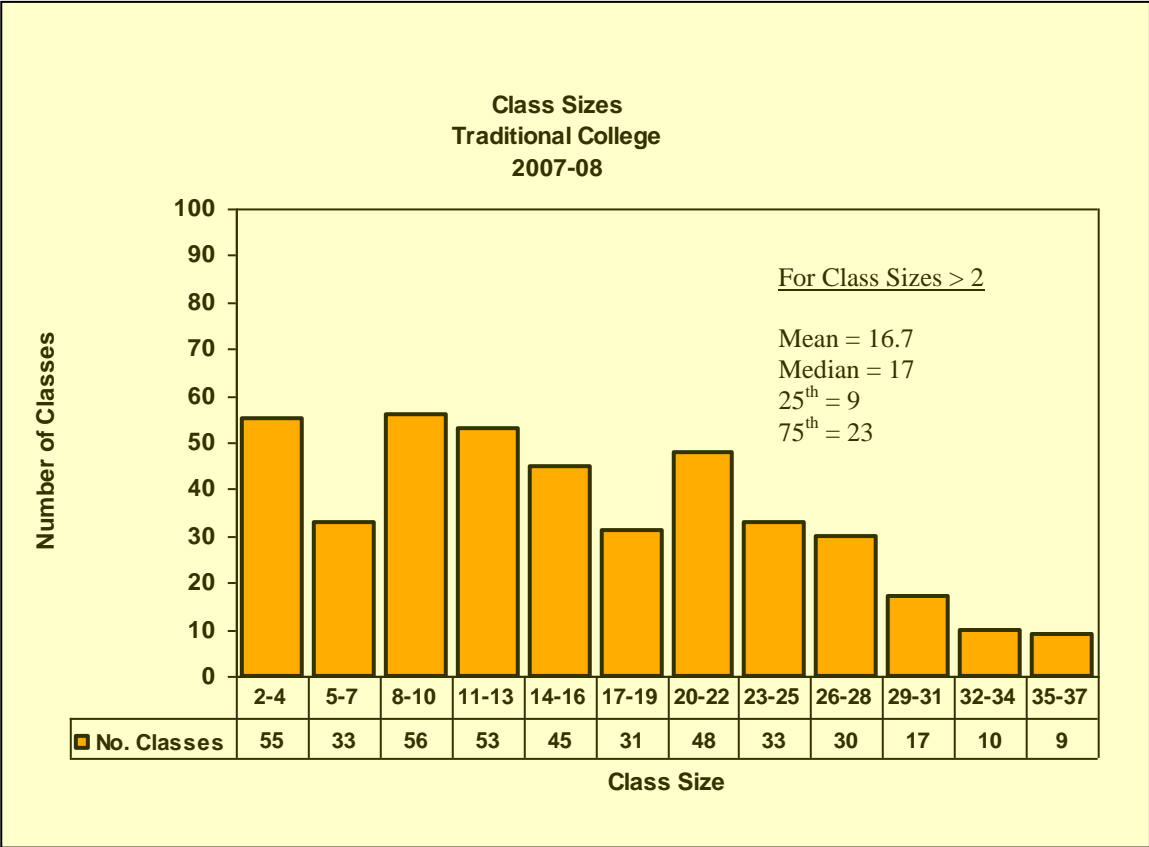
## 2008-09 GEOGRAPHICAL DISTRIBUTION

### Graduate & Professional Studies – Tennessee Counties

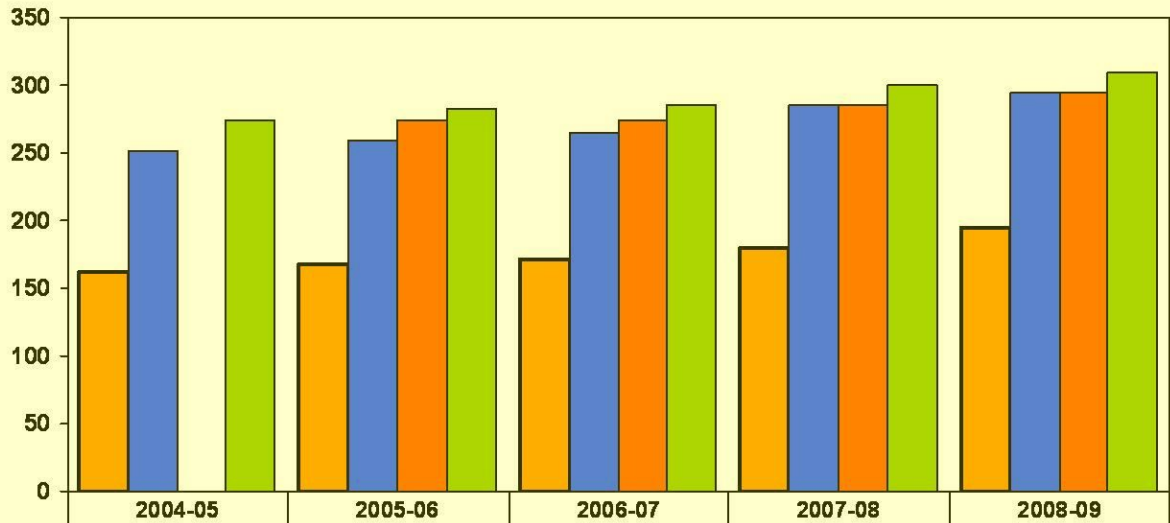
<u>County</u>	<u>Female</u>	<u>Male</u>	<u>Total</u>	<u>Percent of Total GPS Enrollment</u>
Knox	241	122	363	25.2%
Greene	138	50	188	13.0%
Hamblen	99	31	130	9.0%
Blount	68	38	106	7.4%
Washington	51	20	71	4.9%
Cocke	47	17	64	4.4%
Anderson	44	15	59	4.1%
Hawkins	41	18	59	4.1%
Jefferson	46	12	58	4.0%
Claiborne	40	8	48	
Sevier	38	8	46	
Loudon	29	12	41	
Sullivan	23	12	35	
Grainger	24	10	34	
Roane	23	7	30	
Campbell	19	7	26	
Monroe	11	4	15	
Morgan	9	1	10	
Hancock	7	2	9	
Carter	6	2	8	
Unicoi	6	1	7	
Union	6		6	
McMinn	4	1	5	
Rhea	2	1	3	
Bradley	1	1	2	
Bledsoe		1	1	
Cumberland		1	1	
Davidson		1	1	
Hamilton		1	1	
Johnson	1		1	
McNairy		1	1	
Polk	1		1	
Other States	5	6	11	
<b>TOTAL</b>			<b>1441</b>	



# Class Size

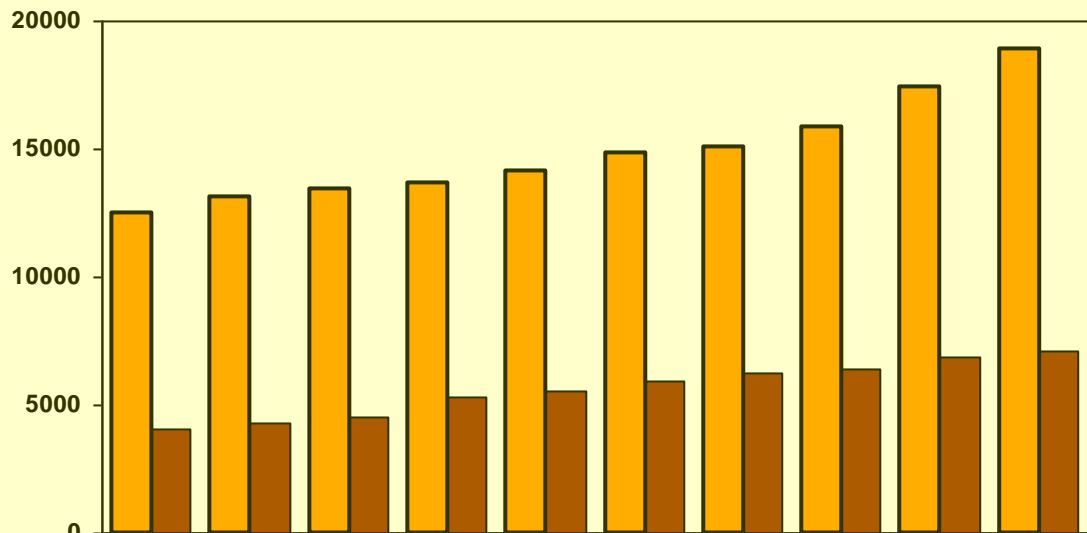


### GPS Tuition Cost per Semester Hour



Gateway	162	167	172	180	195
BSOM	252	260	265	285	295
BAED		275	275	285	295
Graduate	275	283	285	300	310

### Tuition, Room & Board Traditional College

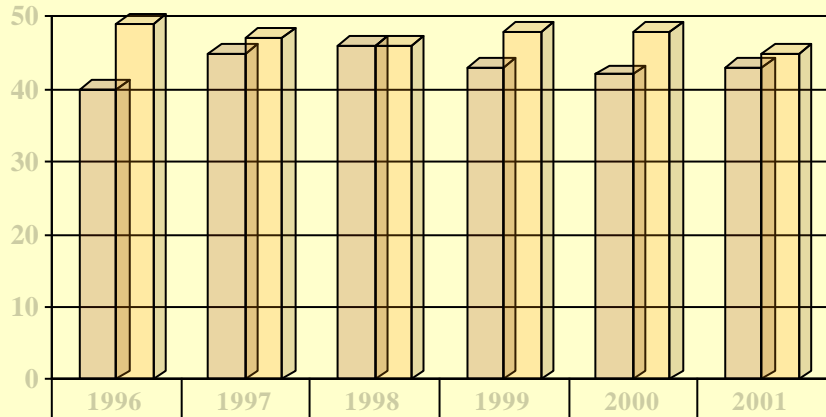


Tuition	12500	13100	13400	13700	14110	14810	15100	15855	17385	18870
Room & Board	4100	4300	4500	5290	5580	5950	6230	6370	6910	7120

### Traditional Students Cohort Graduation Rates (Percent of Cohort Graduated)

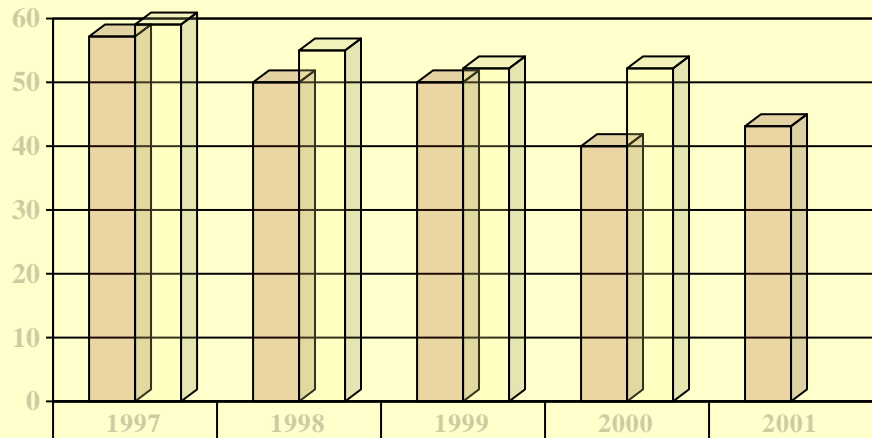
Peers

- Carson-Newman
- Catawba
- Ferrum
- King College
- Lees-McRae
- Lenoir-Rhyne
- Linclon Memorial
- Mars Hill
- Maryville
- Milligan College
- Newberry
- Virginia Intermont
- Wingate



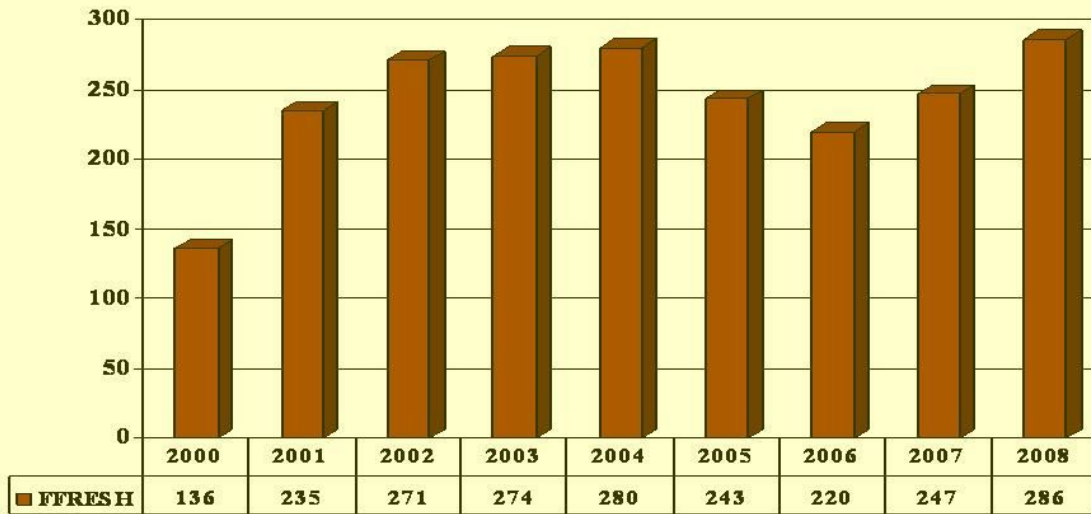
TC 6 Year Graduation Rate	40	45	46	43	42	43
Peer Avg 6 Year Graduation Rate	49	47	46	48	48	45

### Traditional Students Athletic Cohort Graduation Rates (Percent of Cohort Graduated)

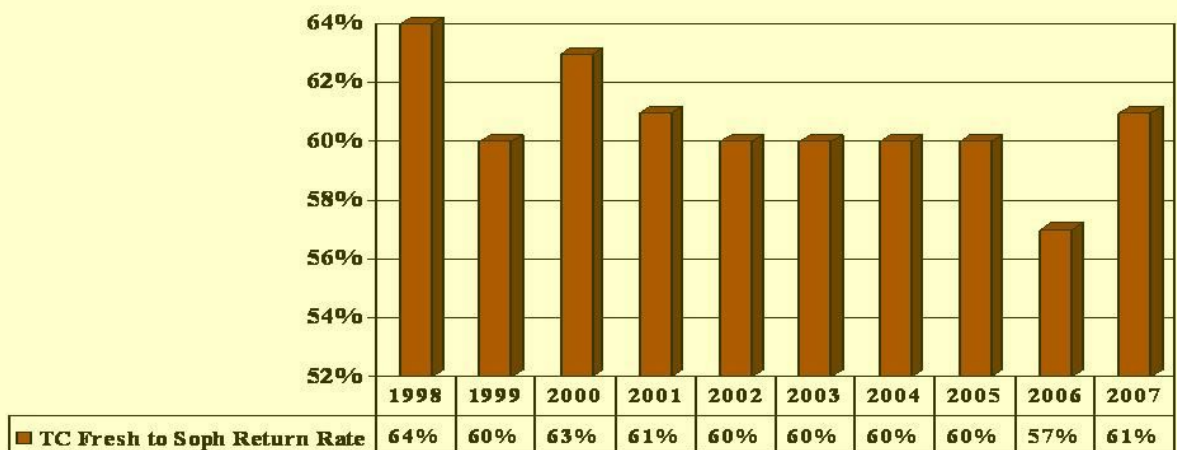


TC 6 Year Athlete Grad Rate	57	50	50	40	43
SAC 6 Year Grad Rate	59	55	52	52	

**Traditional College  
Fall First-Time Freshmen by Cohort Year**



**Cohort Return Rate x Cohort Year  
Fall Freshmen Returning For Sophomore Year**



## Tusculum College Programs of Study 2007-08 Majors (and Concentrations)

Art & Design	Environmental Science
a. Studio Art	Field Guide/Naturalist
b. Graphic Design	Film & Broadcasting
Athletic Training	a. Video
Biology	b. Radio
a. Pre-Med	c. Sports Broadcasting
b. Pre-Pharmacy	d. Broadcast News
c. Pre-Physical Therapy	History
Business Administration	Mathematics
a. General Management	a. Computer Info Systems
b. Management Accounting	Medical Technology
c. Information Technology	Museum Studies
d. Economics	Physical Education (Non-Teaching)
English	Political Science
a. Literature	Psychology
b. Creative Writing	Sport Management
c. Journalism	Sport Science
d. Professional Writing	

In addition to the above majors and concentrations, Tusculum offers an independent major (multi-discipline program of study)

### Tusculum College offers Five categories of teacher licensure programs:

#### 1. Pre-Secondary Education

Early Childhood Education PreK-3  
Elementary Education K-6

#### 2. Secondary Education

Biology 7-12  
English 7-12  
History 7-12  
Mathematics 7-12  
Psychology 9-12  
Government 7-12  
Business 7-12

#### 3. K-12 Education

Physical Education K-12  
Health & Wellness K12  
Visual Arts K-12

#### 4. Special Education

Special Education Modified and  
Comprehensive K-12  
Special Education Early Childhood

#### 5. Middle Grades Education 4-8

### Minors

Art, Biology, Chemistry, Civic Engagement, Coaching, Computer Information Systems, Economics, English, Environmental Science, History, International Business, Journalism, Mass Media, Mathematics, Management, Museum Studies, Political Science, Psychology, Religion, Writing, and the following minors in Education: English, History, Early Childhood Education, Elementary Education, Mathematics, Special Education Early Childhood, and Special Education Modified & Comprehensive.

### Other Disciplines

Tusculum College also offers additional courses in the following disciplines: Geology, Geography, Music, Physics, Sociology, Spanish, and Theatre.

### Graduate and Professional Studies Programs for Working Adult Students

Gateway Program  
Bachelor of Science in Organizational Management  
(With Add-On Concentrations in Human Resource Management and Marketing)  
Bachelor of Arts in Education – K-6  
Master of Arts in Education – K-12, Organizational Training and Education,  
& Human Resource Development

Traditional College – Entering Class  
ACT / SAT Trends

	Fall 2004	Fall 2005	Fall 2006	Fall 2007	Fall 2008
ACT	20.0	20.8	21.5	22	22
SAT	925	959	965	986	1010