

TUSCULUM C O L L E G E



2006-07 FACT BOOK



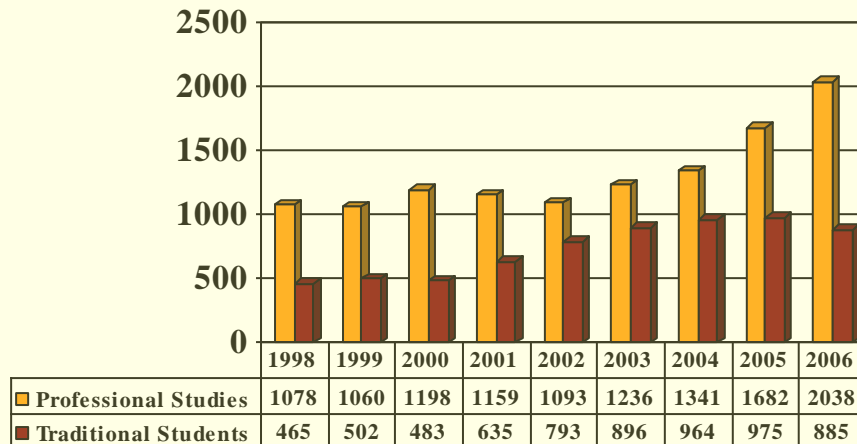
Tusculum College

FACT BOOK

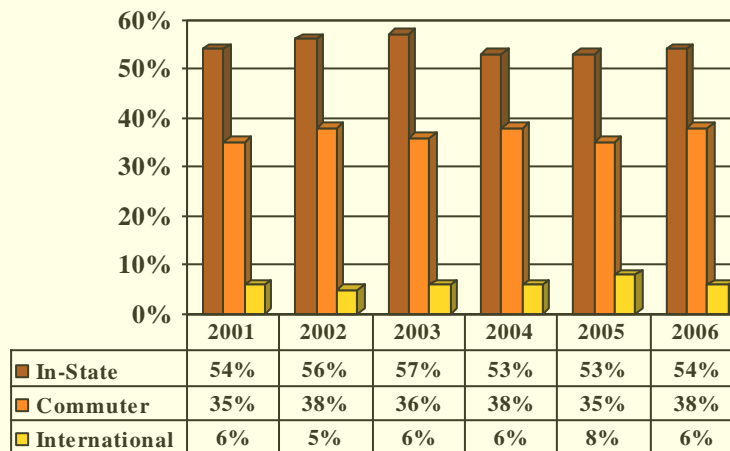
College Statistics 2006-07

Enrollment History	2
Enrollment by Student Status	3
Ethnicity and Gender	4
Traditional Student by State & Foreign Country	5
Traditional Student by Tennessee County	6
Professional Studies Student by County and State	7
Class Size Distribution	8
Age Distribution	9
Traditional Program – Graduation Rates and Tuition History	10
Tusculum Programs of Study	11

Eight Year Enrollment History



Residential College Enrollment History



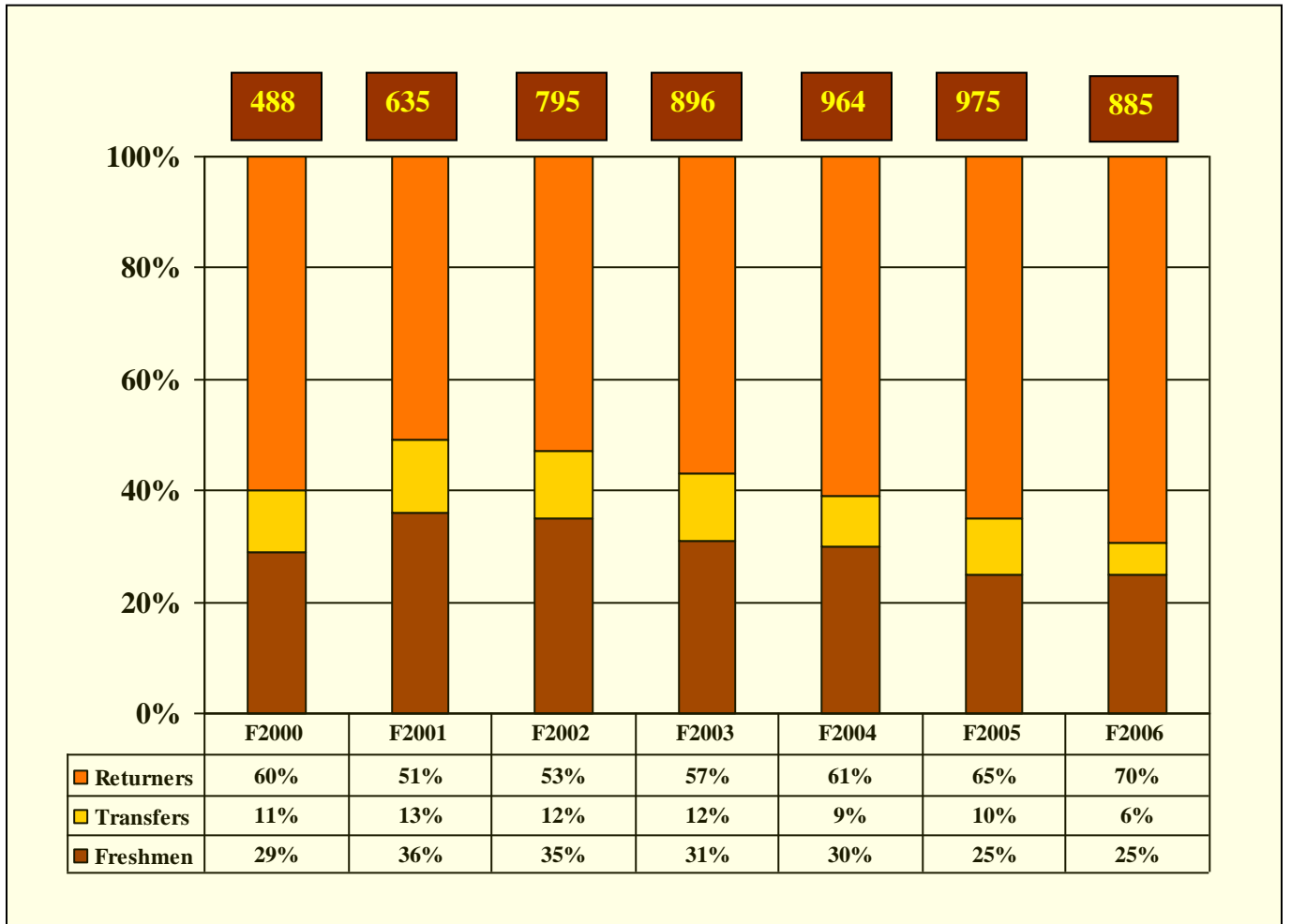
Official 2006-07 Enrollment

	Headcount	FTE	PT	FT
Overall	2923	2885	57	2866
RC	885	880	7	878
PS	2038	2005	50	1988
Graduate	320	318	3	317
Undergraduate	2603	2567	54	2549

Enrollment

Freshmen, Transfers, Returning Students

Residential College



Enrollment History

Ethnicity and Gender

Professional Studies

	2003-04	2004-05	2005-06	2006-07
Total Enrollment	1236	1341	1682	2038
Percent Male	40.3	37.5	35.5	33.7
Percent Female	59.7	62.5	64.5	66.3
Percent Caucasian	89.6	89.4	90.0	90.6
Percent Black	6.7	7.0	6.4	6.6
Percent Other Minority and Unknown	3.7	3.6	3.6	2.8

Residential College (Traditional Day program)

	2003-04	2004-05	2005-06	2006-07
Total Enrollment	896	964	975	885
Percent Male	52.7	56.0	53.7	53.0
Percent Female	47.0	44.0	46.3	47.0
Percent Caucasian	75.0	71.1	68.8	69.6
Percent Black	16.0	19.8	18.7	19.6
Percent Other Minority and Unknown	3.2	2.9	4.7	4.2
Percent NR Alien (International)	5.8	6.2	7.8	6.6

2006-07 GEOGRAPHICAL DISTRIBUTION
Residential College - Traditional Day Students
36 States and 19 Foreign Countries

<u>State</u>	<u>Male</u>	<u>Female</u>	<u>Total</u>	<u>Percent of Total RC Enrollment</u>
Tennessee	194	275	469	53.0%
Georgia	61	13	74	8.4%
Virginia	26	14	40	4.5%
South Carolina	43	9	52	5.9%
Florida	17	10	27	3.1%
Ohio	9	19	28	3.2%
North Carolina	19	15	34	3.8%
California	9	6	15	1.7%
Alabama	11	1	12	
Kentucky	6	7	13	
Illinois	2	3	5	
Maryland	3	1	4	
Louisiana	2	0	2	
New Jersey	2	1	3	
Arizona	0	5	5	
Michigan	3	1	4	
Arkansas	1	0	1	
Colorado	2	4	6	
Pennsylvania	3	0	3	
Texas	1	3	4	
Massachusetts	2	0	2	
Vermont	2	1	3	
Connecticut	1	0	1	
Idaho	1	0	1	
Kansas	1	1	2	
Minnesota	0	1	1	
Missouri	1	0	1	
Nevada	1	0	1	
New York	3	3	6	
Puerto Rico	2	0	2	
Utah	0	2	2	
Washington	0	1	1	
Hawaii	0	1	1	
Indiana	0	1	1	
New Hampshire	1	0	1	
Wisconsin	0	1	1	
International Students				
Canada	9	5	14	
Jamaica	7	7	14	
England	3	0	3	
India	0	1	1	
Venezuela	3	2	5	
Australia	0	1	1	
Belgium	1	0	1	
Brazil	3	1	4	
Honduras	0	2	2	
Switzerland	1	0	1	
Nepal	1	1	2	
Sweden	2	0	2	
Trinidad	1	0	1	
Columbia	1	1	2	
Ireland	1	0	1	
Poland	0	1	1	
Portugal	1	0	1	
S. Africa	0	1	1	
St. Kitts	0	1	1	
Total (International)			58	
Total (All Students)			885	

2006-07 GEOGRAPHICAL DISTRIBUTION Residential College - Traditional Day Students

49 Tennessee Counties

<u>Tennessee County</u>	<u>Male</u>	<u>Female</u>	<u>Total</u>	<u>Percent of TN Students</u>
Greene	65	105	170	36.2%
Washington	9	25	34	7.3%
Hamblen	19	13	32	6.8%
Sullivan	14	14	28	6.0%
Hawkins	7	20	27	5.8%
Cocke	9	15	24	5.1%
Sevier	7	10	17	3.6%
Knox	12	6	18	3.8%
Anderson	5	8	13	
Hamilton	6	3	9	
Jefferson	1	6	7	
Blount	2	5	7	
Claiborne	3	3	6	
Grainger	0	5	5	
Davidson	1	2	3	
Carter	1	5	6	
Rutherford	2	0	2	
Shelby	2	4	6	
Cumberland	2	1	3	
Montgomery	1	0	1	
Roane	0	1	1	
Morgan	0	1	1	
Fentress	0	3	3	
Hancock	1	1	2	
Bristol	0	1	1	
Crockett	1	0	1	
Rhea	1	2	3	
Williamson	2	1	3	
Bradley	1	2	3	
McMinn	1	0	1	
Unicoi	2	1	3	
Decatur	1	0	1	
Coffee	1	0	1	
Loudon	2	3	5	
Campbell	0	1	1	
Dyer	0	1	1	
Monroe	6	1	7	
Giles	1	0	1	
Grundy	0	1	1	
Lincoln	1	0	1	
Putnam	0	1	1	
Scott	1	0	1	
Johnson	1	0	1	
Macon	0	1	1	
Maury	1	0	1	
Meigs	0	1	1	
Tipton	0	1	1	
Troup	1	0	1	
Union	1	1	2	
TOTAL	194	275	469	

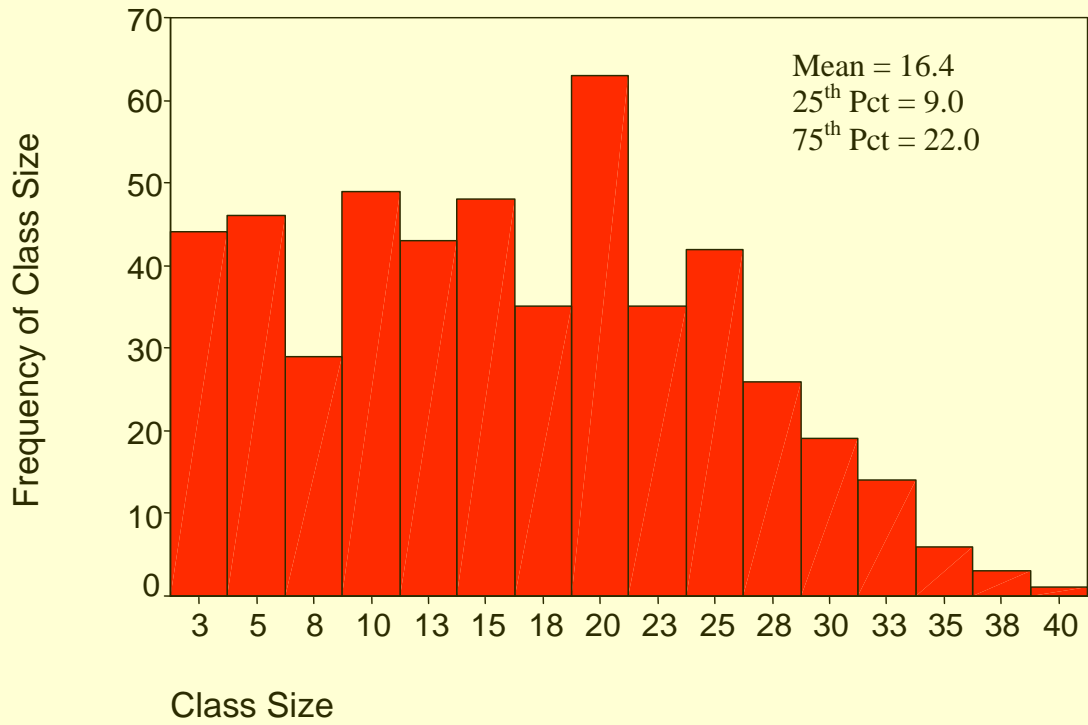
2006-07 GEOGRAPHICAL DISTRIBUTION

Professional Studies – Tennessee Students

<u>County</u>	<u>Male</u>	<u>Female</u>	<u>Total</u>	<u>Percent</u>
Knox	205	372	577	28.3
Greene	68	152	220	10.8
Hamblen	46	125	171	8.4
Blount	56	87	143	7.0
Anderson	28	78	106	5.2
Washington	40	56	96	4.7
Jefferson	28	57	85	4.2
Sullivan	28	45	73	3.6
Sevier	21	49	70	3.4
Hawkins	17	41	58	2.8
Grainger	22	34	56	2.7
Loudon	16	37	53	2.6
Cocke	15	36	51	2.5
Roane	18	29	47	2.3
Claiborne	11	29	40	2.0
Monroe	10	29	39	
Campbell	12	25	37	
Carter	6	12	18	
Morgan	7	10	17	
Hancock	4	10	14	
McMinn	6	8	14	
Bradley	3	6	9	
Scott	3	4	7	
Unicoi	1	4	5	
Union	3	2	5	
Meigs	1	3	4	
Cumberland	1	2	3	
Hamilton	1	1	2	
Johnson	0	2	2	
Bledsoe	1	0	1	
Davidson	1	0	1	
Putnam	1	0	1	
Shelby	0	1	1	
Other States	5	7	12	
TOTAL	685	1353	2038	

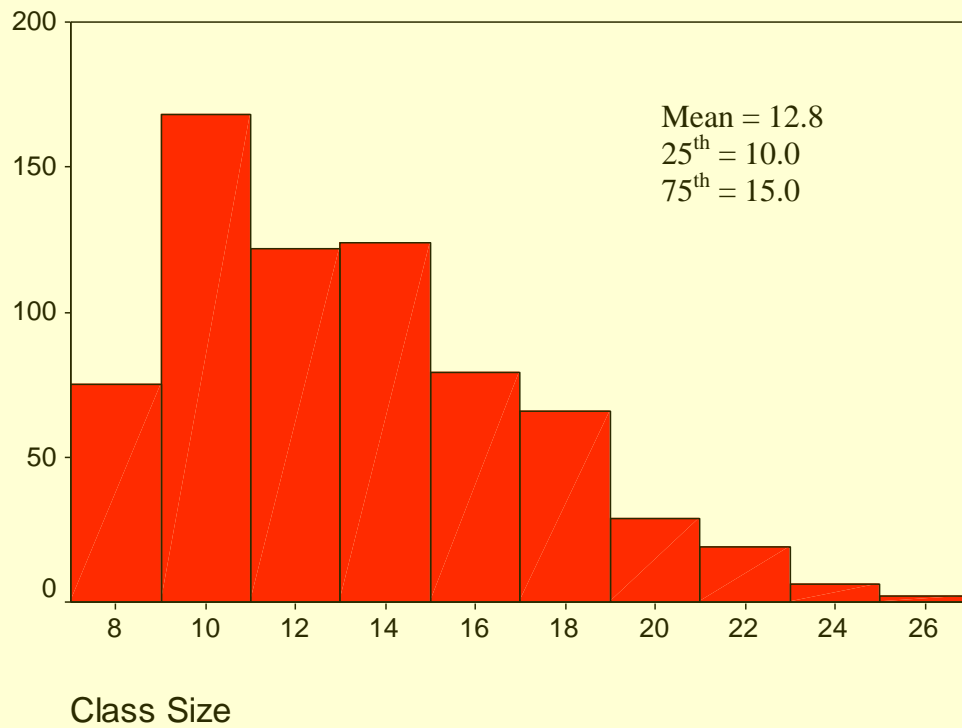
Residential College

Class Size Distribution 2005-06

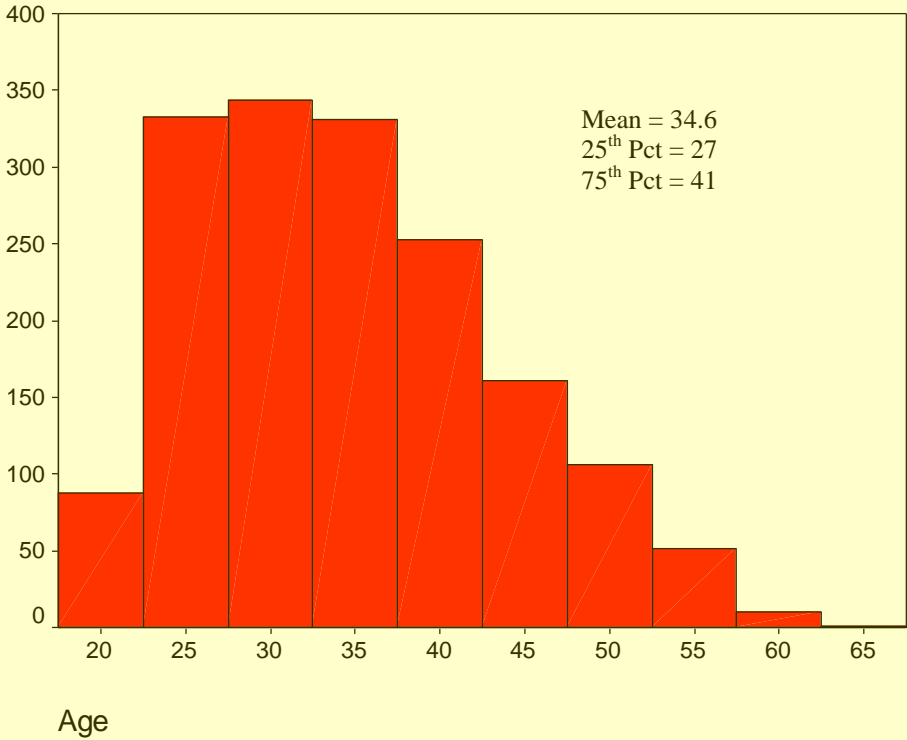


Professional Studies

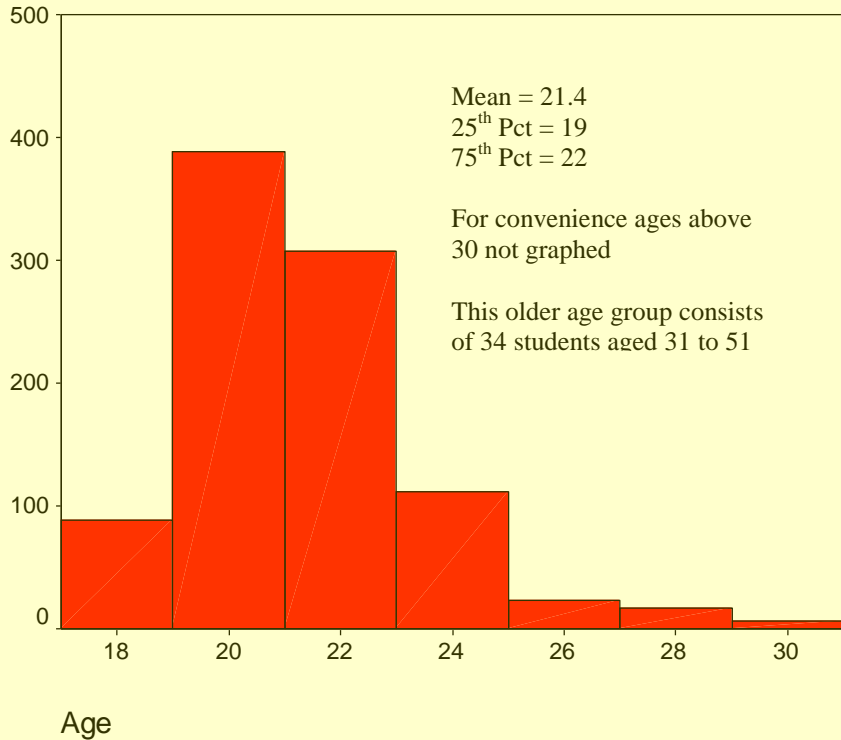
Class Size Distribution - Fiscal Year 2004-05



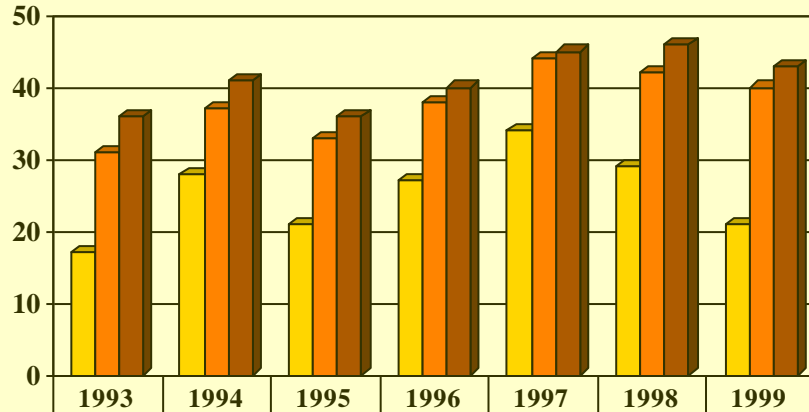
Professional Studies Student Age Distribution 2005-06



Residential College Student Age Distribution 2005-06

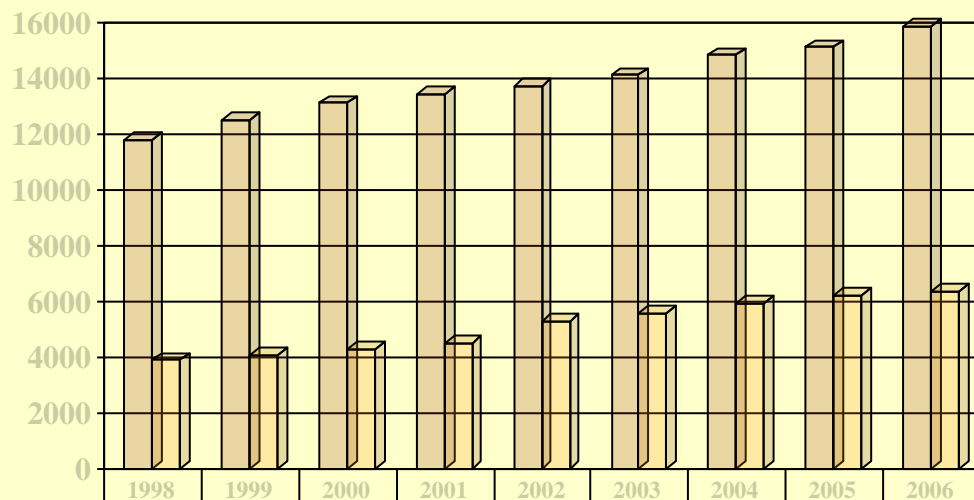


**Traditional Students
Cohort Graduation Rates
(Percent of Cohort Graduated)**



4 Year Graduation Rate	17	28	21	27	34	29	21
5 Year Graduation Rate	31	37	33	38	44	42	40
6 Year Graduation Rate	36	41	36	40	45	46	43

**Tuition, Room & Board
Traditional Program**



Tuition	11800	12500	13100	13400	13700	14110	14810	15100	15855
Room & Board	3900	4100	4300	4500	5290	5580	5950	6230	6370

Tusculum Programs of Study 2006-07

Majors for Traditional Students Leading to the Bachelor of Arts Degree

1. Athletic Training
2. Biology
3. Business Administration
 - a. General Management
 - b. Management Accounting
 - c. Information Technology Conc
4. English
5. English with Writing Concentration
6. English with Journalism Concentration
7. Environmental Science
8. Field Guide/Naturalist
9. History
10. Mass Media
 - a. Radio Sports Broadcasting
 - b. Television Sports Broadcasting
11. Mathematics
12. Mathematics / Computer Science Conc.
13. Medical Pre-Professional
14. Medical Technology
15. Museum Studies
16. Physical Education
17. Political Science
18. Pre-Pharmacy
19. Psychology
20. Sport Management
21. Sport Science
22. Visual Arts
 - a. Fine Arts
 - b. Graphic Design

Tusculum College offers four categories of teacher licensure programs:

1. Pre-Secondary Education

Early Childhood Education PreK-4
Elementary Education K-6

2. Secondary Education

Biology 7-12
English 7-12
History 7-12
Mathematics 7-12
Psychology 9-12

3. K-12 Education

Physical Education K-12
Visual Arts K-12

4. Special Education

Special Education Modified and
Comprehensive K-12
Special Education Early Childhood

Minors

Biology, Chemistry, Coaching, Computer Information Systems, English, Environmental Science, History, Journalism, Mass Media, Mathematics, Management, Museum Studies, Political Science, Psychology, Religion, Visual Arts, and the following minors in Education: English, History, Early Childhood Education, Elementary Education, and Special Education Modified & Comprehensive.

Other Disciplines

Tusculum College also offers additional courses in the following disciplines:
Dance, Geography, Humanities, Music, Natural Science, Physics, Sociology, and Theatre.

Graduate and Professional Studies Programs for Working Adult Students

Gateway Program
Bachelor of Science in Organizational Management
(With Add-On Concentrations in Human Resource Management and Marketing)
Bachelor of Arts in Education – K-6
Master of Arts in Organizational Management
Master of Arts in Education – K-12, Organizational Training and Education,
& Human Resource Development