



TUSCULUM COLLEGE

Fact Book
2014 - 2015

Tusculum College

Fact Book

College Statistics 2014-2015

Enrollment History

Ten Year Fall Enrollment History.....	1
Traditional College Enrollment History.....	1
Official 2013-14 Fall Enrollment.....	1
Declared Majors by Year.....	2
Declared Majors by Class Code.....	3
GPS Enrollments by Site.....	4
GPS Enrollment by Program, Location and Fall Terms.....	5
Graduation Counts by Major	6
Ethnicity and Gender.....	7
Enrollment by Student Status (Traditional College)	8

2013-14 Geographical Distribution

Traditional Student by State & Foreign Country.....	9
Traditional Student by Tennessee County.....	10
Professional Studies Student by County.....	11

Class Size

Traditional College.....	12
Graduate and Professional Studies.....	12
Hybrid-Online Enrollments.....	13

Tuition

Graduate and Professional Studies.....	14
Traditional College.....	14

Graduation Rates

Cohort Graduation Rates.....	15
Athlete Cohort Graduation Rates.....	16

Freshman Rates

First-Time Freshman Count.....	17
Freshman Return Rate.....	17

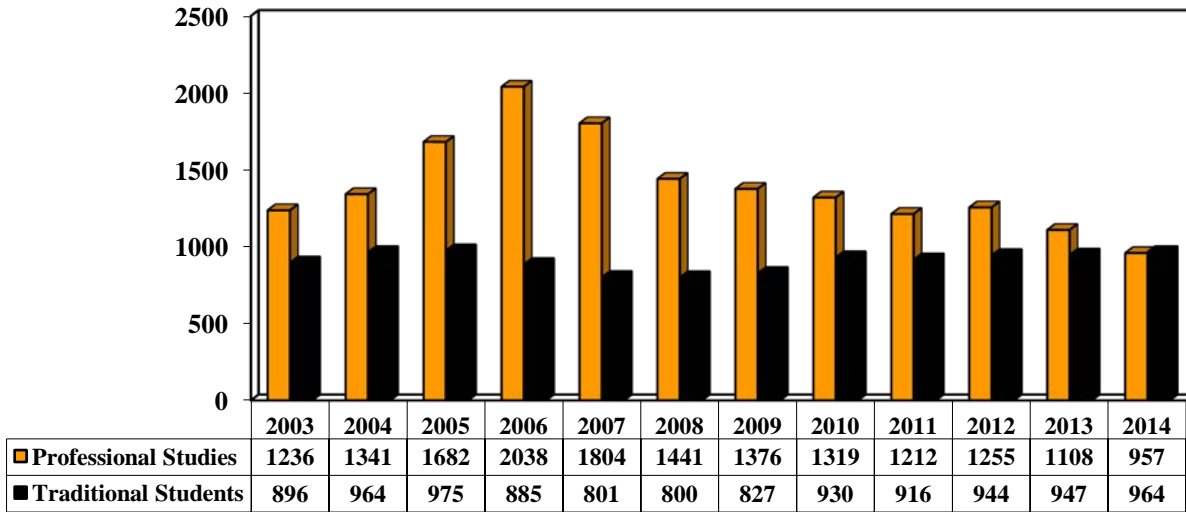
SAT / ACT Trends of Traditional College Entering Class

SAT Trends.....	18
ACT Trends.....	18

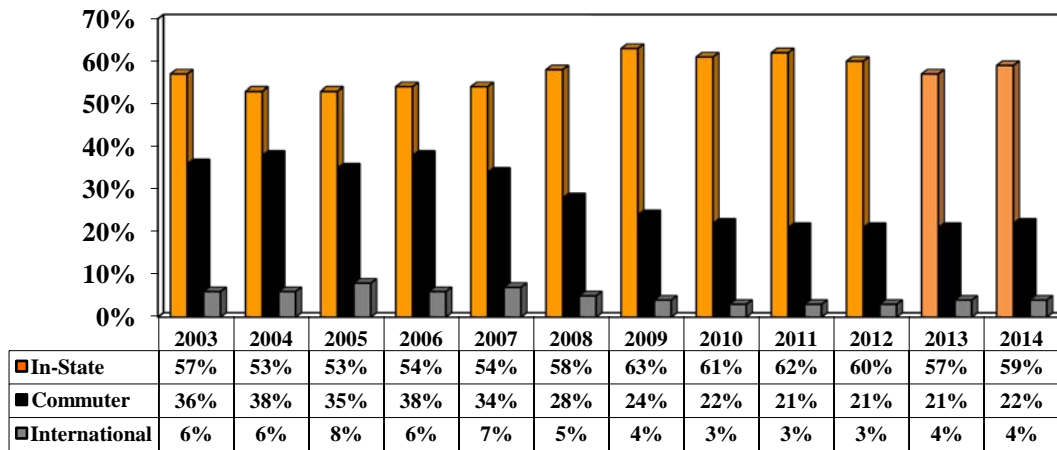
Tusculum Programs of Study.....	Back Cover
---------------------------------	------------

Enrollment History

Ten Year Fall Enrollment History



Traditional College Enrollment History



Official 2014-15 Fall Enrollment

	Headcount	FTE	PT	FT
RC	964	958	9	955
GPS-Undergraduate	782	696	129	653
Total Undergraduate	1746	1654	138	1608
Graduate	175	132	64	111
Overall	1921	1786	202	1719

Enrollment History

Declared Majors by Year

(Fall Enrollment Census)

PROGRAM	08-09	09-10	10-11	11-12	12-13	13-14	14-15	DESCRIPTION AND NOTES
ART	18	19	23	26	23	26	32	Graphics and Studio Art
ATEP	11	7	10	15	24	54	43	Athletic Training (includes PPT for last 2 years)
BIOL	47	59	71	68	61	66	47	Biology
BUSN	78	79	84	87	96	102	128	Campus Business
CHEM							2	Chemistry
CRJU						29	41	Criminal Justice
EDK3	6	9	13	12	9	8	7	Early Child Education
EDK6	39	42	47	45	38	31	23	Education K-6
EDK8	4						0	Education K-8
EDKM 4-8	1	3	3	6	5	7	6	Education Middle School
EDUC 7-12	23	32	28	28	35	21	13	Biology, English, History, Math, Business. Government Education
EDUC K-12	28	28	33	32	29	23	15	Phys Educ Education, Phys Educ Health and Wellness, Art Educ
EDUC 9-12	1			2		1	0	Psychology Education
ENGL	15	23	32	46	40	40	35	English
EVSC	3	5	5	6	8	7	10	Environmental Science
FGNP	5	2	3	5	4	8	4	Field Guide/Naturalist
HIST	6	9	8	10	9	14	17	History
INDE	3		1	1	3	0	0	Independent Major
MATH	1	4	3	5	6	9	6	Mathematics
MATHCS	9	3	6	9	7	7	2	Mathematics/Computer Science
MEDTE	1	1	2		1	1	0	Medical Tech
MUSE	3	7	8	7	12	11	12	Museum Studies
POLSC	5	9	15	19	20	18	13	Political Science
PHED							0	Physical Education Coaching and Leisure
PSYC	21	26	24	26	40	40	33	Psychology
SPED	11	12	8	7	6	6	9	Special Education
SPSC	22	16	17	23	34	39	39	Sports Science
SPTMG	58	54	58	56	66	70	69	Sport Management
UNKN	368	367	412	349	318	223	287	Unknown/Undeclared Major
NURS					28	66	71	Nursing
UNKN GW	8	7	10	4	7	7	8	Unknown/Undeclared Major Gateway
PSYC GW				46	49	42	44	Psychology Major Gateway (BP)
EDUC GW	279	295	244	190	144	112	94	Education Major Gateway (BAED)
CRJU GW							2	Criminal Justice Gateway
BUSN GW	200	211	198	171	168	162	138	Business Major Gateway (BSOM, BSBA)
BAED	243	188	183	158	146	111	77	EDK-6 Undergrad GPS
BSOM/ BSM	539	494	426	295	263	177	190	Bachelor of Science Management GPS
BSBA			31	119	170	174	144	Bachelor of Business Administration GPS
BP				14	87	112	85	Bachelor Psychology GPS
MAT			11	28	51	38	22	Masters in Teaching GPS
MAED	95	86	129	108	76	51	44	Masters Curriculum & Instruction GPS
MAOM		6	13	7		0	0	Masters Organizational Management GPS
OTE	27	40	27	9	10	7	0	Masters Organizational Training GPS
MBA					27	60	58	Masters Business Administration GPS
MHRD	50	49	49	63	57	55	51	Masters Human Resource Development GPS
Total	2241	2203	2249	2128	2199	2055	1921	Total Fall Enrollment

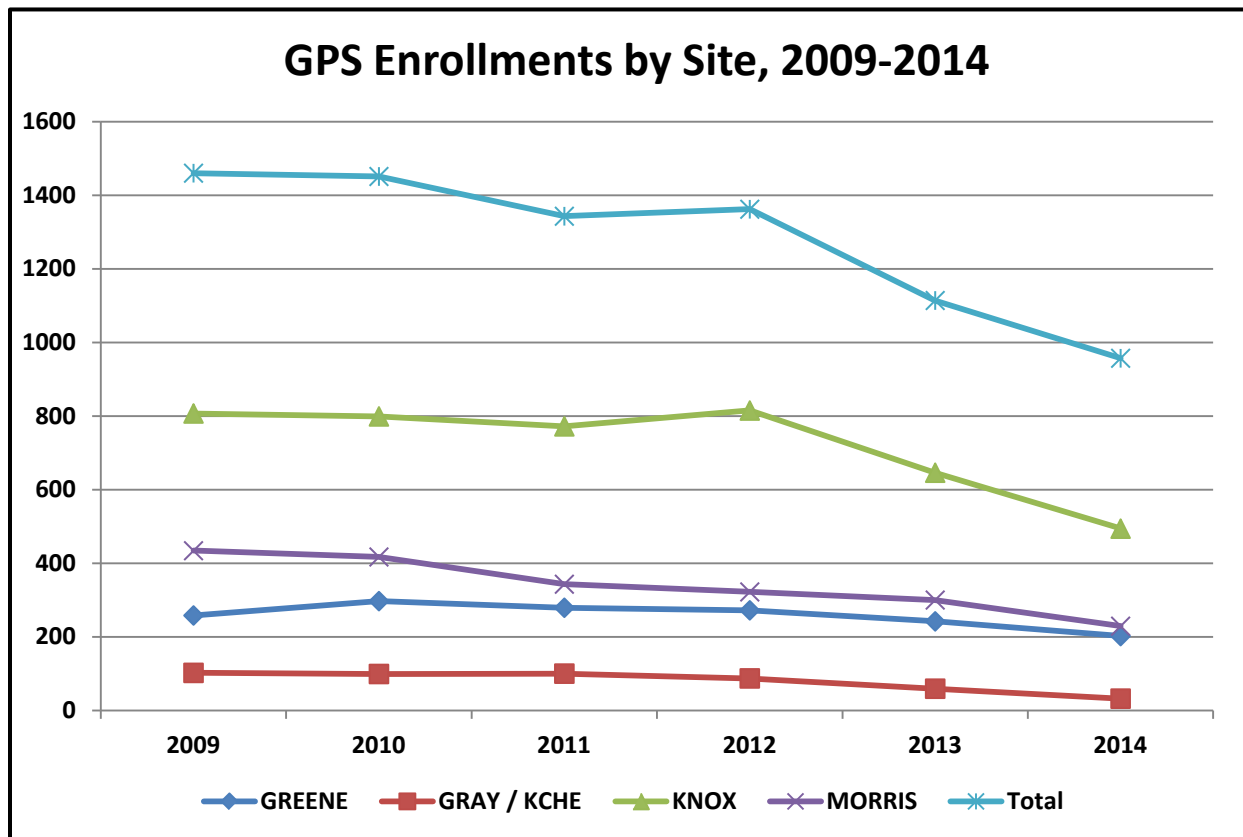
Enrollment History

Declared Majors by Class Code Residential College Fall 2014-15

	FRESH	SOPH	JUN	SEN	Grand Total
ART	3	1	7	9	20
ATEP	6	4	5	6	21
ATEP PPT	9	9	2	2	22
BIOL	7	17	9	14	47
BUSN	16	34	36	42	128
CHEM	1	1			2
CRJU	10	14	14	3	41
DIGM	4		1	7	12
EDUC	10	11	21	31	73
ENGL	9	9	6	11	35
EVSC	3	5		2	10
FGNP	1	1		2	4
HIST	3	6	3	5	17
INDE					
MATH		3		3	6
MATHCS	1	1			2
MEDTE					
MUSE	1	3	4	4	12
NURS	6	18	17	30	71
POLSC	2	4	2	5	13
PSYC	4	13	7	9	33
SPSC	6	9	8	16	39
SPTMG	10	12	22	25	69
UNKN	253	34			287
Grand Total	365	209	164	226	964

GPS Enrollments by Site 2009-2014

GPS Enrollments by Site, 2009-2014						
	2009	2010	2011	2012	2013	2014
GREENE	258	297	279	272	242	202
GRAY / KCHE	102	99	100	87	59	32
KNOX	807	799	772	815	646	494
MORRIS	434	417	343	322	300	229
Total	1460	1451	1343	1362	1114	957



GPS Enrollment by Program, Location, and Fall Terms

	Location	BAED	BP	BSM	BSBA	GW	MAED	MAT	MBA	MHRD	MAAE	MAOM	Total Program Enroll	Total Students
2014	GREENE	15	21	32	21	64	11	13	3	26	0	0	206	206
	GRAY / KCHE	1		7	5	8	1			2	0	0	24	24
	KNOX	39	26	104	105	123	16	8	48	19			488	488
	MORRIS	36	34	24	21	86	18		6		0	0	225	225
Program Totals		91	81	167	152	281	46	21	57	47	0	0	Total Students	943
													Official Fall Enroll	957
2013	GREENE	11	29	21	21	94	16	16	13	21	0	0	242	213
	GRAY / KCHE	0	3	16	12	22	0	0	0	6	0	0	59	53
	KNOX	62	44	110	119	205	16	23	39	28	0	0	646	585
	MORRIS	54	47	34	30	111	24	0	0	0	0	0	300	263
Program Totals		127	123	181	182	432	56	39	52	55	0	0	Total Students	1114
													Official Fall Enroll	1108
2012	GREENE	19	24	40	17	108	19	22	0	14	9	0	272	256
	GRAY	0	4	20	28	22	6	0	0	7	0	0	87	87
	KNOX	59	38	243	106	253	30	28	25	33	0	0	815	723
	MORRIS	69	25	56	29	122	21	0	0	0	0	0	322	296
Program Totals		147	91	359	180	505	76	50	25	54	9	0	Total Students	1362
													Official Fall Enroll	1255
2011	GREENE	27	1	46	10	136	31	6	0	14	8	0	279	260
	GRAY	0	0	26	12	41	21	0	0	0	0	0	100	94
	KNOX	80	0	252	89	258	27	12	0	47	1	6	772	672
	MORRIS	77	1	55	27	147	34	0	0	0	0	2	343	317
Program Totals		184	2	379	138	582	113	18	0	61	9	8	Total Students	1343
													Official Fall Enroll	1212
2010	GREENE	26	0	56	0	171	37	0	0	0	7	0	297	281
	GRAY	0	0	31	0	37	23	0	0	0	8	0	99	97
	KNOX	106	0	287	41	255	31	14	0	43	12	10	799	692
	MORRIS	64	0	69	16	206	48	0	0	8	3	3	417	381
Program Totals		196	0	443	57	669	139	14	0	51	30	13	Total Students	1451
													Official Fall Enroll	1319

Note: Program totals do not match student totals since some students were enrolled in more than one program and attended more than one location

Enrollment History

Graduation Counts

Major and Year

	2008-09	2009-10	2010-11	2011-12	2012-13	2013-14	Total
Art	3	6	6	11	6	4	36
Athletic Training	4		5	1	3	5	18
Biology	14	13	14	22	16	8	87
Education RC (All Concentrations)	26	28	26	40	39	15	174
Business (RC)	26	23	18	19	26	23	135
Digital Media (F&B)	4	2		1	8	6	21
English	6	2	4	11	15	11	49
Environmental Science	1	2	2	1	3	1	10
Field Guide/Naturalist	3		1			3	7
History	2	4	2	2		2	12
Mathematics		2		1	3	3	9
Mathematics/Computer Science	4				2	3	9
Museum Studies	1	2		2	6	1	12
Political Science		2		3	2	9	16
Psychology (RC)	10	7	4	5	7	12	45
Sports Science	11	5	6	2	18	14	56
Sport Management	18	13	13	11	8	18	81
Total RC	133	111	101	132	162	138	777
Education K-6 (BAED) (GPS)	141	93	102	85	68	72	561
BSOM/ BSM (GPS)	262	254	217	130	136	91	1090
BSBA (GPS)				14	85	82	181
Psychology Behavioral Health (GPS)					7	59	66
Master of Arts Teaching (MA)					23	35	58
MAED Curriculum & Instruction (MA)	63	52	61	80	42	49	347
MAOM Org Mgmt (MA)			1	7			8
OTE Org Training (MA)	1	17	18	8		3	47
HRDE Human Resource Development (MA)	24	18	17	21	31	21	132
MBA Master of Business Admin						33	33
Total GPS	491	434	416	345	392	445	2523
Grand Total	624	545	517	477	554	583	3300

Enrollment History

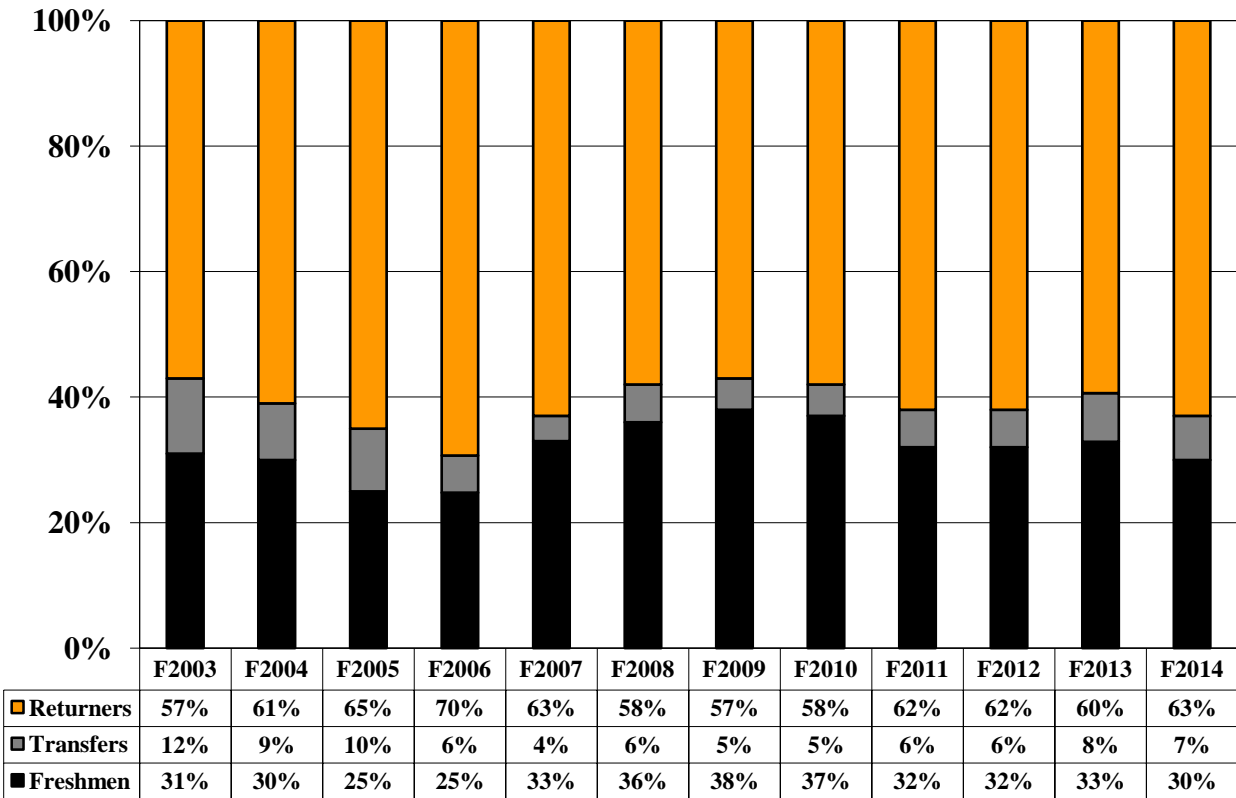
Ethnicity and Gender

Graduate & Professional Studies	2010-11	2011-12	2012-13	2013-14	2014-15
Total Enrollment	1319	1212	1255	1108	957
Percent Male	29.8	30.5	33.8	33.8	34.5
Percent Female	70.3	69.5	66.2	66.2	65.5
Percent Caucasian	90.3	89.5	89.3	92.8	86.9
Percent Black	5.6	5.8	5.7	5.0	4.4
Percent Other Minority and Unknown	4.1	4.7	5.0	2.2	8.7
Traditional College	2010-11	2011-12	2012-13	2013-14	2014-15
Total Enrollment	930	916	944	947	964
Percent Male	52.4	52.3	52.8	53.0	55.6
Percent Female	47.6	47.7	47.2	47.0	44.4
Percent Caucasian	73.8	71.2	69.3	74.2	65.5
Percent Black	18.3	19.8	22.0	17.7	18.7
Percent Other Minority and Unknown	4.7	5.7	5.3	4.4	11.8
Percent NR Alien (International)	3.2	3.3	3.4	3.7	4.0

Enrollment History

Freshmen, Transfers, Returning Students

Traditional College



2014-15 Geographical Distribution

Traditional College 37 States and 13 Foreign Countries

State	Female	Male	Total	Percent of Total Traditional Enrollment
Tennessee	292	252	544	56.4
Georgia	22	78	100	10.4
North Carolina	19	29	48	5.0
Virginia	17	23	40	4.1
South Carolina	6	32	38	3.9
Florida	3	26	29	3.0
Ohio	14	3	17	1.8
Kentucky	7	5	12	1.2
Alabama	7	4	11	1.1
New Jersey	6	4	10	1.0
Maryland	2	7	9	0.9
New York		9	9	0.9
Illinois	4	3	7	0.7
Louisiana	2	4	6	0.6
Michigan	3	2	5	0.5
Texas	2	3	5	0.5
Pennsylvania	2	2	4	0.4
California		3	3	0.3
Minnesota	1	2	3	0.3
Colorado	1	1	2	0.2
Indiana	1	1	2	0.2
Missouri	1	1	2	0.2
Nebraska		2	2	0.2
Wisconsin	2		2	0.2
Arizona	1		1	0.1
Connecticut	1		1	0.1
District of Columbia	1		1	0.1
Delaware		1	1	0.1
Iowa		1	1	0.1
Kansas		1	1	0.1
Maine		1	1	0.1
Mississippi		1	1	0.1
North Dakota		1	1	0.1
International Students	Female	Male	Total	Percent of Total Int'l Enrollment
Canada	6	6	12	29.3
Germany	2	5	7	17.1
Spain		5	5	12.2
Sri Lanka		3	3	7.3
United Kingdom	2	2	4	9.8
Denmark		2	2	4.9
Norway		2	2	4.9
Australia		1	1	2.4
Belgium		1	1	2.4
Brazil		1	1	2.4
Ghana		1	1	2.4
Netherlands Antilles		1	1	2.4
Portugal		1	1	2.4
Total	10	31	41	

2014-15 Geographical Distribution

Traditional College

58 Tennessee Counties

Tennessee County	Female	Male	Total	Percent of TN Students
Greene	86	61	147	27.1
Knox	26	21	47	8.7
Cocke	19	8	27	5.0
Hamblen	18	8	26	4.8
Shelby	11	14	25	4.6
Washington	16	8	24	4.4
Sevier	14	9	23	4.2
Hamilton	11	10	21	3.9
Hawkins	14	7	21	3.9
Sullivan	9	11	20	3.7
Davidson	4	11	15	2.8
Carter	6	3	9	1.7
Jefferson	6	3	9	1.7
Williamson	5	4	9	1.7
Bradley	1	7	8	1.5
Claiborne	6	2	8	1.5
Blount	4	3	7	1.3
McMinn	3	4	7	1.3
Rutherford	2	5	7	1.3
Anderson	1	5	6	1.1
Loudon	1	5	6	1.1
Campbell	2	2	4	0.7
Monroe		4	4	0.7
Montgomery	2	2	4	0.7
Warren		4	4	0.7
Wilson	1	3	4	0.7
Johnson	2	1	3	0.6
Lincoln	1	2	3	0.6
Roane		3	3	0.6
Sumner	2	1	3	0.6
White	2	1	3	0.6
Bedford	1	1	2	0.4
Cheatham		2	2	0.4
Coffee	1	1	2	0.4
Dickson		2	2	0.4
Giles	1	1	2	0.4
Grainger		2	2	0.4
Maury	1	1	2	0.4
Unicoi	1	1	2	0.4
Union	2		2	0.4
Athens	1		1	0.2
Broward	1		1	0.2
Carroll	1		1	0.2
Cumberland		1	1	0.2
Fayette		1	1	0.2
Franklin		1	1	0.2
Grundy	1		1	0.2
Hancock	1		1	0.2
Hardin		1	1	0.2
Henderson	1		1	0.2
Macon		1	1	0.2
Marshall	1		1	0.2
Meigs	1		1	0.2
Moore		1	1	0.2
Rhea		1	1	0.2
Robertson	1		1	0.2
Scott		1	1	0.2

Wayne		1	1	0.2
-------	--	---	---	-----

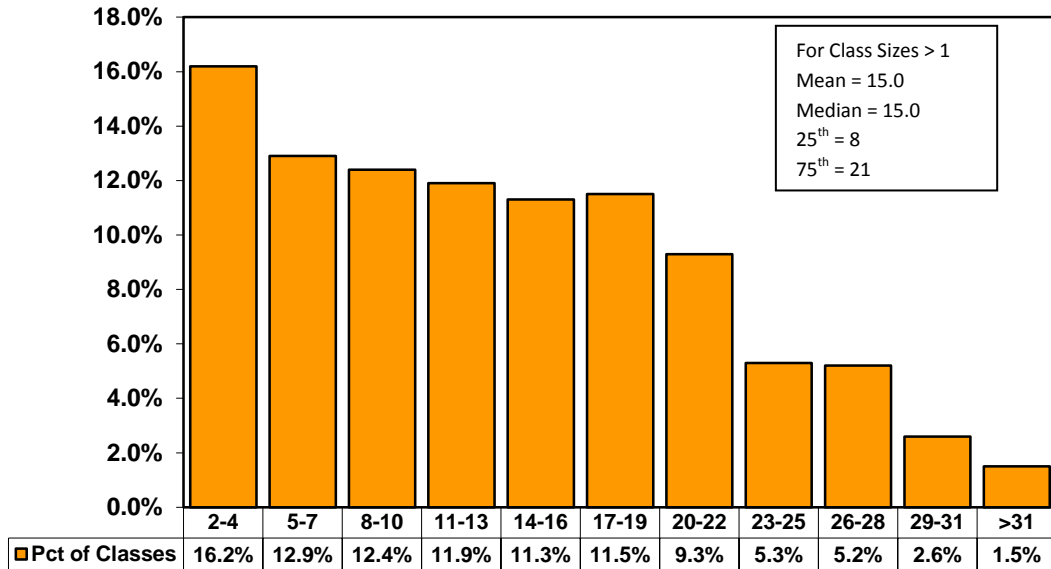
2014-15 Geographical Distribution

Graduate & Professional Studies – Tennessee Counties

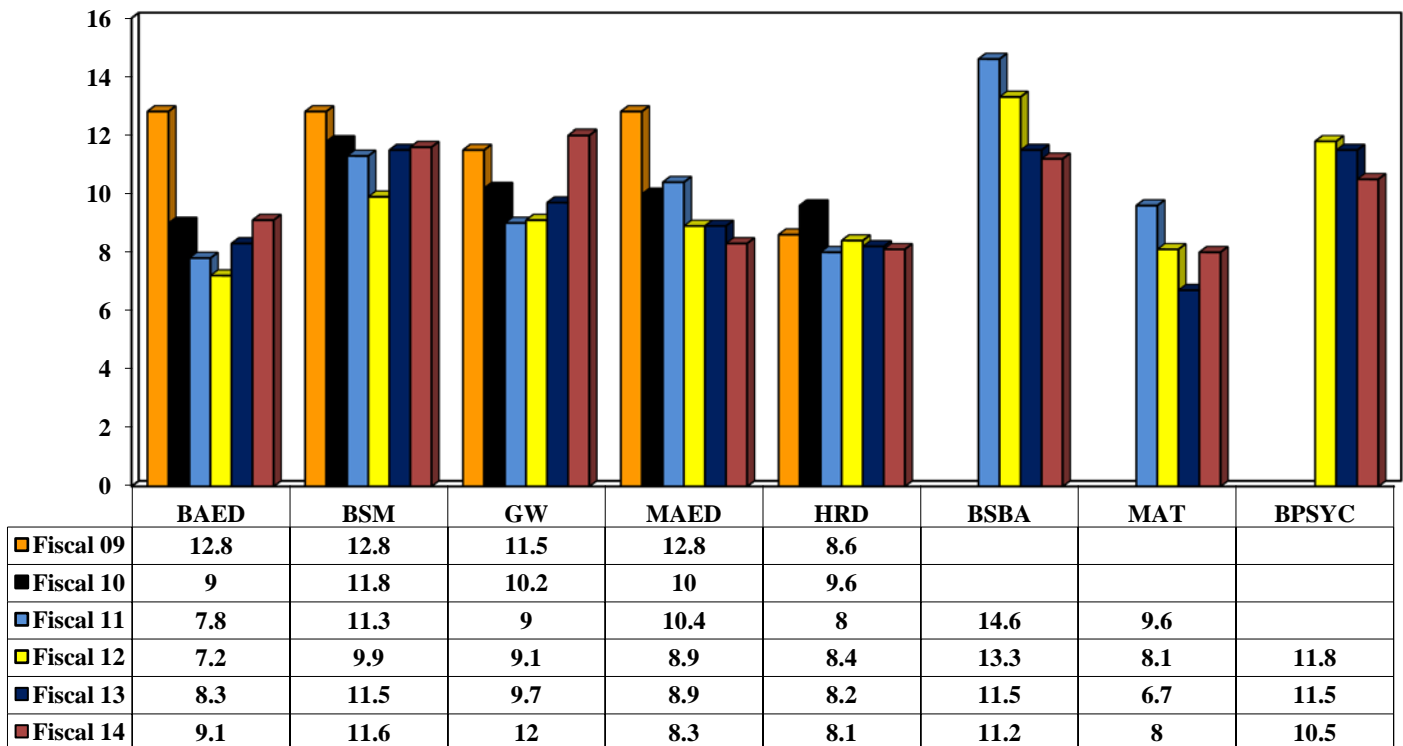
County	Female	Male	Total	Percent of TN Enrollment
Knox	180	99	279	29.5
Greene	103	54	157	16.6
Hamblen	68	25	93	9.8
Blount	31	37	68	7.2
Jefferson	38	15	53	5.6
Hawkins	29	9	38	4.0
Anderson	23	11	34	3.6
Sevier	20	7	27	2.9
Cocke	22	4	26	2.7
Loudon	17	8	25	2.6
Washington	17	8	25	2.6
Grainger	18	6	24	2.5
Roane	10	8	18	1.9
Sullivan	7	10	17	1.8
Campbell	9	4	13	1.4
Monroe	6	5	11	1.2
Hancock	6	1	7	0.7
Claiborne	5		5	0.5
Scott	3	2	5	0.5
Morgan	3	1	4	0.4
Union	2	2	4	0.4
McMinn	2	1	3	0.3
Unicoi	2	1	3	0.3
Cumberland		2	2	0.2
Hamilton	1	1	2	0.2
Meigs	2		2	0.2
Carter	1		1	0.1
Grand Total	625	321	946	

Class Sizes 2013-14

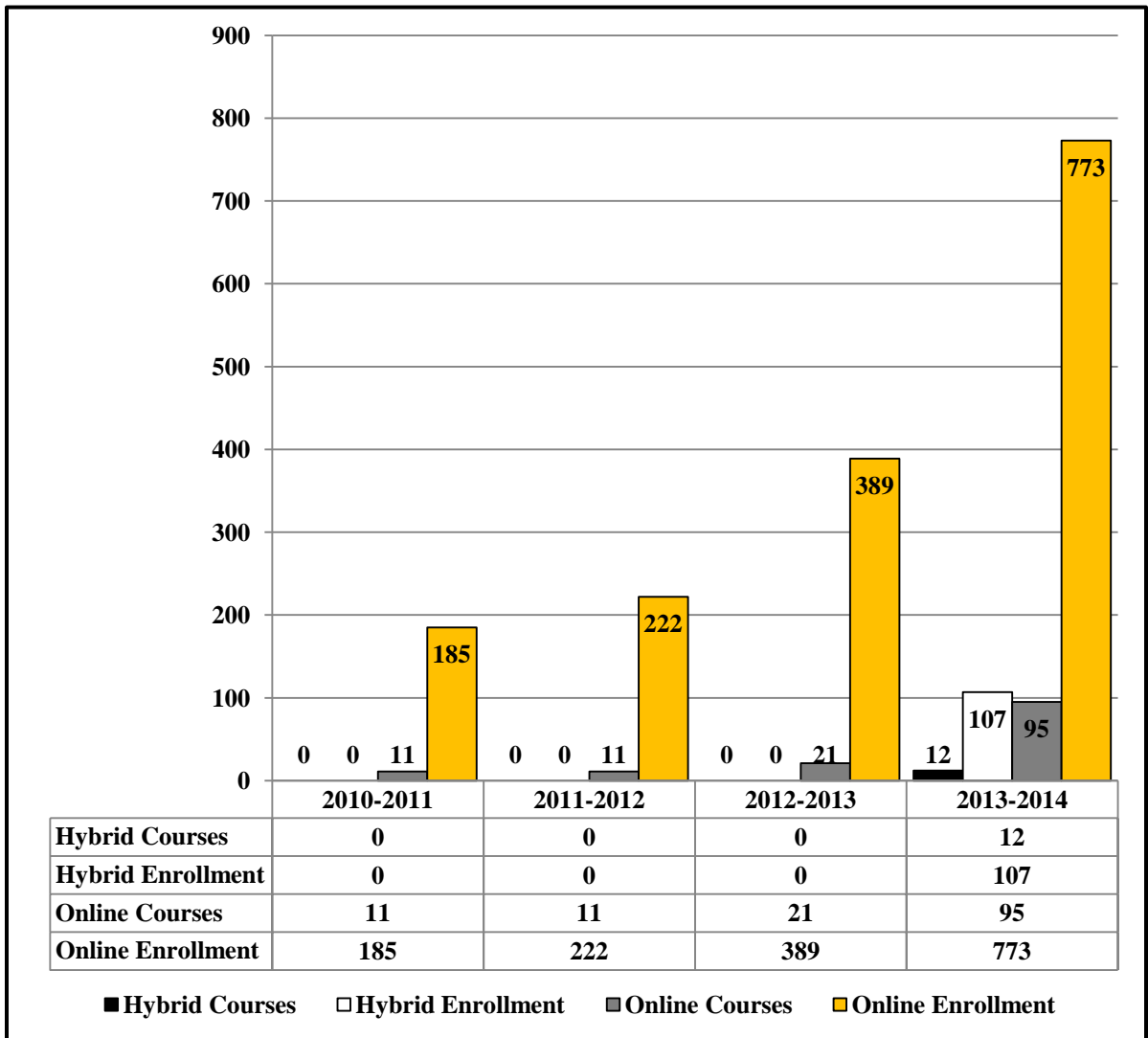
Traditional College



Graduate and Professional Studies Average Class Size (Class Size >2)

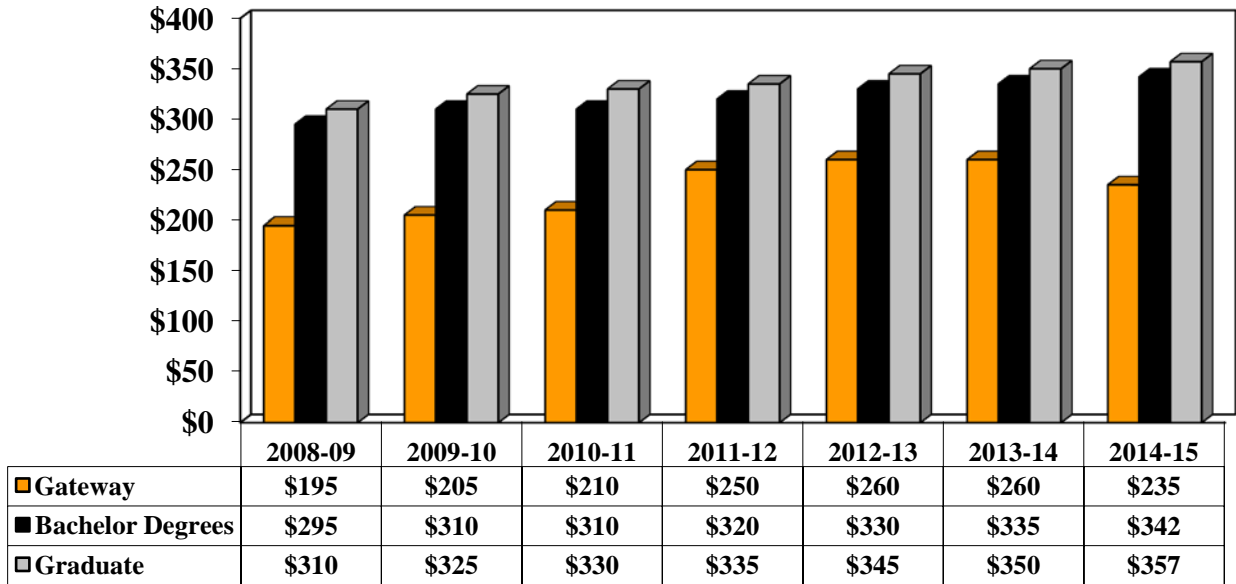


Hybrid-Online Enrollment

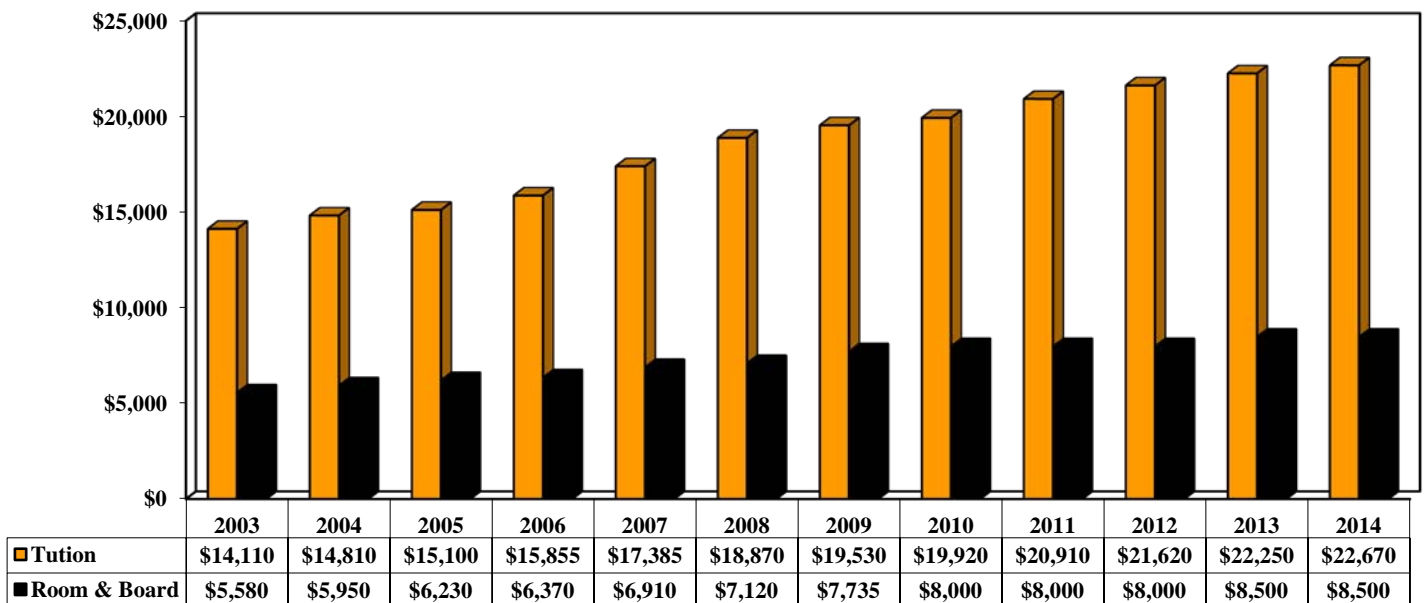


Tuition

Graduate & Professional Studies Cost per Semester Hour

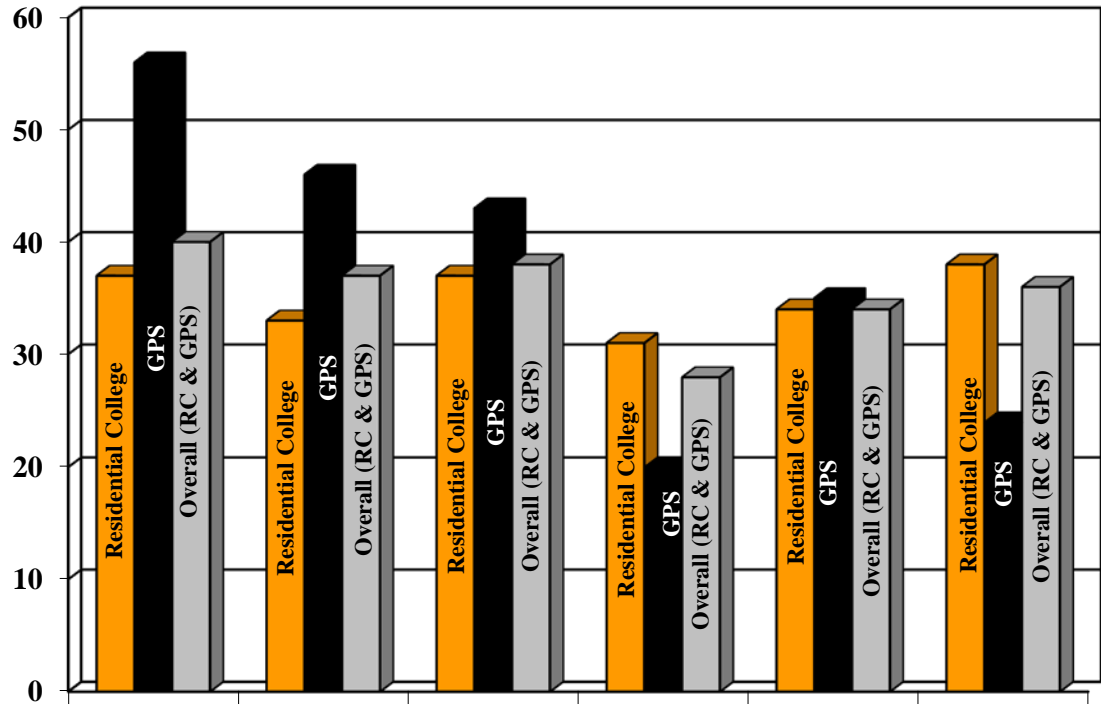


Traditional College Tuition, Room & Board



6-Year Graduation Rates

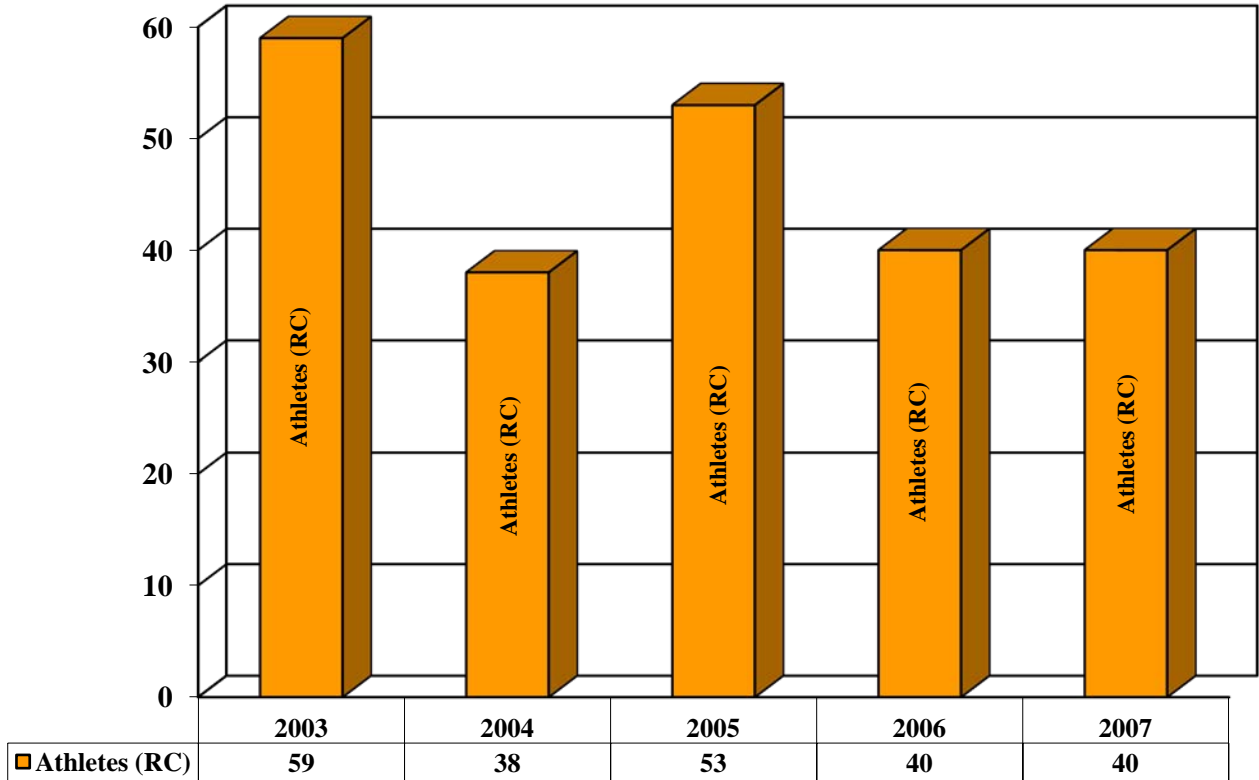
Cohort Graduation Rates (IPEDS) (Percent of Cohort Graduated)



	2003	2004	2005	2006	2007	2008
■ Residential College	37	33	37	31	34	38
■ GPS	56	46	43	20	35	24
■ Overall (RC & GPS)	40	37	38	28	34	36

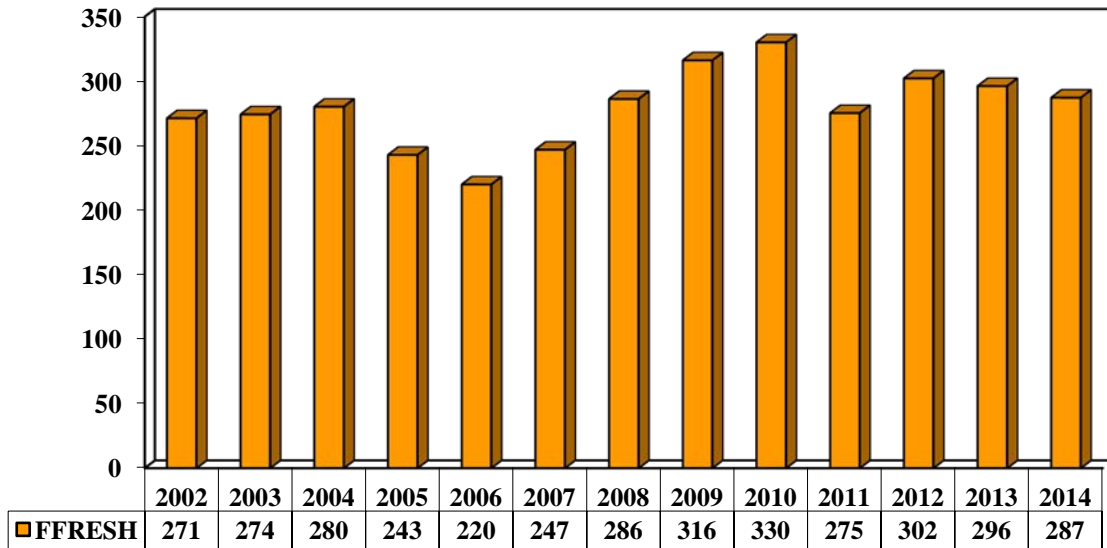
6-Year Graduation Rates

Athlete Cohort Graduation Rates (Percent of Cohort Graduated)



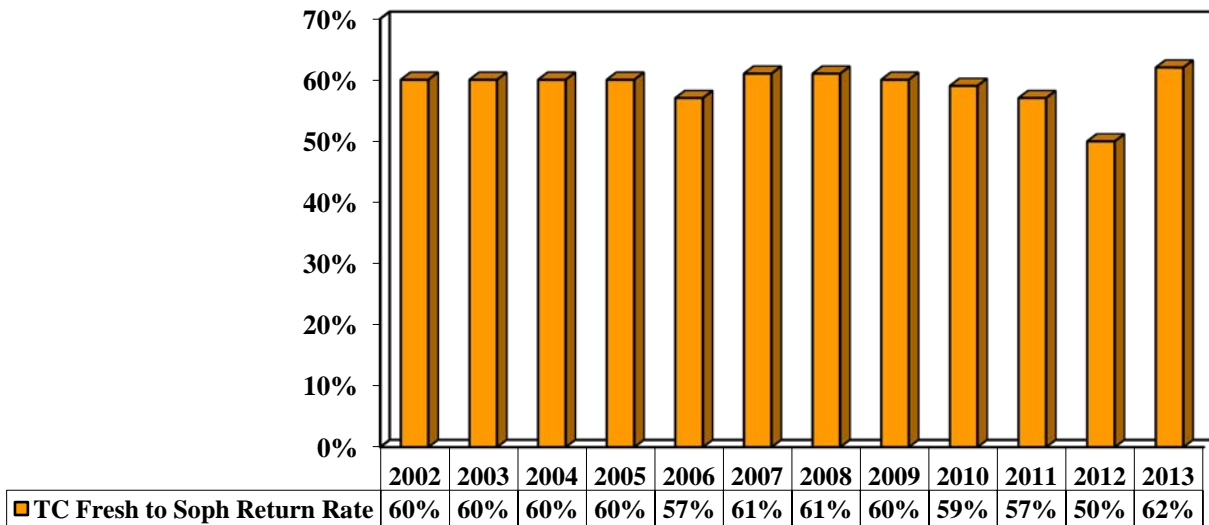
Freshman Rates

Traditional College Fall First-Time Freshmen by Cohort Year*



*First-time Freshman defines the student who has never attended another college prior to attending Tusculum College.

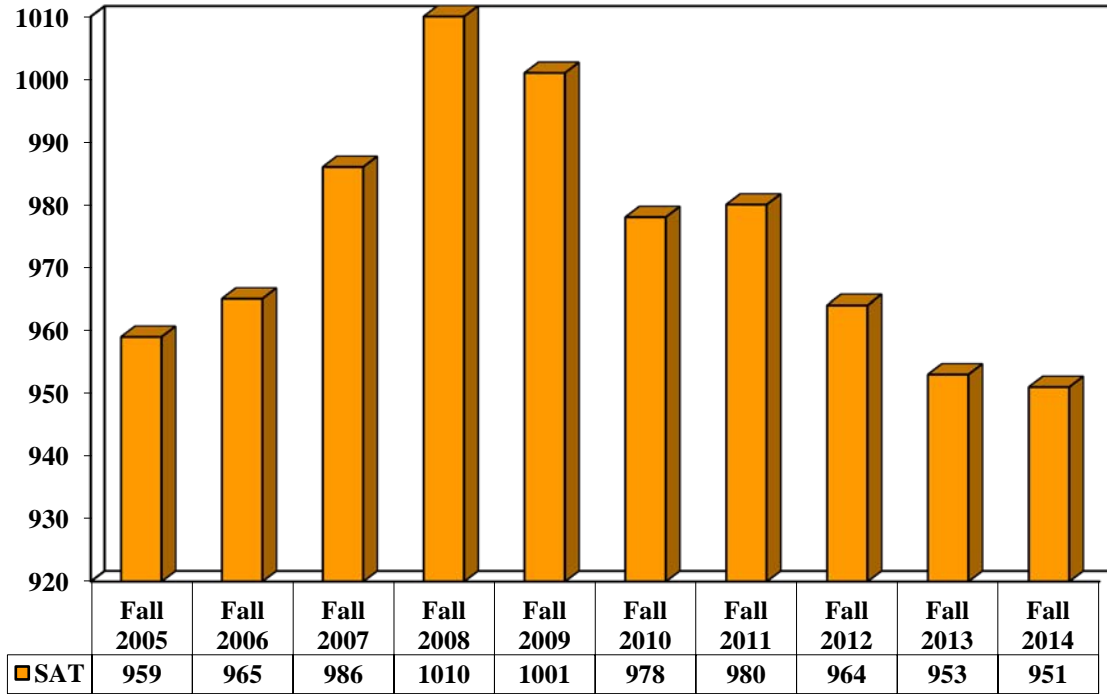
Cohort Return Rate x Cohort Year Fall Freshmen Returning For Sophomore Year**



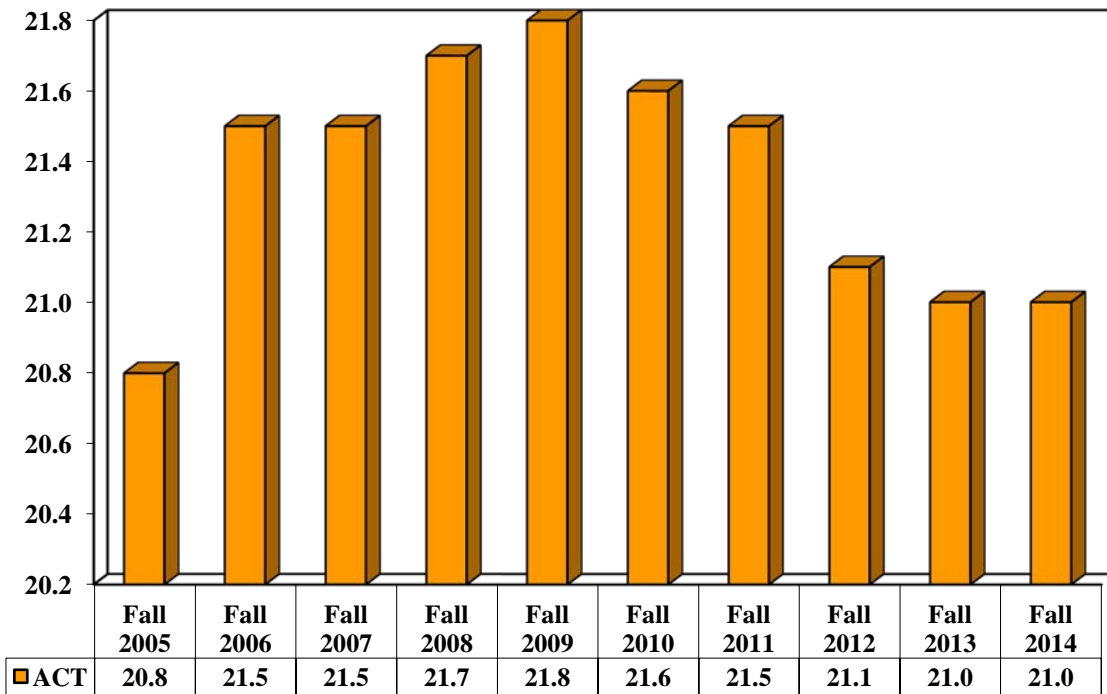
**Combined GPS and Traditional College First-time Full-time Freshman cohort, as reported to IPEDS.

SAT / ACT Trends of Traditional College Entering Class

SAT Trends



ACT Trends



Tusculum College Programs of Study 2014-15

Bachelor of Arts Majors (and Concentrations)

Art & Design	Chemistry	Nursing
a. Graphic Design	Criminal Justice	Physical Education
b. Studio Art	English	Political Science
c. Digital Media	a. Creative Writing	Psychology
Athletic Training	b. Journalism and Professional Writing	a. Behavioral Health (GPS)
a. Pre-Physical Therapy	c. Literature	b. Applied
Biology	Environmental Science	c. Experimental
a. Medical Pre-Professional	a. Environmental Health	Sport Management
b. Pre-Pharmacy	Field Guide/Naturalist	Sports Science
c. Medical Technology	History	
Business Administration	a. Public History	
a. Economics and International Business	Human Growth and Learning	
b. General Management	Mathematics	
c. Information Technology	a. Math/Computer Science	
d. Management Accounting	Museum Studies	

Tusculum College offers four categories of teacher licensure programs:

1. Pre-Secondary Education

Early Childhood Education PreK-3
Elementary Education K-6
Middle Grades Education 4-8

2. K-12 Education

Physical Education K-12
Visual Arts K-12

3. Special Education

Special Education Early Childhood Pre K-3
Special Education Modified and
Comprehensive K-12

4. Secondary Education

Biology 7-12
Business 7-12
English 7-12
Government 7-12
History 7-12
Mathematics 7-12
Psychology 9-12

Minors

Biology, Chemistry, Civic Engagement, Coaching, Computer Science, Creative Writing, Economics, Environmental Science, History, International Business, Journalism, Literature, Management, Mathematics, Museum Studies, Political Science, Pre-Law, Psychology, Religious Studies, Theatre, Visual Arts and the following minors in Education: English, History, Early Childhood Education, Elementary Education, Human Growth and Learning – Early Childhood Education – Pre K 4 or Pre K 3, Human Growth and Learning – Early Education, K – 6, Mathematics, and Special Education Modified & Comprehensive. Special Education Early Child

Other Disciplines

Tusculum College also offers additional courses in the following disciplines: Geography, Geology, Humanities, Music, Physics, Sociology, Spanish, and Natural Sciences

Graduate and Professional Studies Programs for Adult Students

Bachelor of Science in Management

Bachelor of Science in Business Administration

(Add-On Concentrations available for the Bachelor of Science in Management and in Business Administration are Applied Information Technology, Financial Management, Human Resource Management and Marketing)

Bachelor of Arts in Education/Human Growth and Learning – K-6

Bachelor of Arts Psychology (Behavioral Health)

Bachelor of Arts Criminal Justice

Master of Arts in Education: Curriculum and Instruction, & Human Resource Development

Master of Arts in Teaching

Master in Business Administration